

# Massachusetts School Building Authority

Deborah B. Goldberg, State Treasurer and Receiver-General

James MacDonald

*Chief Executive Officer*

*Chairperson*

John K. McCarthy

*Executive Director*

## Commissioning Roundtable Closeout: Challenges & Successes



# Construction Phase

- Training
- O&M Documentation Review
- T&M Support, Year 1
- Punchlist Completion Review
- CIL Update





# Closeout Phase

- Final Report
  - Project Info
  - OPR Compliance
  - CIL
  - Recommendations
  - CxA Documentation
  - CM/GC Documentation







# Post-Occupancy

- Seasonal/Deferred Testing
- 10-Month Review
- Cx Certificate of Completion



# Massachusetts School Building Authority

Deborah B. Goldberg, State Treasurer and Receiver-General

James MacDonald

*Chief Executive Officer*

*Chairperson*

John K. McCarthy

*Executive Director*

## Commissioning Roundtable Building Envelope Commissioning



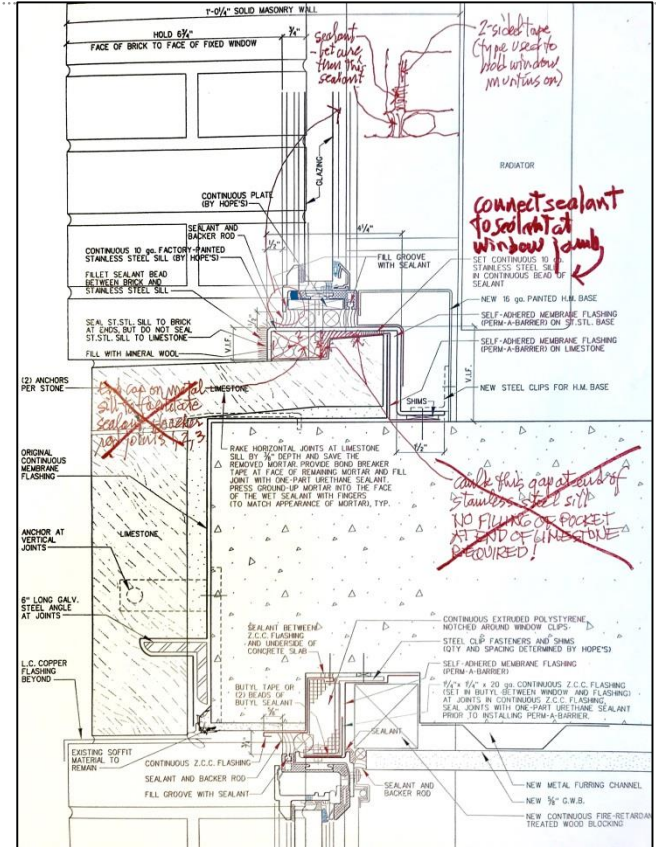
# Outline of Peer Review Discussion

---

- How are comments on drawings provided?
- Is a review after designer's 60% submission needed?
- What do Cx Agents do when comments are not incorporated?
- Peer review of submittals
- Other topics; general discussion

# How are comments on designer's drawings provided?

- As mark-ups on drawings, or
- As written comments describing the condition (how are comments like those at right described?), or
- As both?





# Is a review after designer's 60% submission needed?

---

- Are comments from 35% usually incorporated?
- Are documents usually complete enough?





# What should Cx Agents do when comments are not incorporated by the designer?

---

- Due to disagreement with comments?
- Due to lack of attention?



## Peer review of contractor submittals

---

- Done in series or parallel with the designer?
- If in parallel, how are substitutions handled?
- Done as email comments when possible?
- No comment by just not acting?



# Construction Observations and Field Performance Verification Testing

---

- Frequency
- Test type and appropriateness
- What happens when there are leaks?
- Process of signing off on modifications
- Tracking through completion and signing off on results (even if leakage still present?)



# Questions and Discussion





## *Contact Information:*

Rachel O'Brien

[Rachel.Obrien@MassSchoolBuildings.org](mailto:Rachel.Obrien@MassSchoolBuildings.org)

617-720-4466