

# Massachusetts School Building Authority

Deborah B. Goldberg, State Treasurer and Receiver-General

*Chairperson*

James MacDonald

*Chief Executive Officer*

Jack McCarthy

*Executive Director*



## Meet the FAS Members

Joint OPM and Designer Roundtable

October 17, 2019



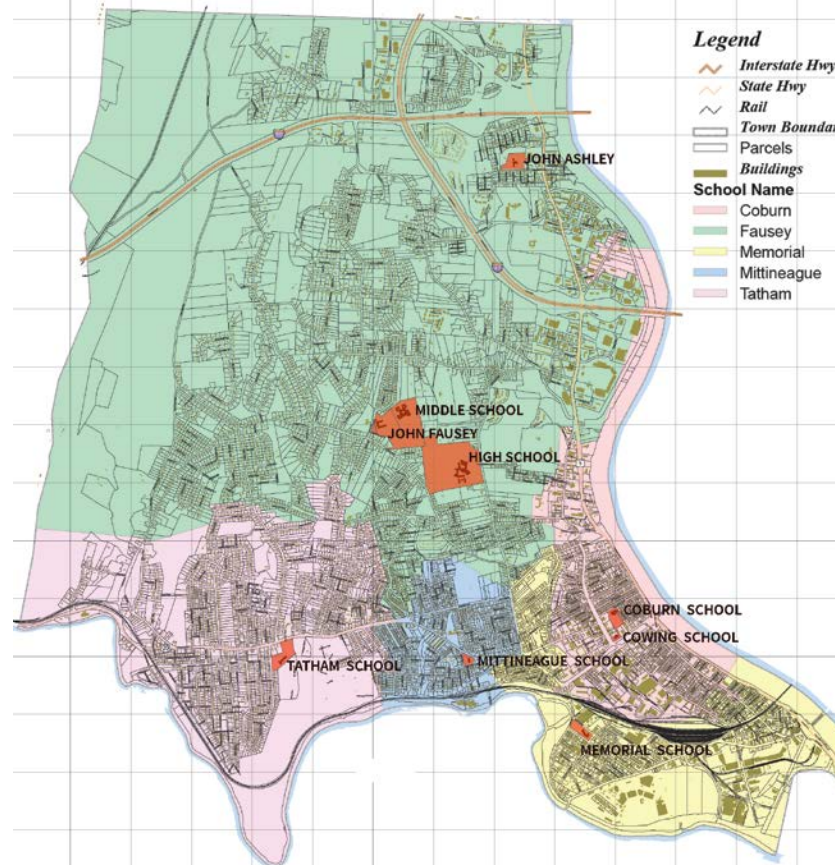
# Terry Kwan

---

Community Context and Project Goals



# Community Context and Project Goals

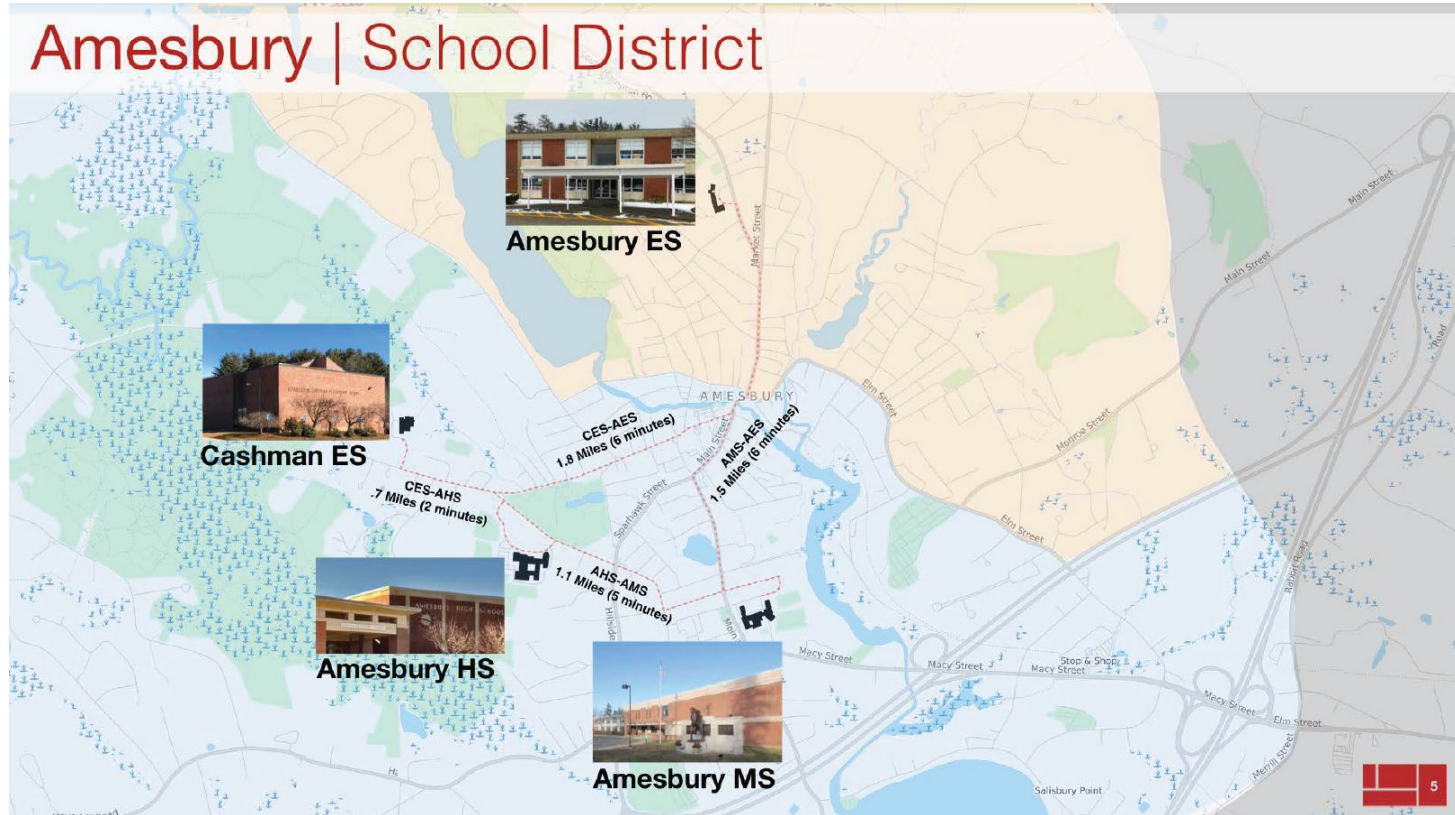


West Springfield:  
Coburn Elementary School



# Community Context and Project Goals

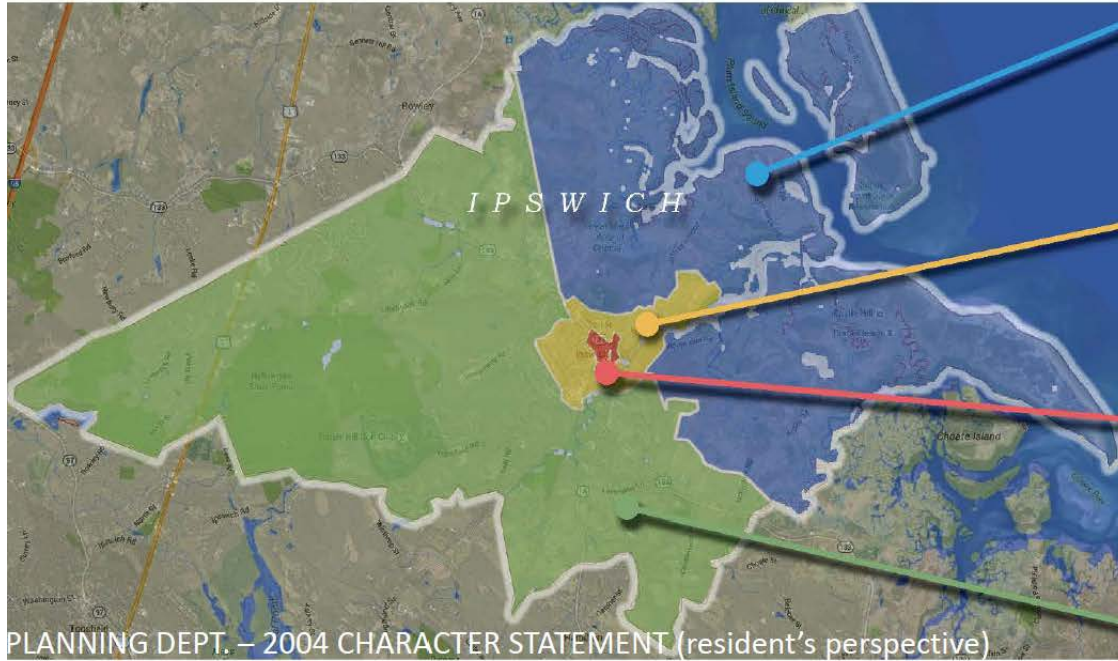
## Amesbury | School District







# Community Context and Project Goals







# Anne Brockelman, AIA

---

How Does the Design Support the Educational Plan?



# Design of Your School



Studio G / Match Charter Public School



SMMA / Ayer Shirley Regional High School





# Design of Your School



## Building & Site Design

- Site Context & Constraints
- Program & Building Organization
- Interior Spatial Relationships
- Indoor-Outdoor Connection / Outdoor Learning
- Scale: Building Exterior
- Scale: Site Context
  
- Sustainability & Resilient Design
- Public / Community
- The Educational Plan



# Understanding Site Context



Leicester: Leicester Middle School





# Site Constraints



Gardner: Waterford Elementary School



# Site Context - Suburban

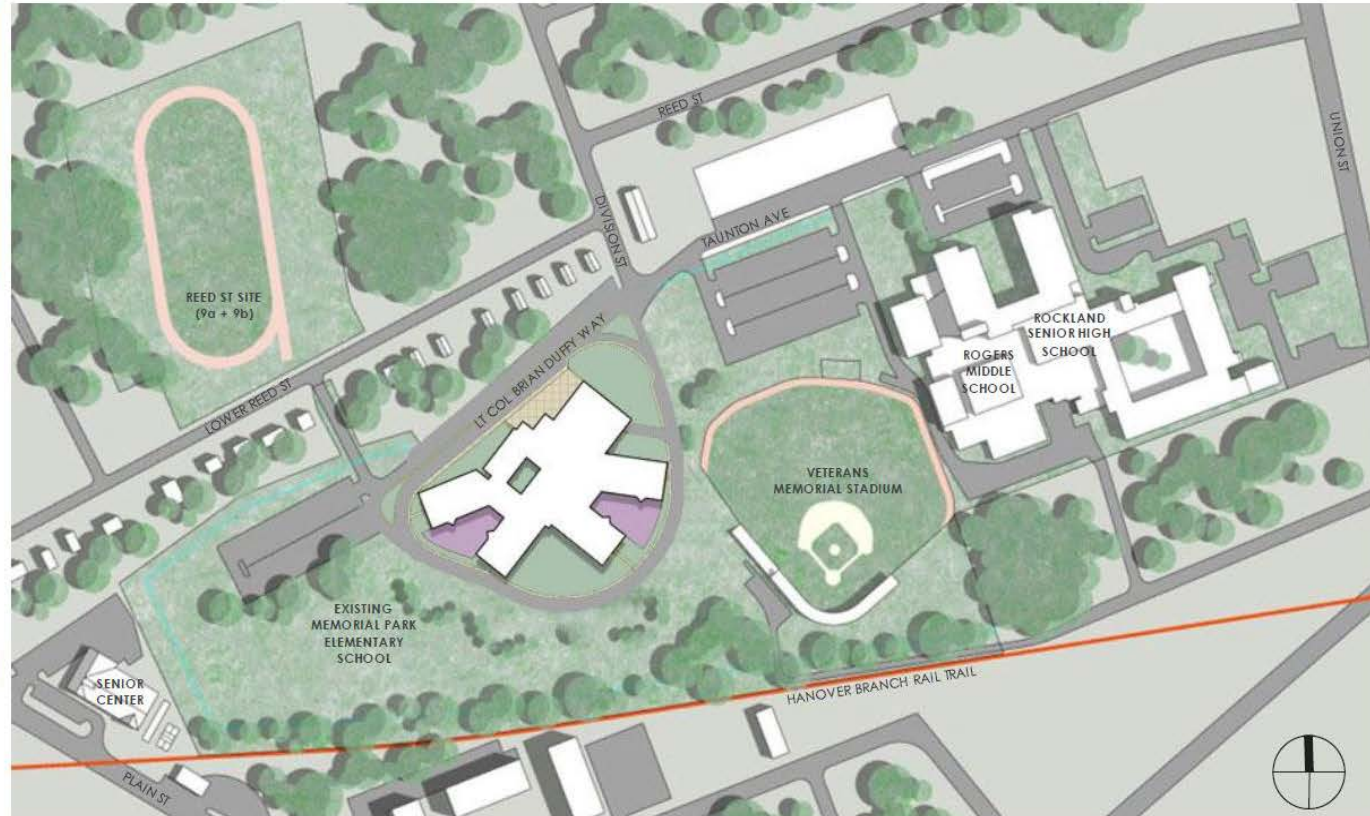
## Preferred Solution:

### Memorial Park

760 Students Grades 1-4

#### Site Features

- 18.1 Acres areas of impact (7.5 Acres to School Dept.)
- Centrally Located
- Grade 1 – 12 Campus
- Relatively Flat site
- Hanover Branch Rail Trail along Southern property line







# Site Context - Urban

## LEGEND

- SCHOOLS
- RESIDENTIAL
- COMMERCIAL
- CHURCH
- CEMETERY
- LIBRARY



Third Floor



Second Floor



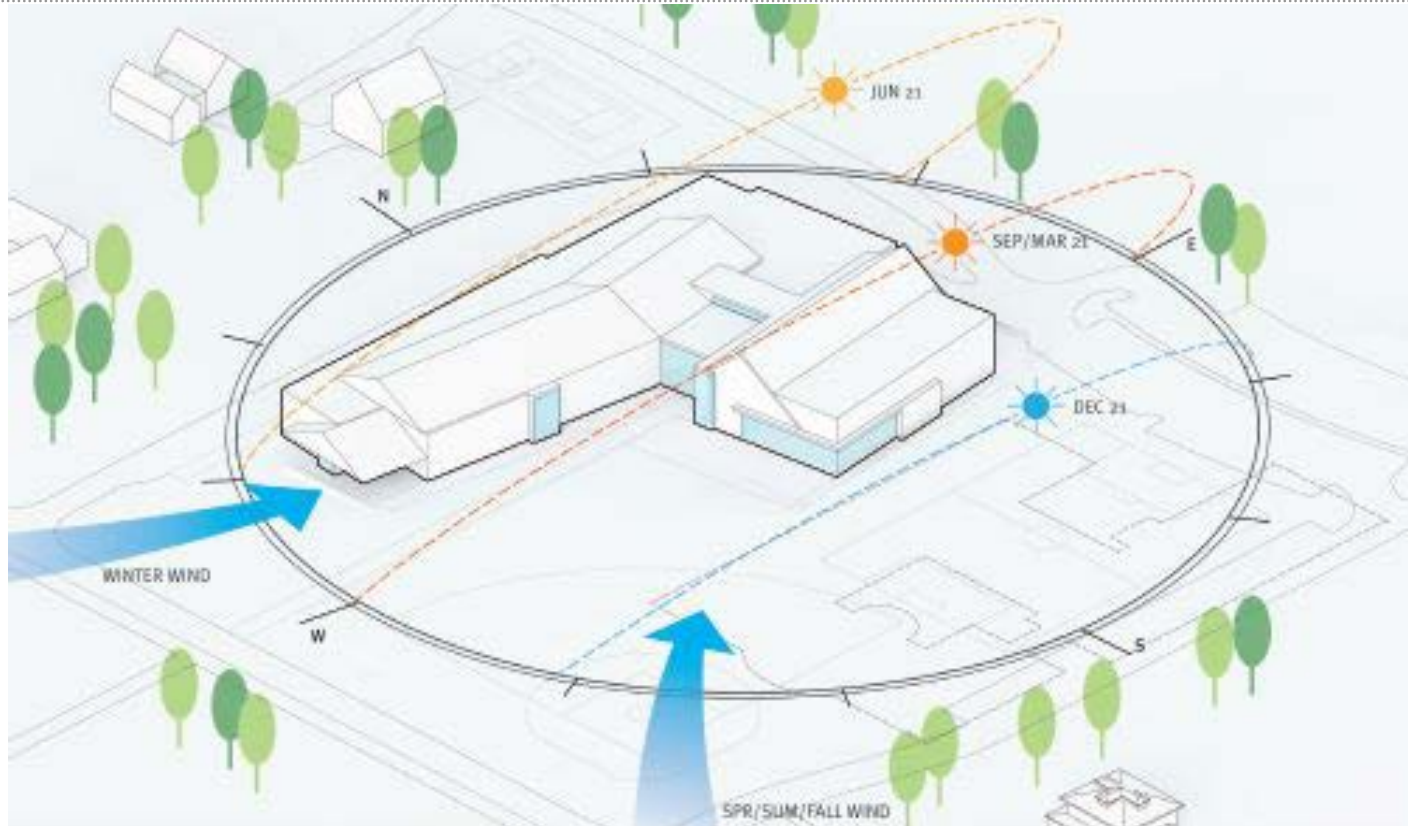
First Floor

West Springfield: Coburn Elementary School



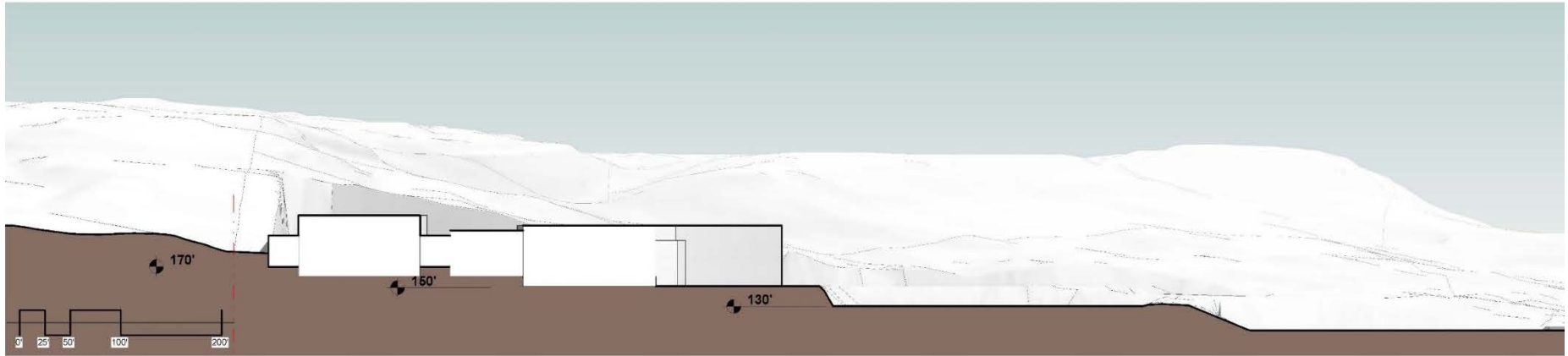


# Solar Orientation





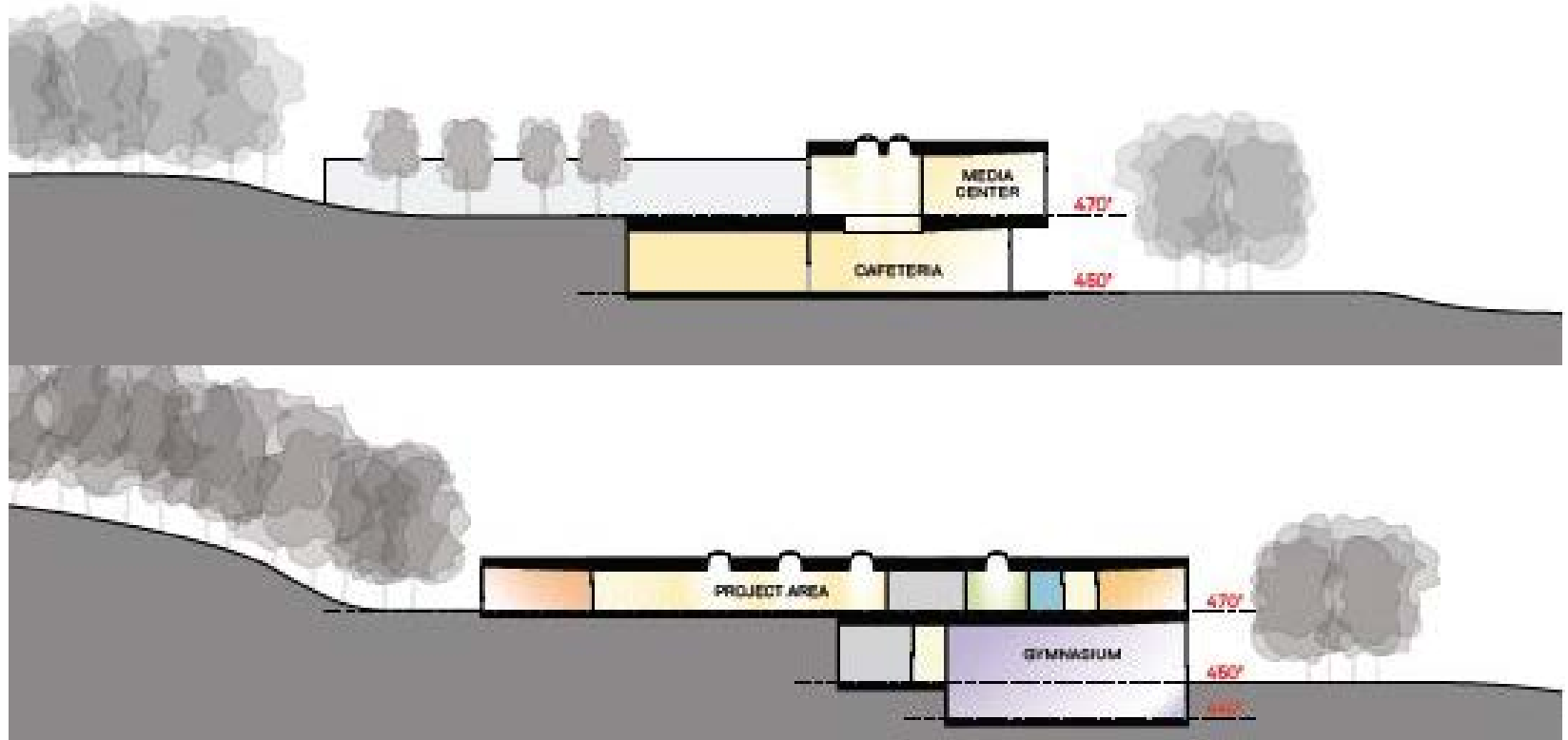
# Negotiating a Sloped Site



1 SITING OPTION - EAST WEST SECTION  
SCALE: 1" = 50'-0"

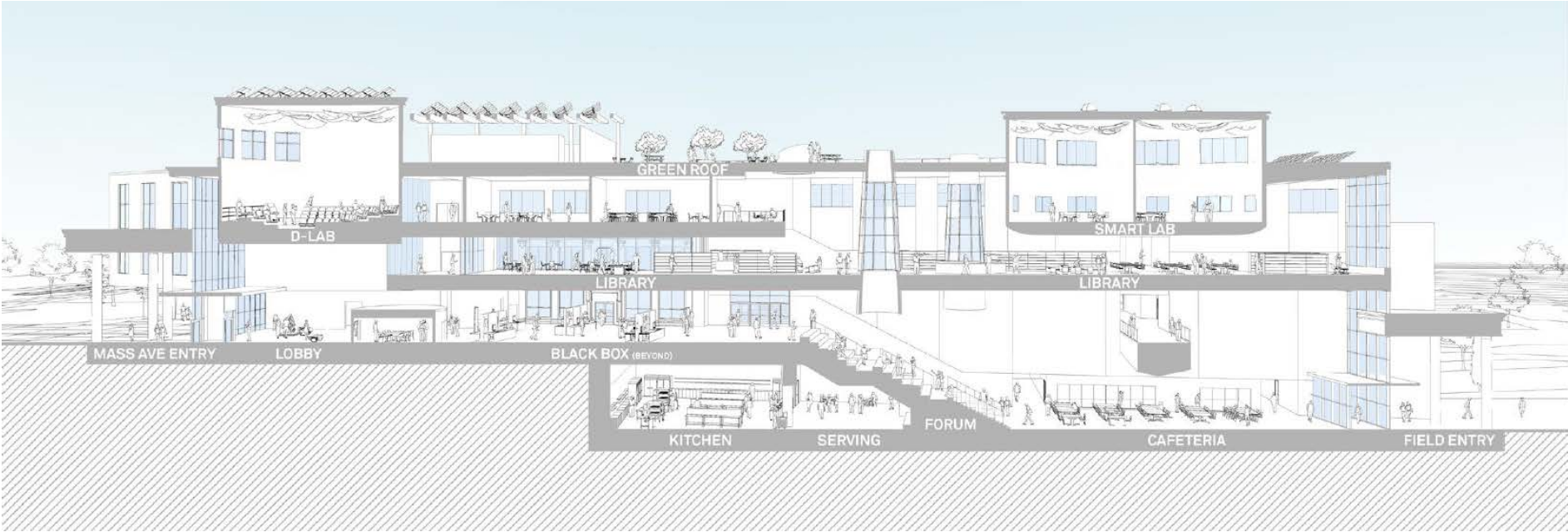


# Negotiating a Sloped Site





# Negotiating a Sloped Site



Arlington: Arlington High School



# Addition / Renovation

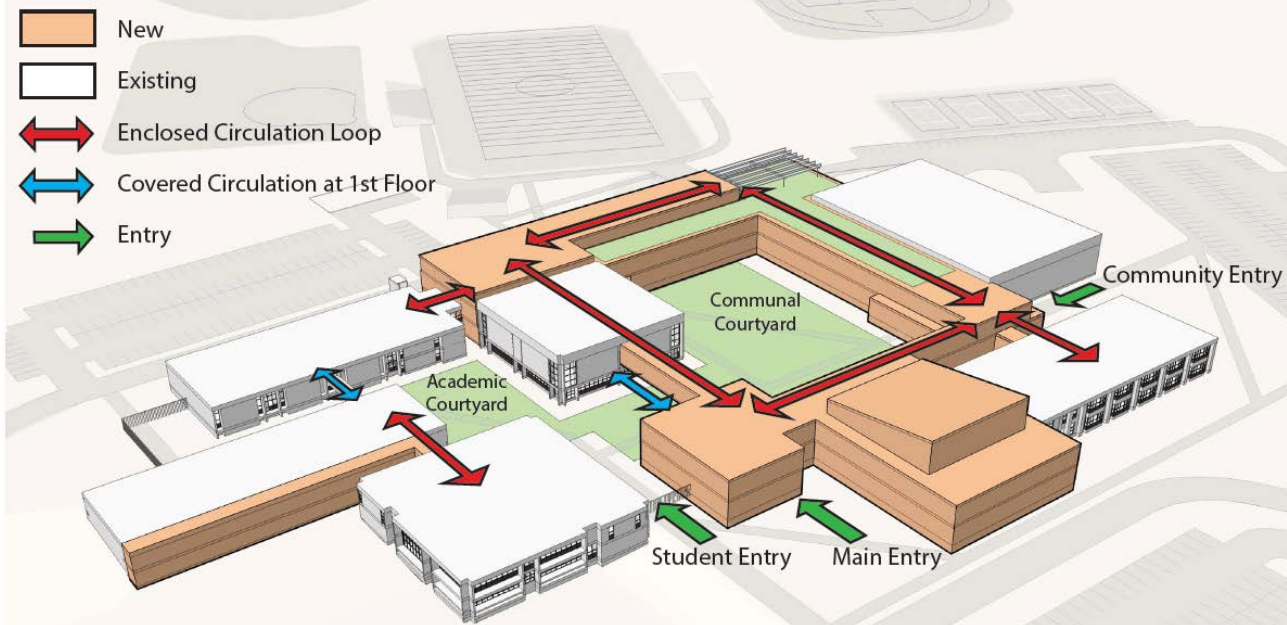


Nauset: Nauset Regional High School





# Addition / Renovation

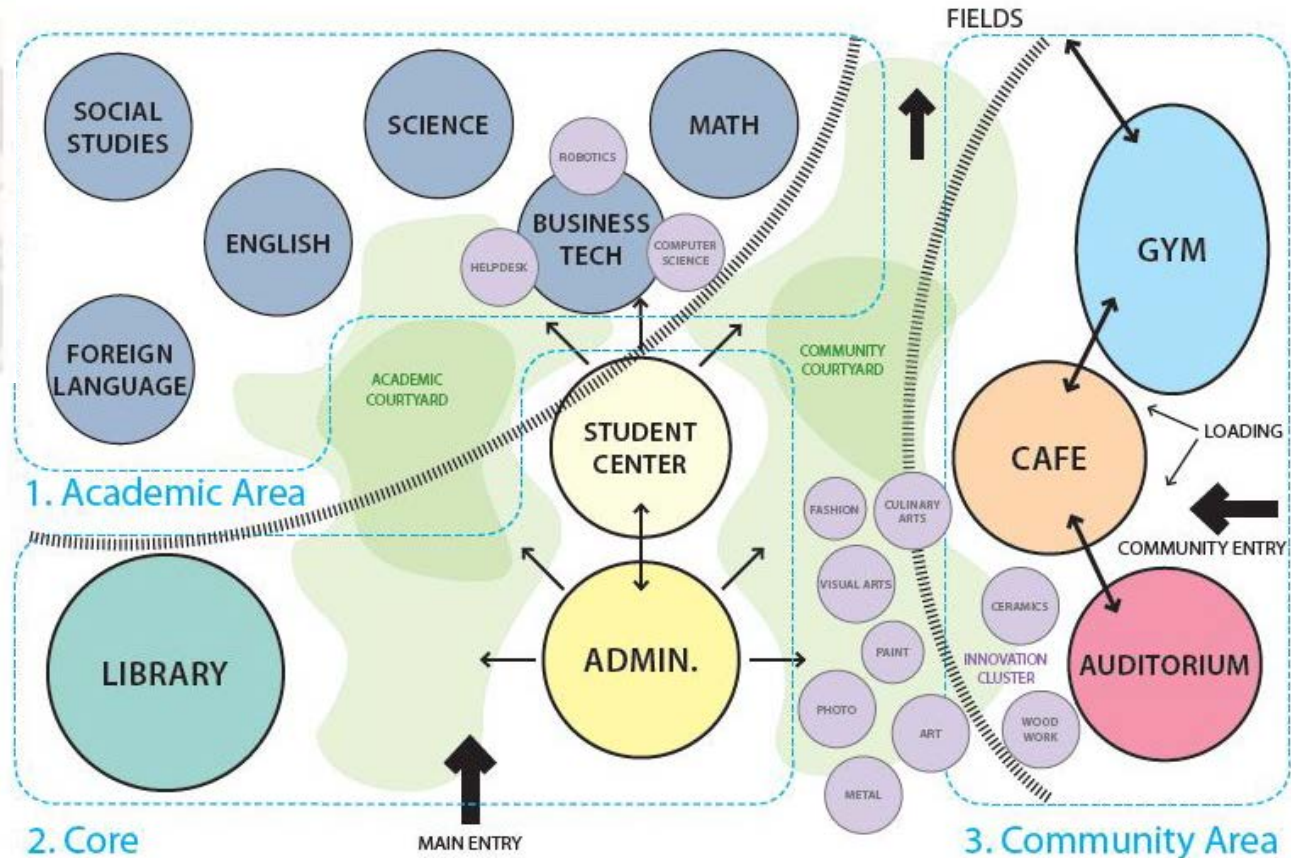


## Benefits

- Enclosed loop circulation
- Activates courtyards with visible program and a mix of uses
- Expanded courtyards for academic / community use



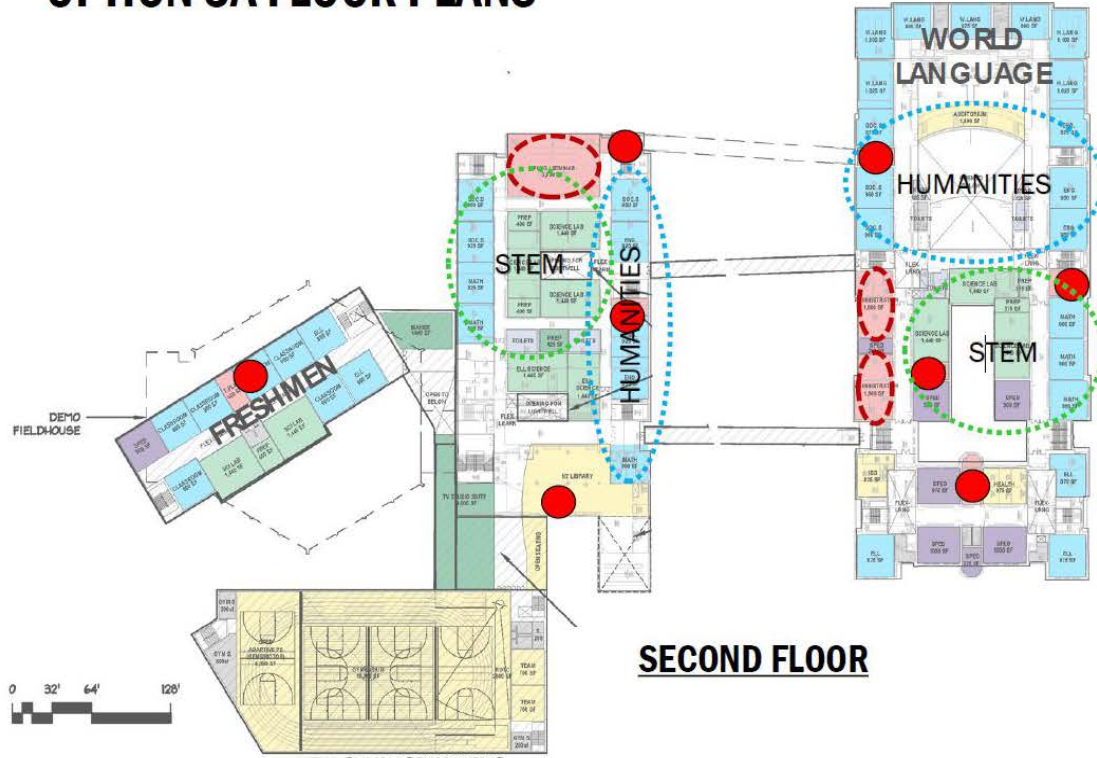
# Conceptual Program Organization



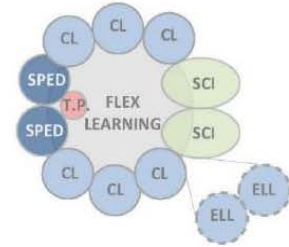


# Conceptual Program Organization

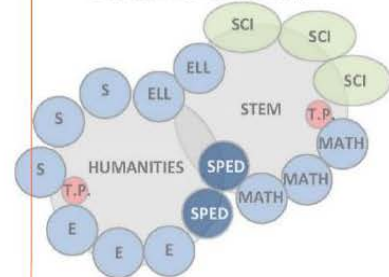
## OPTION 3A FLOOR PLANS



### FRESHMAN TEAM

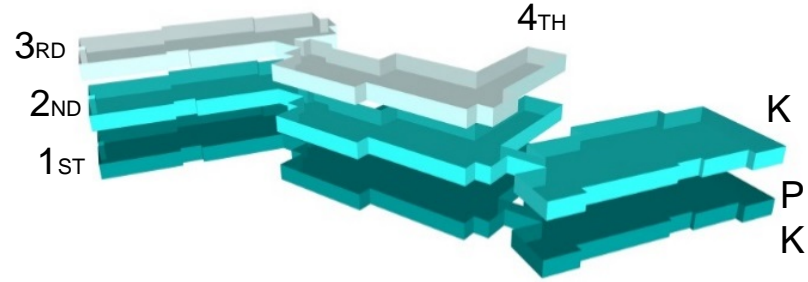
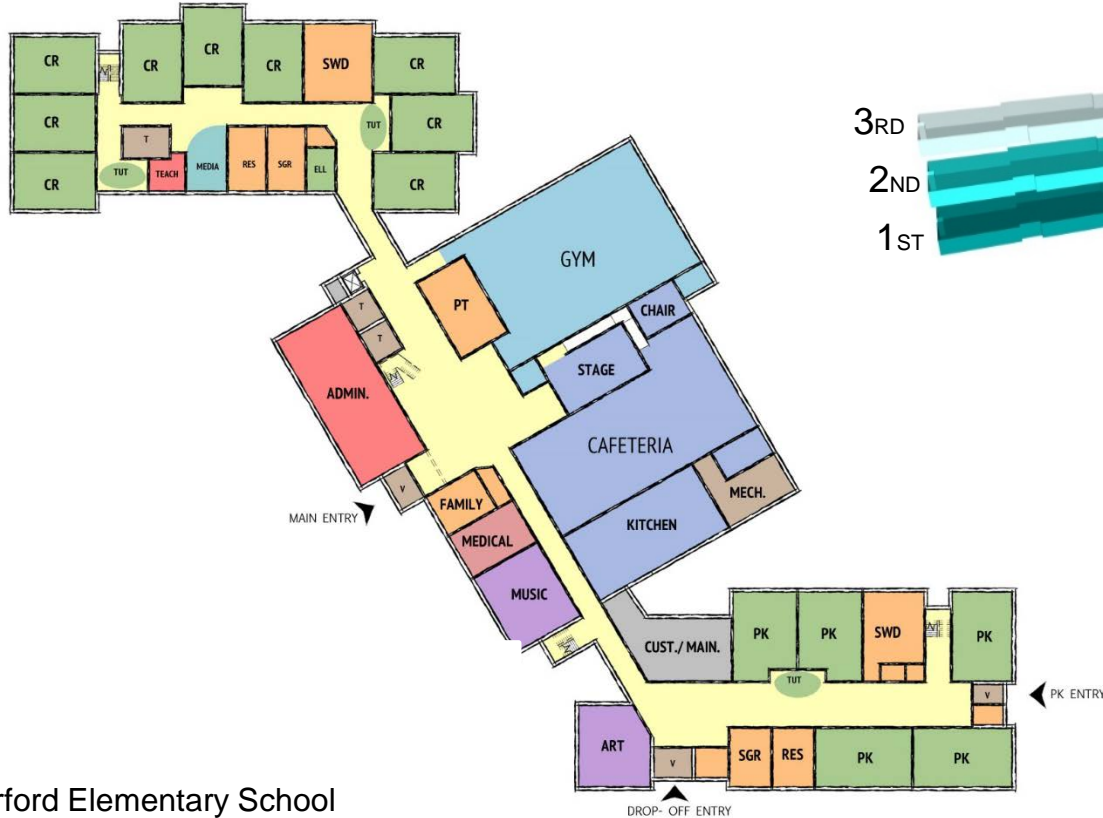


### GRADE 10-12 TEAM





# Relationship of Program; Parts & Volume







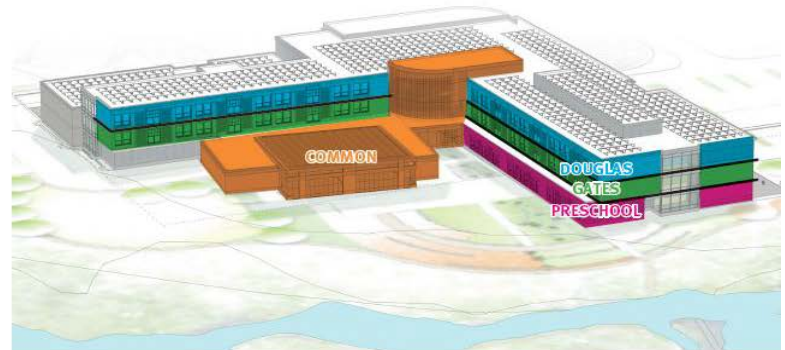
# Relationship of Program; Parts & Volume



PROGRAM STACKED VERTICALLY



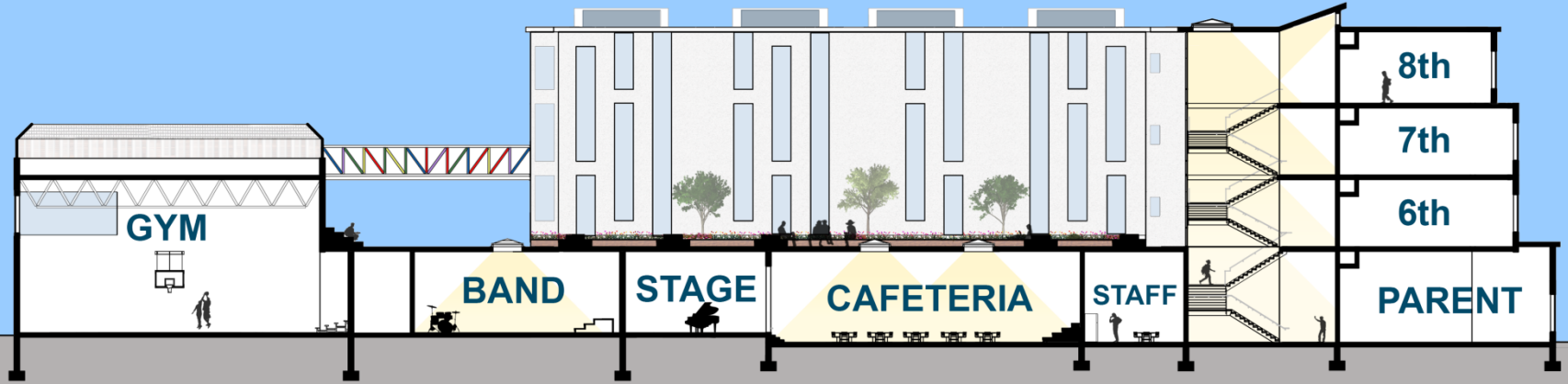
SCHOOLS BY FLOOR





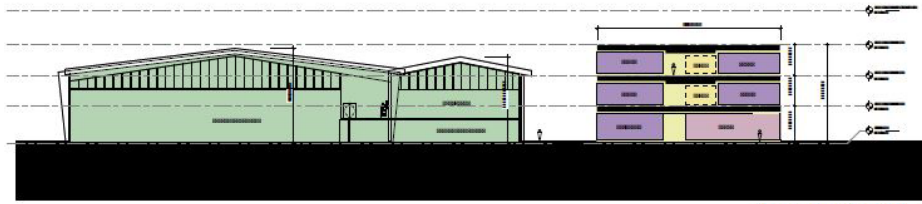
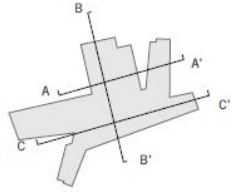


# Relationship of Program; Parts & Volume

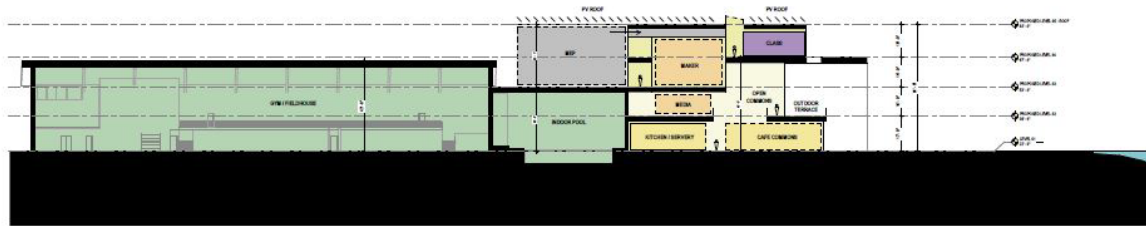




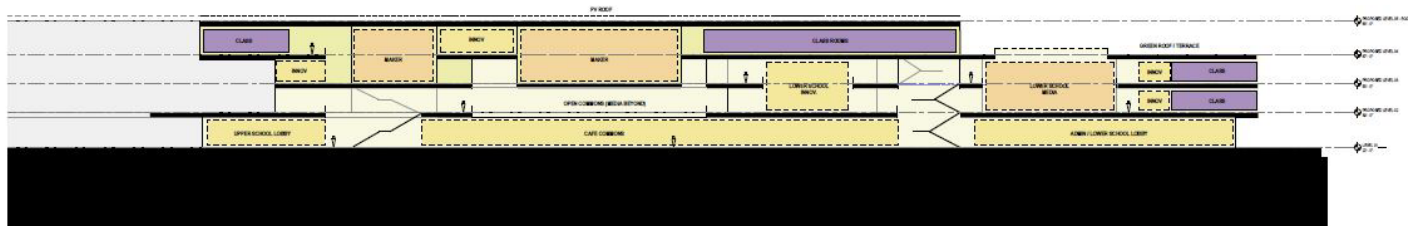
# Relationship of Program; Parts & Volume



NEW SECTION A-A'



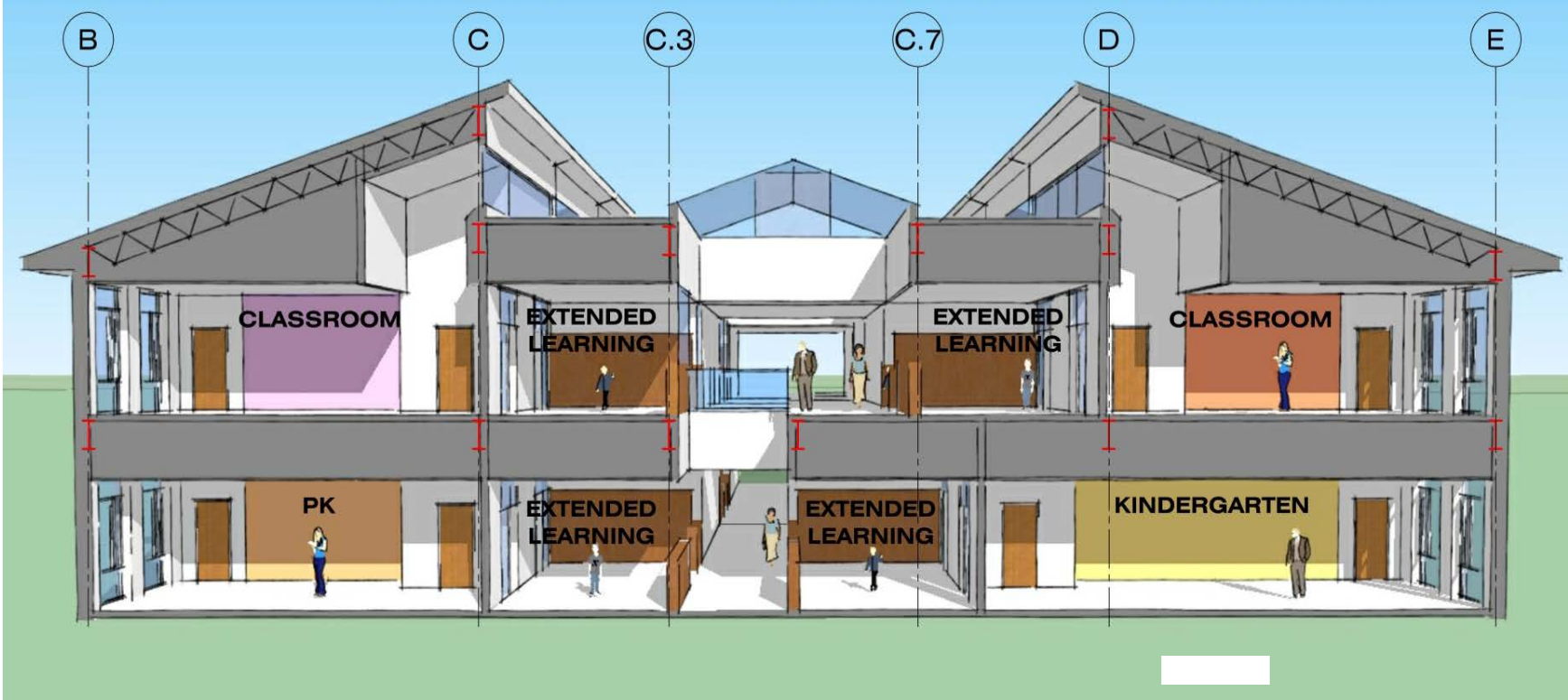
NEW SECTION B-B'



NEW SECTION C-C'



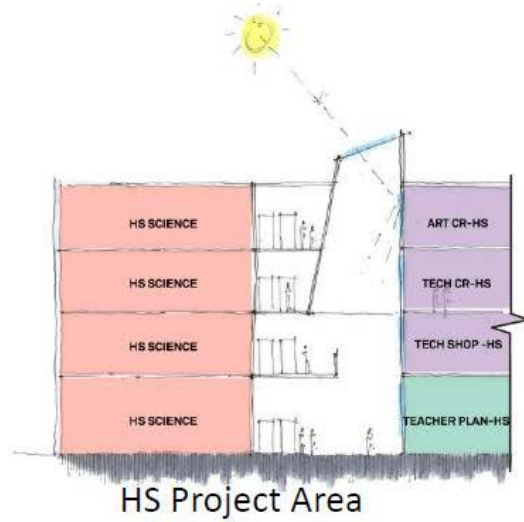
# Interior Spatial Relationships



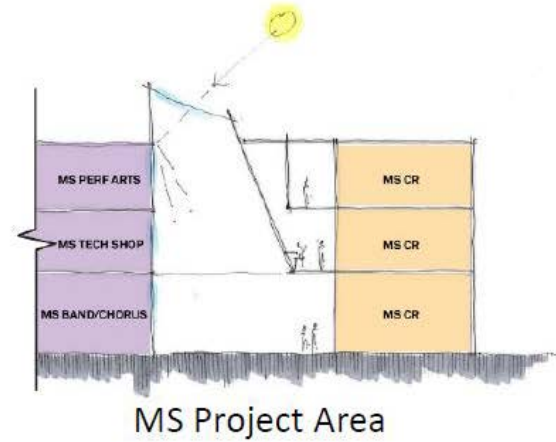
Marblehead: Elbridge Gerry Elementary School



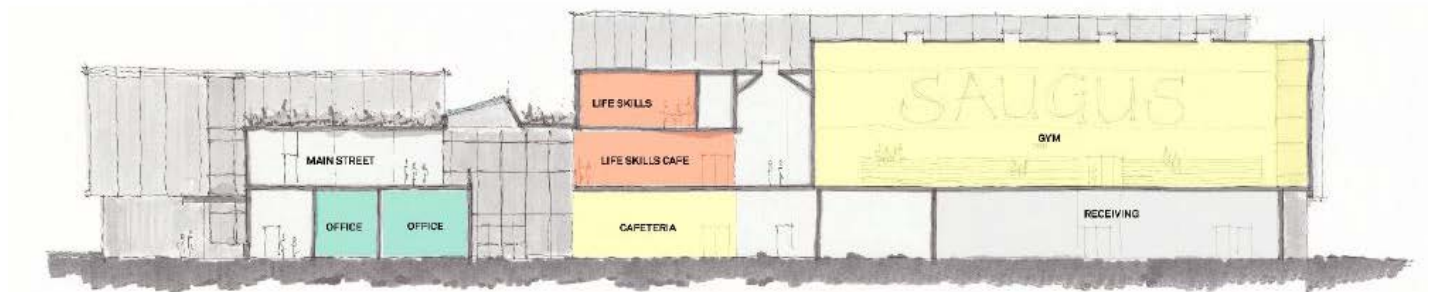
# Interior Spatial Relationships



HS Project Area



MS Project Area



Main Street Section



# Interior Spatial Relationships



Weymouth: Maria Chapman Middle School





# Interior Spatial Relationships

---



Framingham: Fuller Middle School



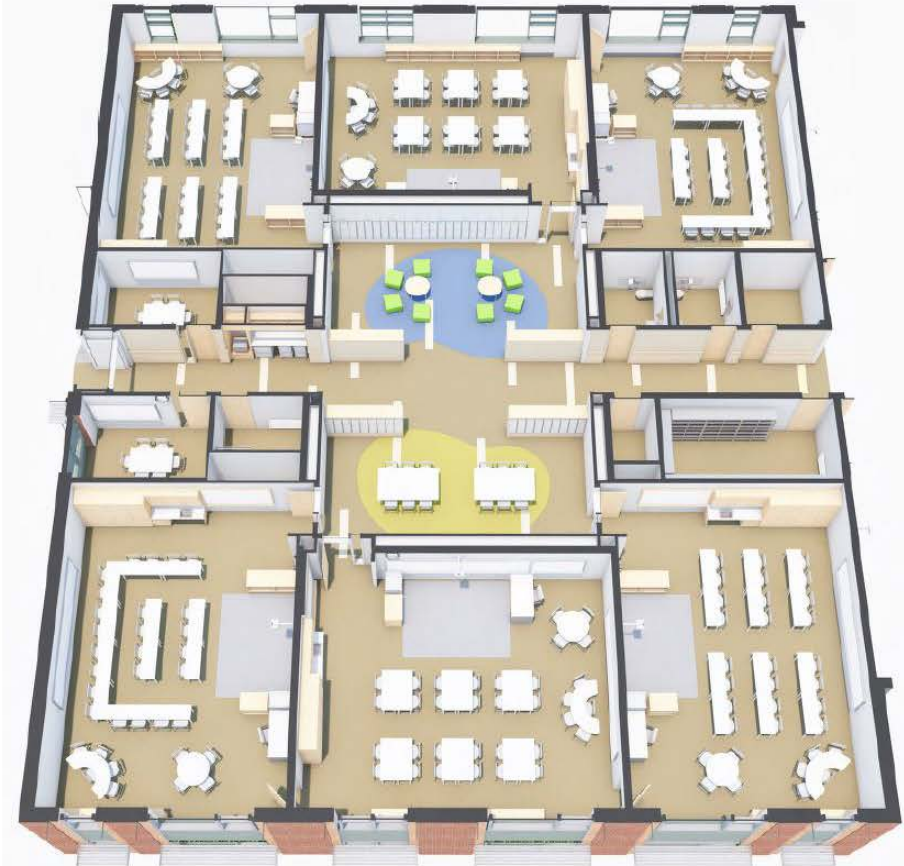
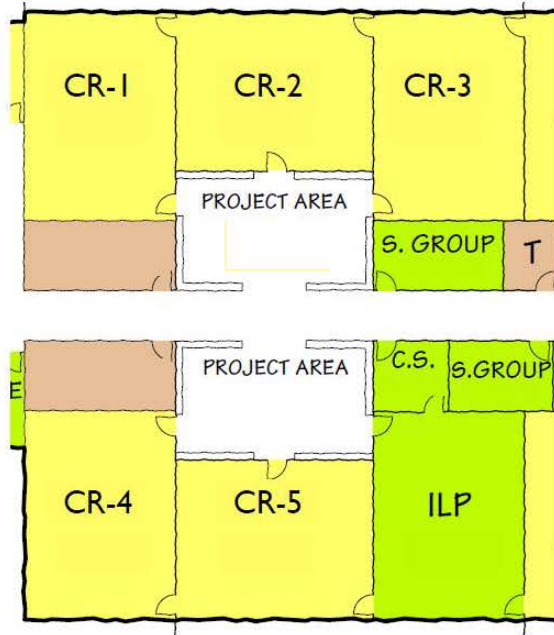
# Interior Spatial Relationships



Harvard: Hildreth Elementary School



# Interior Spatial Relationships - Classrooms





# Indoor-Outdoor Connection

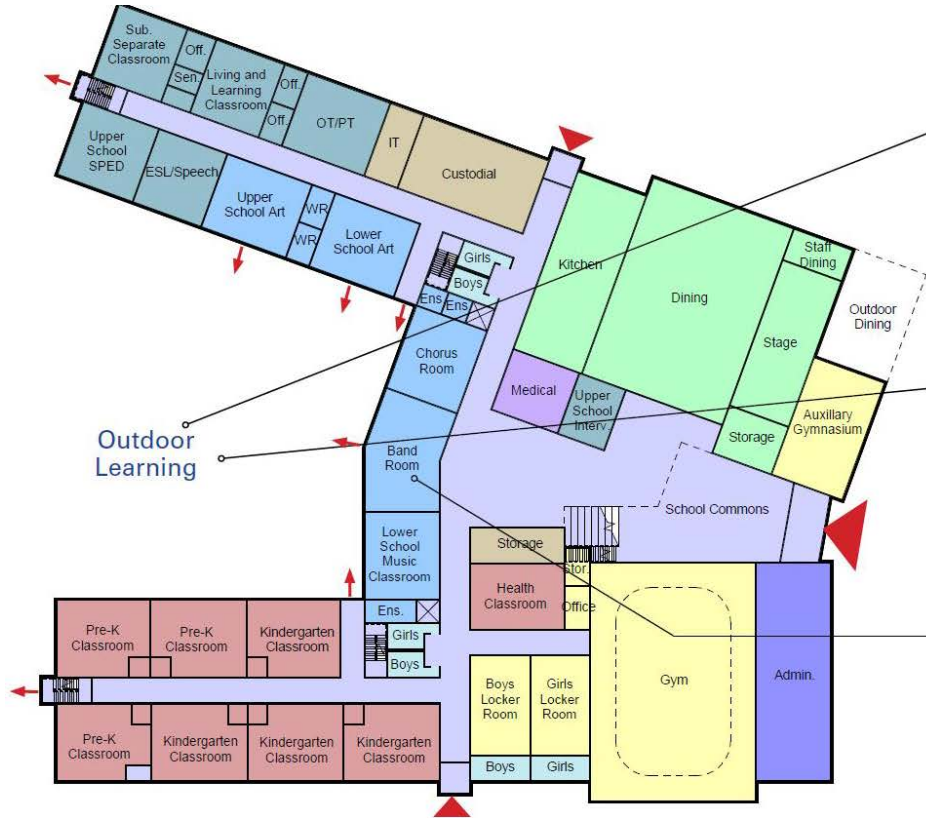


Holyoke: Chestnut Middle School





# Outdoor Learning



**First Floor Plan**







# Outdoor Learning



Perkins Eastman / MLK Jr. Middle / High School



Perkins Eastman / Charter Oak International Academy





# Scale & Building Exterior



EAST ELEVATION



WEST ELEVATION



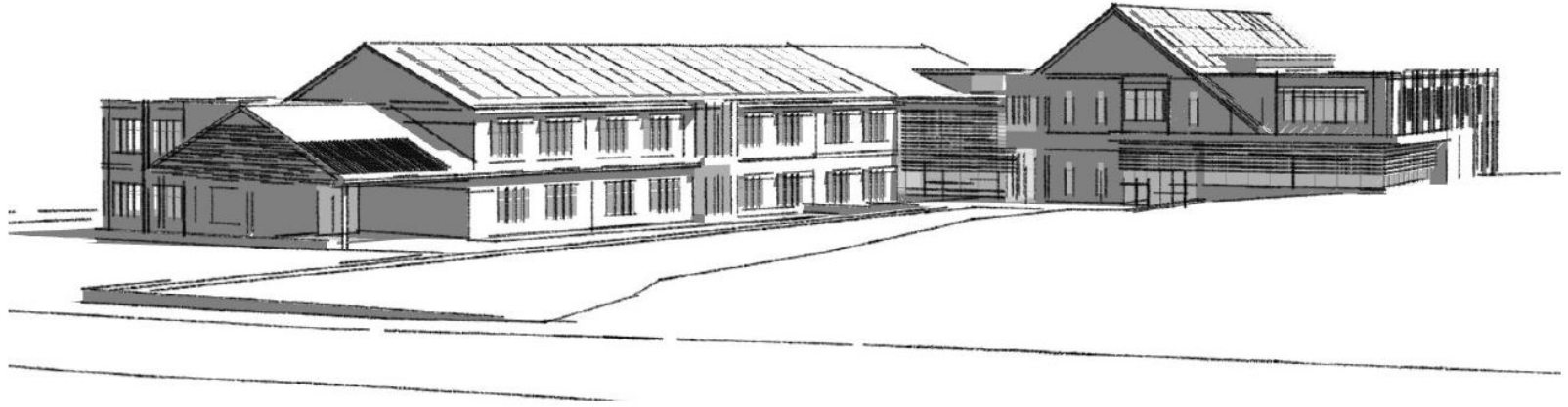
SOUTH ELEVATION



NORTH ELEVATION



# Scale & Building Exterior





# Scale & Building Exterior



Bristol County: Agricultural High School





# Scale & Site Context



Boston: Boston Arts Academy



# Scale & Site Context



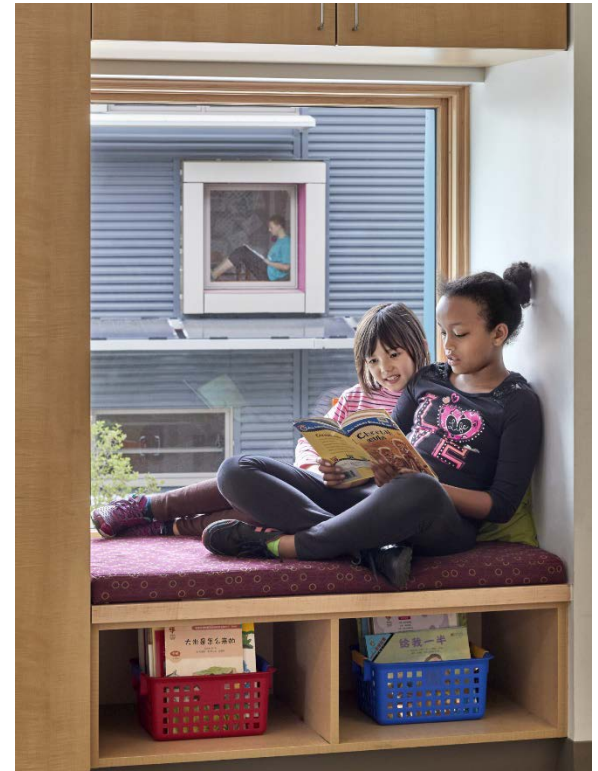
Boston: Boston Arts Academy



# Final Notes



Flansburgh / J.F.K. Elementary School



Perkins Eastman / Martin Luther King Jr School





# Matt Deninger

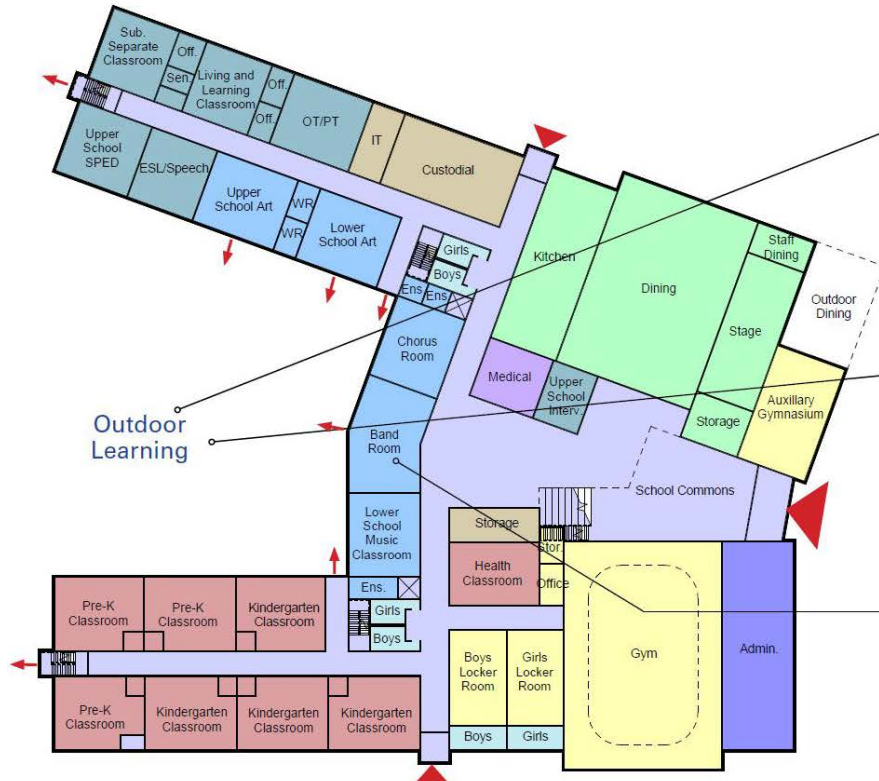
---

Special Education Design Considerations





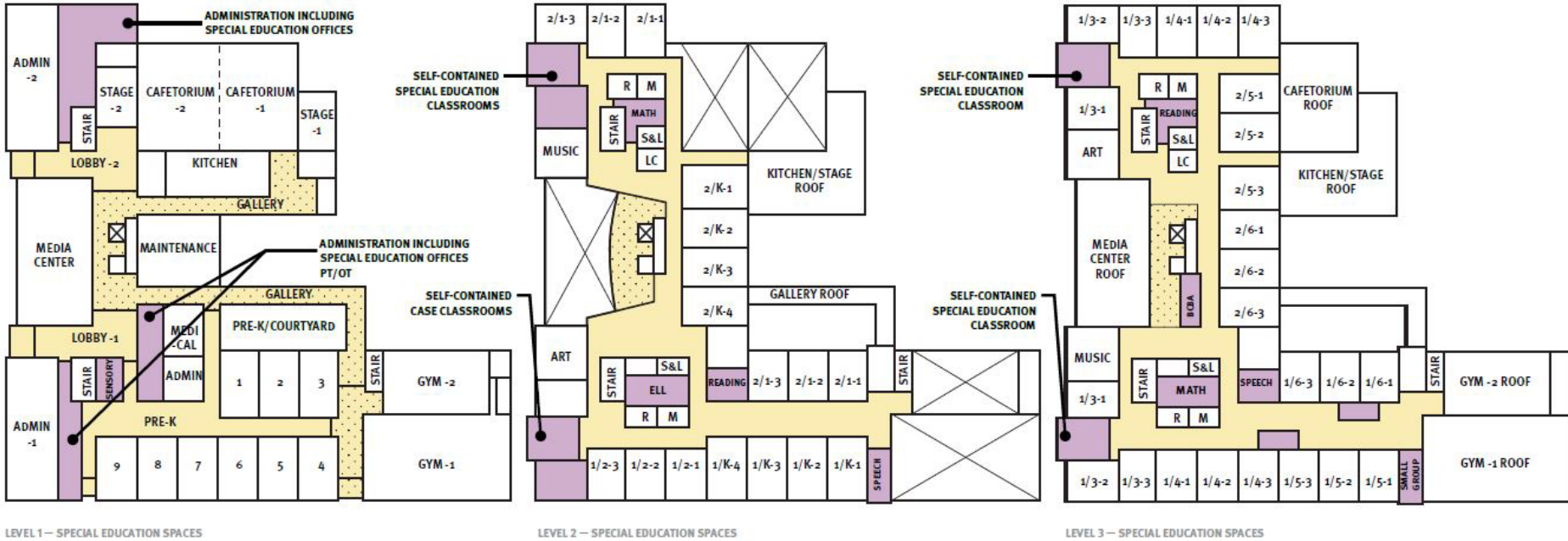
# Special Education Design Considerations



**First Floor Plan**



# Special Education Design Considerations





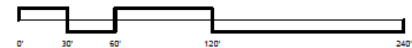
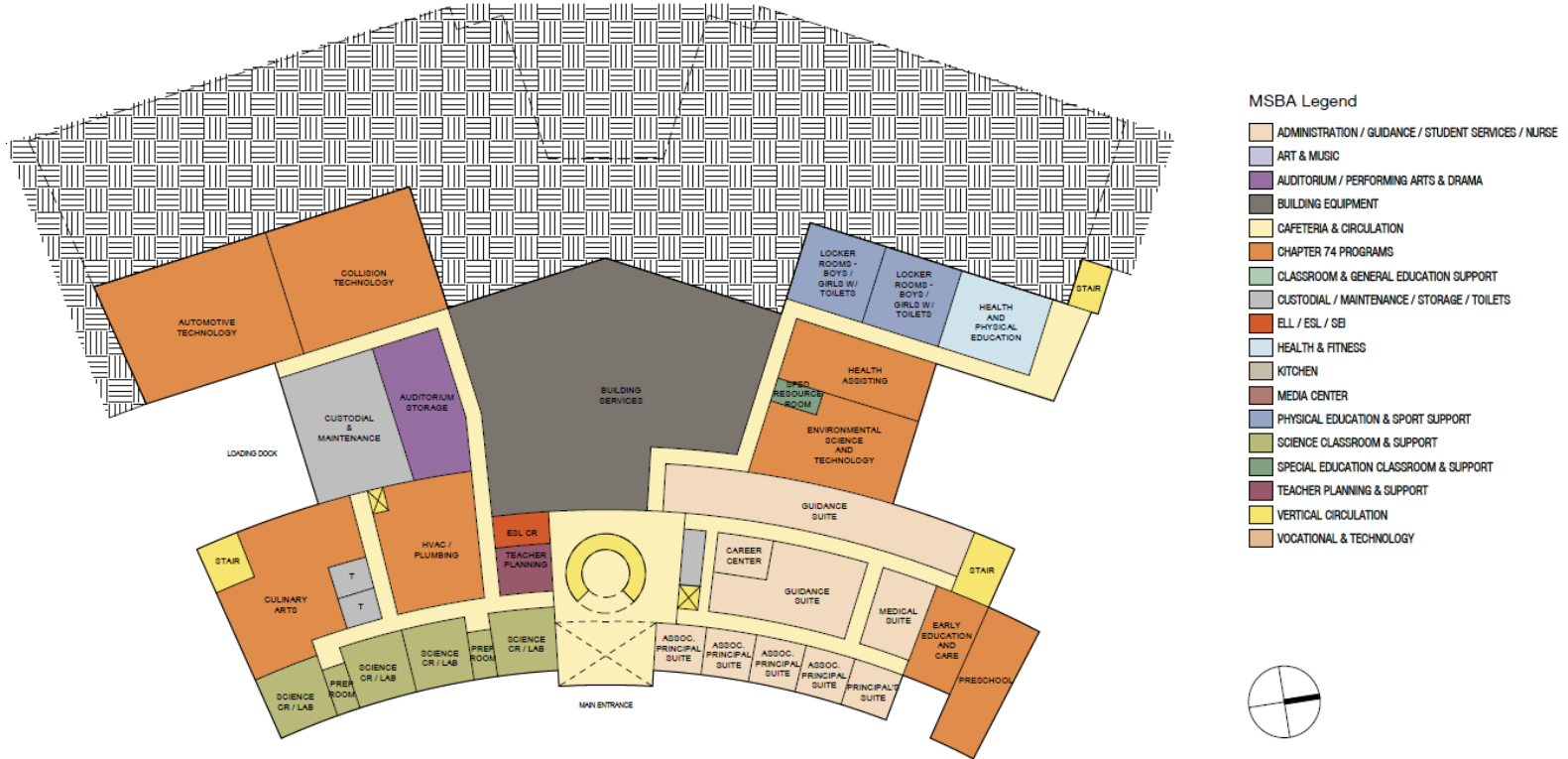
# Special Education Design Considerations



Holyoke: Chestnut Middle School



# Special Education Design Considerations





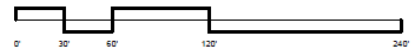


# Special Education Design Considerations



## MSBA Legend

- ADMINISTRATION / GUIDANCE / STUDENT SERVICES / NURSE
- ART & MUSIC
- AUDITORIUM / PERFORMING ARTS & DRAMA
- BUILDING EQUIPMENT
- CAFETERIA & CIRCULATION
- CHAPTER 74 PROGRAMS
- CLASSROOM & GENERAL EDUCATION SUPPORT
- CUSTODIAL / MAINTENANCE / STORAGE / TOILETS
- ELL / ESL / SEI
- HEALTH & FITNESS
- KITCHEN
- MEDIA CENTER
- PHYSICAL EDUCATION & SPORT SUPPORT
- SCIENCE CLASSROOM & SUPPORT
- SPECIAL EDUCATION CLASSROOM & SUPPORT
- TEACHER PLANNING & SUPPORT
- VERTICAL CIRCULATION
- VOCATIONAL & TECHNOLOGY

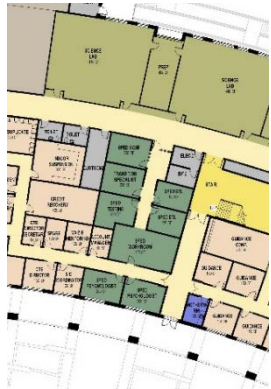




# Special Education Design Considerations

## SPED Office

Room Type	Room NFA	# Rms	Area Total
Psychologist	200	2	400
ETL	150	2	300
Transition Specialist	200	1	200
Testing Room	200	1	200
Workroom	425	1	425
Conference Room	200	1	200
<b>Total</b>			<b>1,725</b>



Level 1

## Connections I

Room Type	Room NFA	# Rms	Area Total
Life Skills Classroom w/Apartment	1,800	1	1,800
Life Skills Assist Toilet	100	1	100
Breakout Room	200	1	200
<b>Total</b>			<b>2,100</b>



Level 2

## Bridge

Room Type	Room NFA	# Rms	Area Total
Classroom	850	3	2,550
Self-Contained Toilet	100	1	100
Breakout Room	200	1	200
Student Adjustment Counselor Office	200	1	200
<b>Total</b>			<b>3,050</b>

## Connections II

Room Type	Room NFA	# Rms	Area Total
Classroom	850	1	850
Self-Contained Toilet	60	1	60
Breakout Room	200	1	200
<b>Total</b>			<b>1,110</b>



Level 3

## TASC

Room Type	Room NFA	# Rms	Area Total
ASD Classroom	850	2	1,700
Self-Contained Toilet	60	2	120
Breakout Room	200	1	200
Quiet Room	150	1	150
Life Skills Classroom w/Apartment	1,800	1	1,800
Life Skills Assist Toilet	100	1	100
<b>Total</b>			<b>4,070</b>



Level 4





# Terry Kwan

---

Educational Plan Submittal – final checks





# Discussion

---



Close

---

Thank you!

