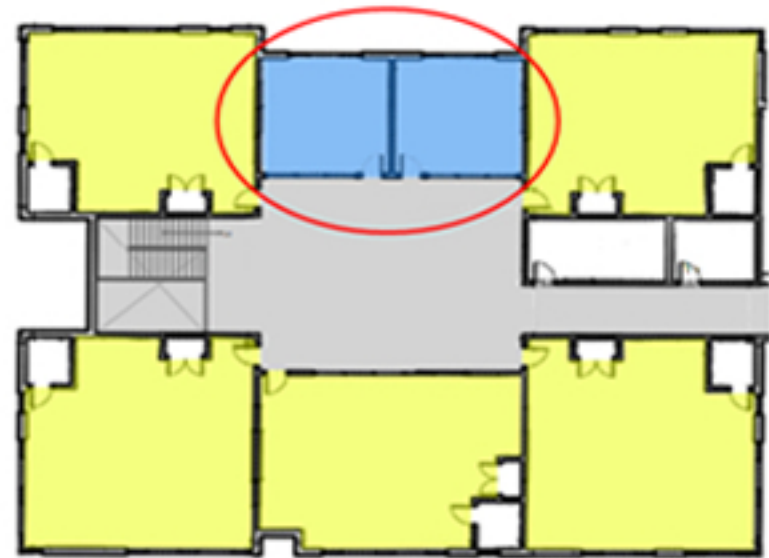


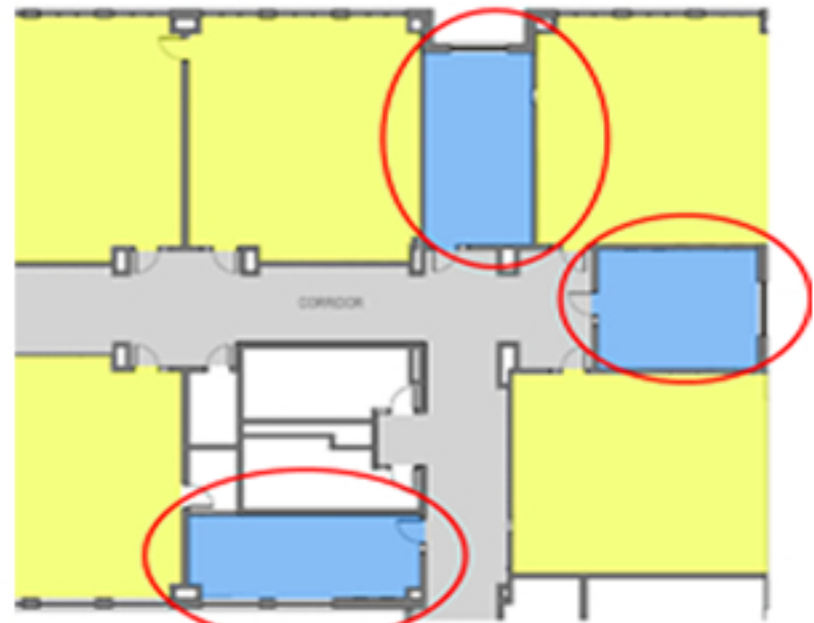
# Break-out Space | Neighborhood Cluster

- Smaller classroom(s) make up a learning neighborhood.
- Room(s) are used for smaller group study sessions for more individualized learning.
- Provides smaller areas for flexible individual and small group instruction.
- These spaces must be scheduled by appropriate staff.
- Smaller break-out space used for the nearby classrooms can be marked with simple furniture as a bench or table.
- Informal break-out space used by students during a free period. Do not need to be scheduled.
- Some break-out spaces can be closed for a private classroom use and then opened for communal use.
- Additional and often specialized instructional, testing and support spaces, with careful consideration to the grade configuration and scheduling conflicts of staff.
- Dedicated supportive space(s) that allows staff to work with students on a specific function. (e.g. technology/ computer rooms, media centers, speech therapy etc.)



*Classrooms – 960 SF*

*Break-out Space – 350 SF*



*Classrooms – 950 SF*

*Break-out Space – 350 SF*

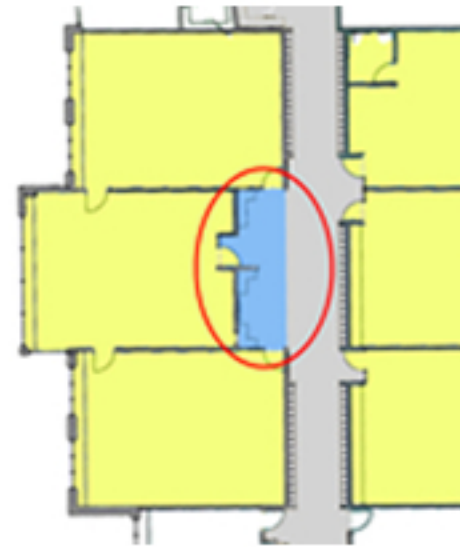
## Key

■ Classrooms

■ Break-out Spaces

# Break-out Space | Neighborhood Cluster

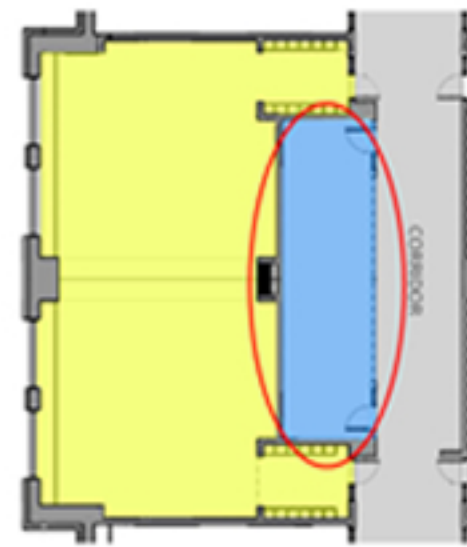
- Smaller classroom(s) make up a learning neighborhood.
- Room(s) are used for smaller group study sessions for more individualized learning.
- Provides smaller areas for flexible individual and small group instruction.
- These spaces must be scheduled by appropriate staff.
- Smaller break-out space used for the nearby classrooms can be marked with simple furniture as a bench or table.
- Informal break-out space used by students during a free period. Do not need to be scheduled.
- Some break-out spaces can be closed for a private classroom use and then opened for communal use.
- Additional and often specialized instructional, testing and support spaces, with careful consideration to the grade configuration and scheduling conflicts of staff.
- Dedicated supportive space(s) that allows staff to work with students on a specific function. (e.g. technology/ computer rooms, media centers, speech therapy etc.)



*Classrooms – 900 SF*

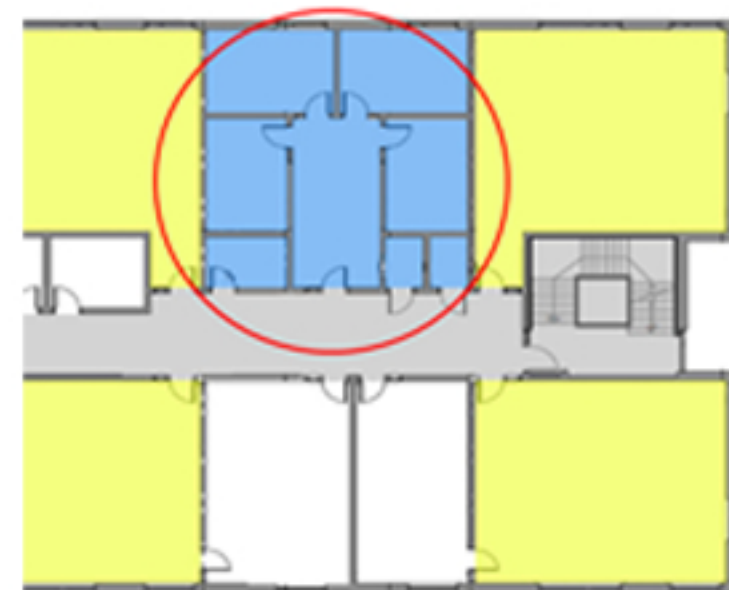
*Break-out Space – included in*

*Grossing Factor*



*Classrooms – 850 SF*

*Break-out Space – 420 SF*



*Classrooms – 940 SF*

*Break-out Space – 200 SF*

## Key

■ Classrooms

■ Break-out Spaces