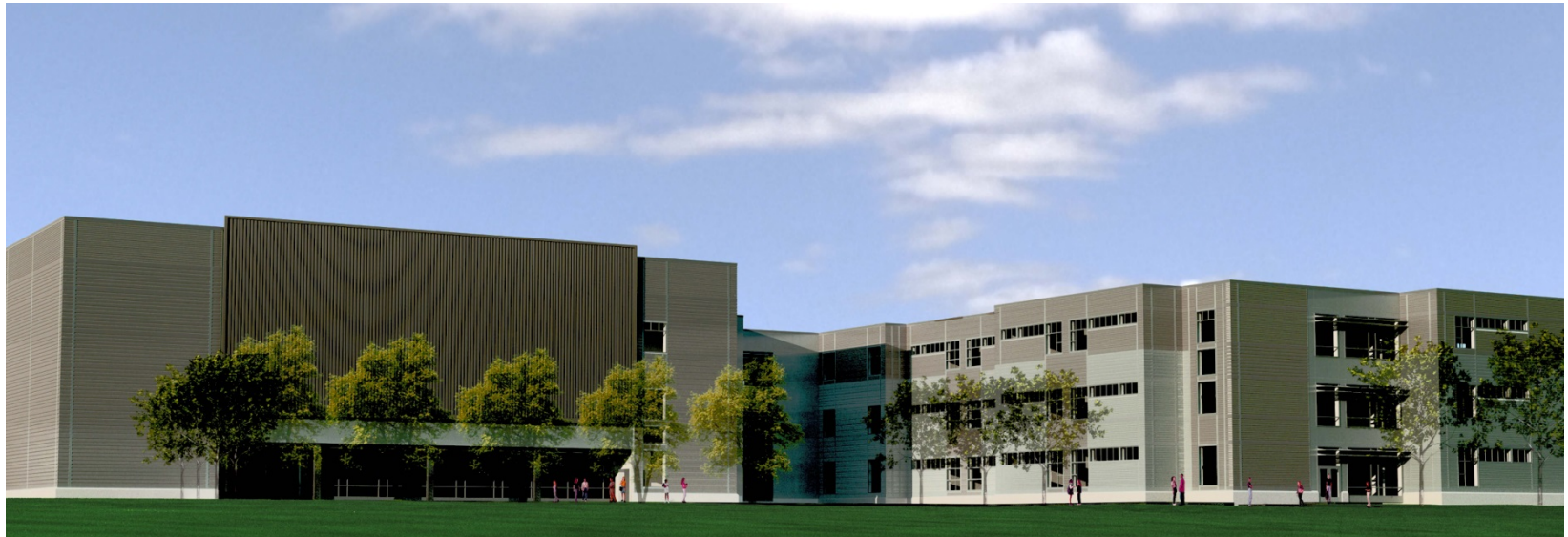




Sherwood Project Sign



S H E R W O O D M I D D L E S C H O O L

SHERWOOD BUILDING COMMITTEE

ERIN HUGHES CANZANO
ROBERT A. COX
HENRY J. FITZGERALD, CHAIRMAN
JOHN I. LEBEAUX
DANIEL J. MORGADO
KATHERINE A. NASH
JOSEPH M. SAWYER

THIS PROJECT FUNDED IN PART BY THE MASSACHUSETTS SCHOOL BUILDING AUTHORITY

OWNER PROJECT MANAGER



CONSTRUCTION MANAGER



ARCHITECT



DESIGN CONSULTANTS

NITSCH ENGINEERING
WARNER LARSON
BOLTON AND DIMARTINO
AKAL ENGINEERING INC.

SEAMAN ENGINEERING
ART ENGINEERING CORP
COLBURN AND GUYETTE CONSULTING
THE GREEN ENGINEER

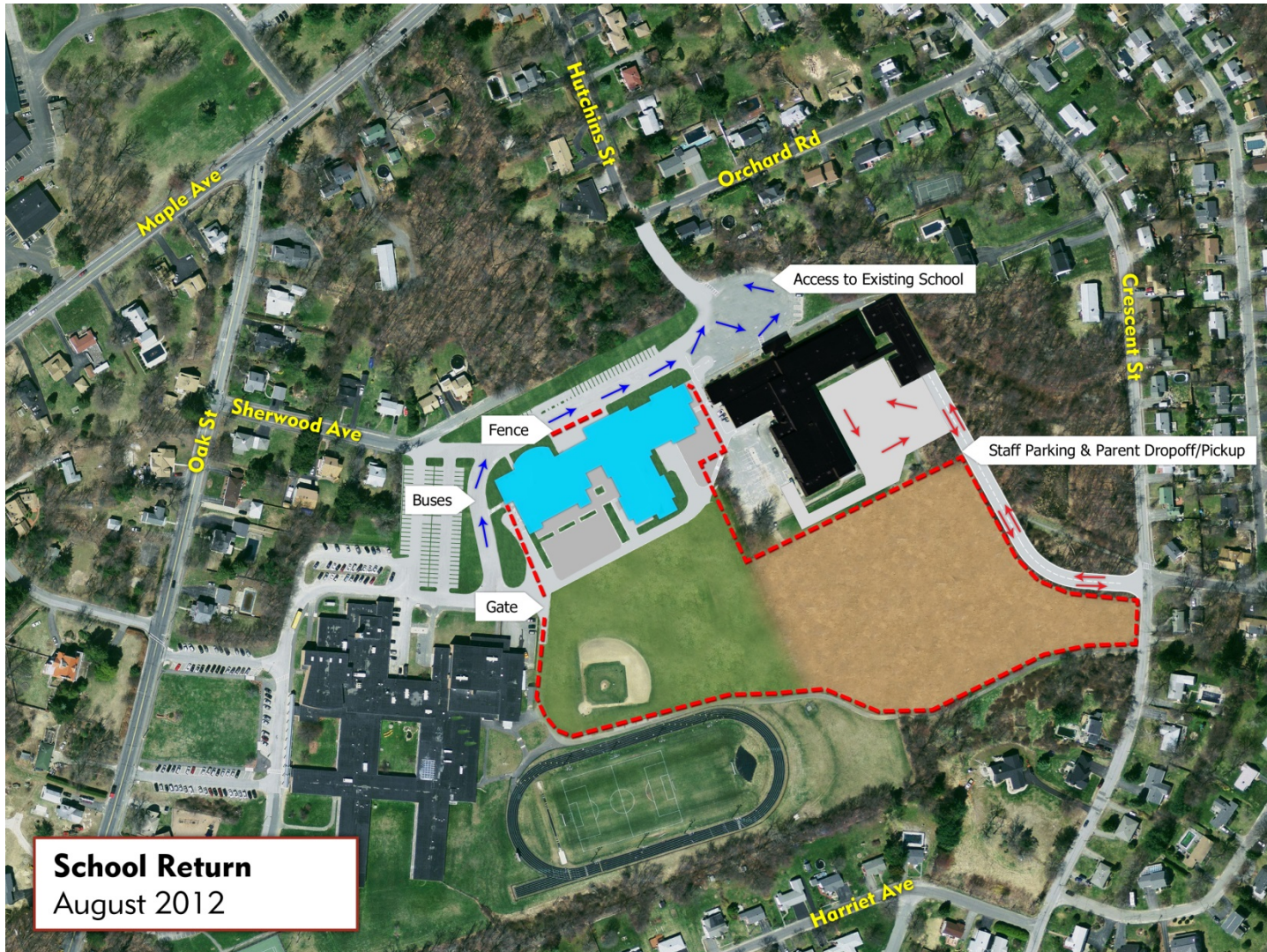


Phase 1



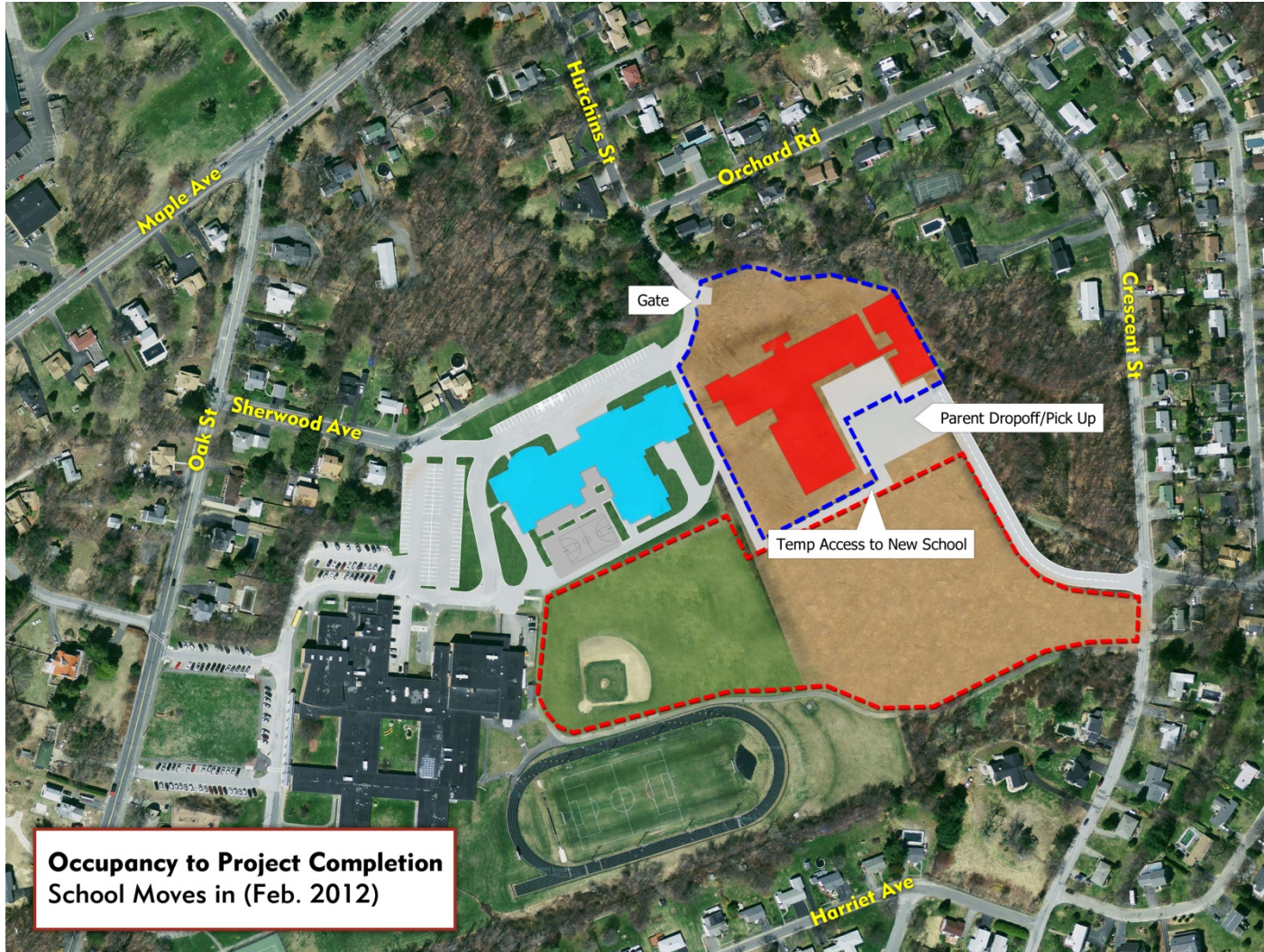


Phase 2





Phase 3



Occupancy to Project Completion
School Moves in (Feb. 2012)



Phase 4



Project Complete
School Return Fall 2013



Getting Started





Steel Erection





January 2012





Aerial of Campus

