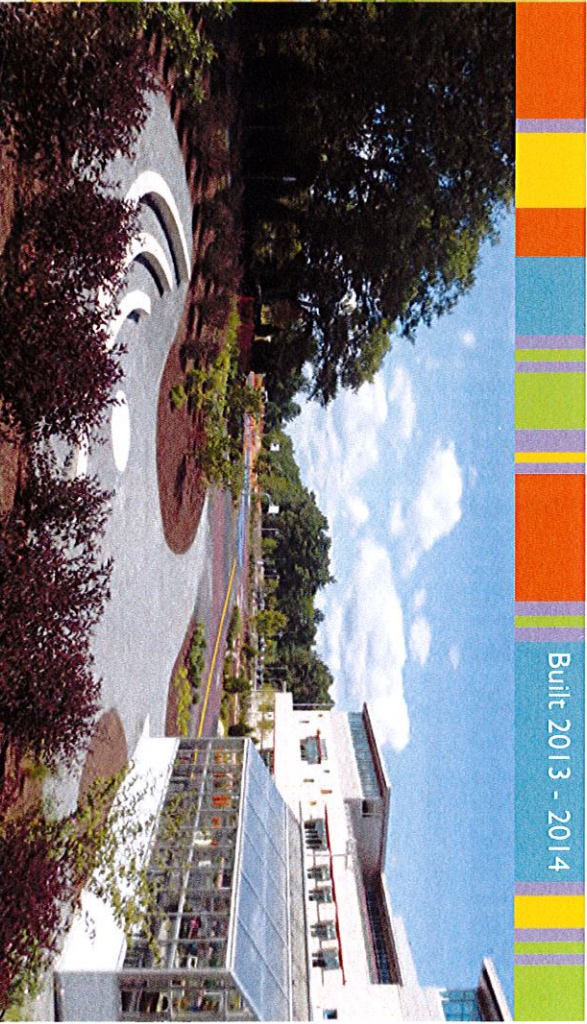




## FEATURES

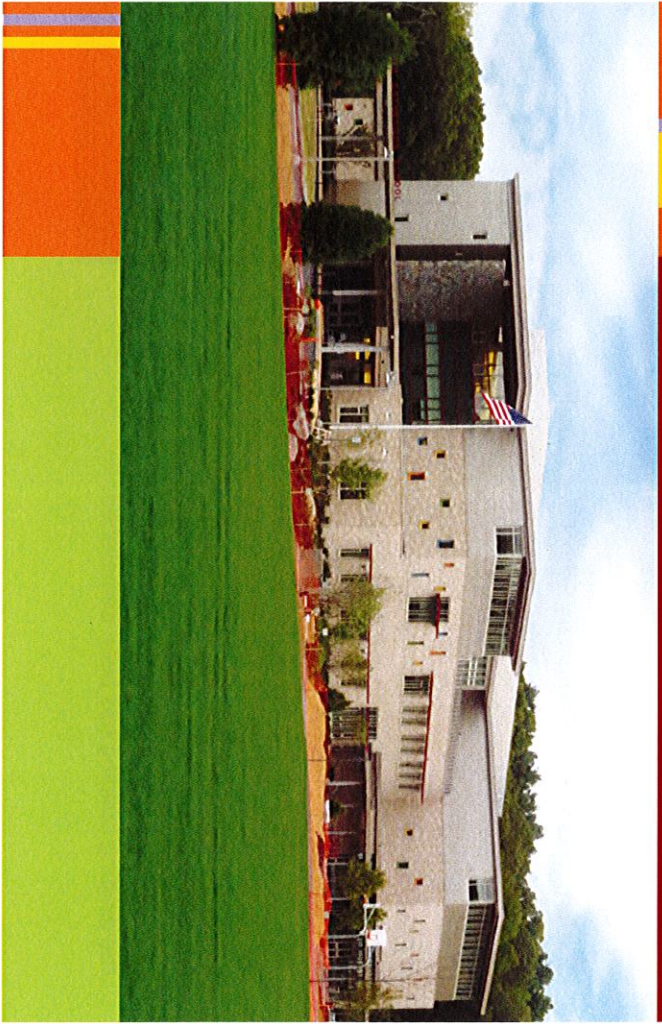
- Collaborative and flexible learning spaces for personalized learning and team work
- Integrated content instruction that allows for inquiry and project-based learning experiences
- Informational literacy focus in reading and writing, including the school library
- Comprehensive musical, visual and performing arts instruction
- Indoor and outdoor physical education, play and recreation opportunities
- A hybrid and mobile approach to 21st century instructional technology
- Community focus on Safe Routes to School - walking, bicycling, carpooling, busing
- Before and after school programming, and year round community use
- Original LEED-S Silver science curriculum designed to complement the site and school
- Energy efficiency that exceeds MA Energy Code by over .22%
- Prominent daylighting in classroom and common spaces
- Indoor water use reduction of over 35%
- White roof and sunshades resulting in high thermal performance
- Over 95% of site construction waste was recycled
- Pedestrian and bicycle access
- Multi-story design reduces building footprint
- Access to landscape views



Built 2013 - 2014



# JOSEPH ESTABROOK ELEMENTARY SCHOOL LEXINGTON, MASSACHUSETTS



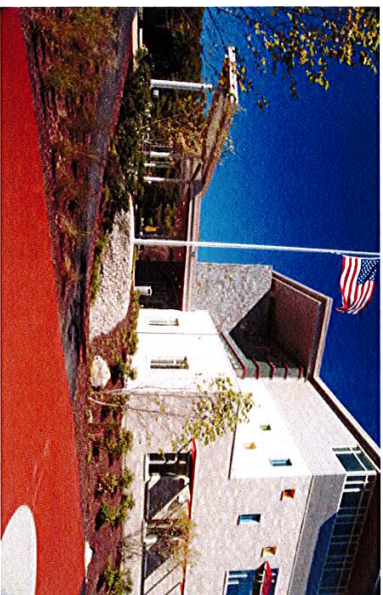
# Estabrook Elementary School

Lexington, Massachusetts

Study · New Construction

91,840 SF · 540 students · Grades K-5

---



DINISCO Design worked with the Town of Lexington to construct a new 540 student, K-5 elementary school on the site of the former Estabrook Elementary School.

The former Estabrook Elementary School was a single story, 60,000 SF building with a small addition from 1987 and three portable classrooms added in 1989.

The beautiful 13 acre site abuts conservation land. The School has embraced the conservation land as part of their educational program, called "The Big Backyard".

Due to site constraints, the age of the existing one-story building, and with no other available spaces in town for swing space, constructing a new elementary school in the easterly portion of the site was determined to be the most cost effective and preferred solution. A three-story building nestled into the rear of the site has been constructed and the existing building has been demolished.

Due to extenuating circumstances, the school had to be substantially complete by June 2014. In order to meet this aggressive schedule, the project team chose the CM at Risk (Chapter 149A) delivery method. In addition, two early bid packages were scheduled. The first bid package was to prepare the site for construction. This occurred during the summer of 2012. The second package was for the foundation and steel erection, which occurred in the fall of 2012.

The new Elementary School is certified as a LEED-S Silver school. Other special features of the School include a roof garden, a small green house and an outdoor amphitheatre. All of these spaces are a part of the extraordinary curriculum at the Estabrook Elementary School.



**CONSTRUCTION DATES:** January 2013 - June 2014

**BAS DESIGN FEE:** \$3,000,000

**PROJECT BUDGET:** \$43,392,248

**COST ESTIMATE:** \$31,145,045

**GMP:** \$32,795,932

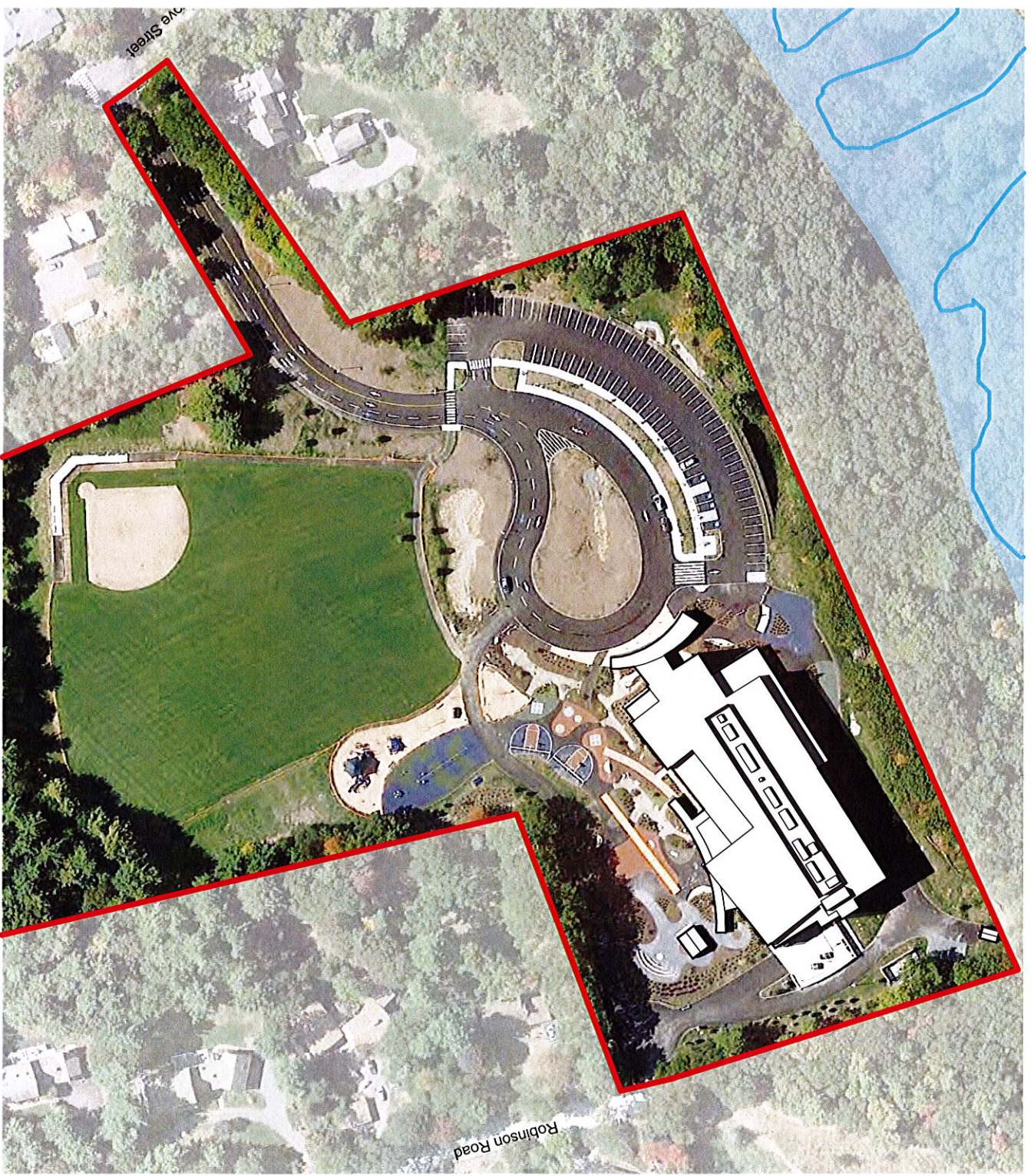
**FIELD CHANGE ORDERS:** \$365,654 (1.11%)

**OWNER CHANGE ORDERS:** \$41,653 (0.13%)

**CONSTRUCTION COST/SF:** \$362/SF

**REFERENCES:** Patrick W. Goddard, Director of Public Facilities  
(781) 274-8958

**Estabrook  
Elementary School**  
Lexington, MA



**Site Plan**