



FOCUSED EDUCATIONAL LEADERSHIP

Form a "Working Group"

- Key School Administrators
- Nimble, facilitates decision-making
- Knowledge of district
- Committed to the educational vision
- Ideal size 5-8 people



educational visioning





SETTING AGENDAS/ EXPECTATIONS

GROUP COMPOSITION


VISIONING: STRUCTURED APPROACH

SESSION TIMING

COMMUNICATING OUTCOMES



educational visioning




VISIONING: THE FOUNDATION

- TRUST THE PROCESS
- DELIVERABLES:

Educational Narrative }
Space Summary/ Program }
Spatial Relationship Diagram }

GUIDING PRINCIPLES FOR DESIGN



REFERENCE POINT THROUGHOUT PROJECT



VISIONING: SETTING THE AGENDA

First action of the Working Group

- Be clear about what is needed
- Plan the days, session, rhythm
- Pace yourselves
- Vary the activities
- Active, experiential exercises
- Keep people up and moving



VISIONING SESSION COMPOSITION

IMPORTANT TO INVOLVE A BROAD VARIETY OF STAKEHOLDERS
(30-50 is a manageable number):

- Community Members
- Faculty Leaders
- District Leadership – Administration
- Town Government Leadership
- School Building Committee Members
- Students
- Key Staff Members
- Parents
- Business leaders
- Public Safety Officials
- Seniors
- Non-profit Community Allies



VISIONING SESSION TIMING

Ideal time: October-November time frame

- Back in school frame of mind
- No MCAS
- No holidays
- Plan on 3-5 full day sessions
- Plan for venue, food
- On site versus off site
- Ideally participants attend ALL sessions
- Complete process allow 6-8 weeks minimum



educational visioning



COMMUNICATING VISIONING OUTCOMES



- Share the vision early and often
- Discuss with all staff
- Understand and listen to reactions: concerns and suggestions

educational visioning

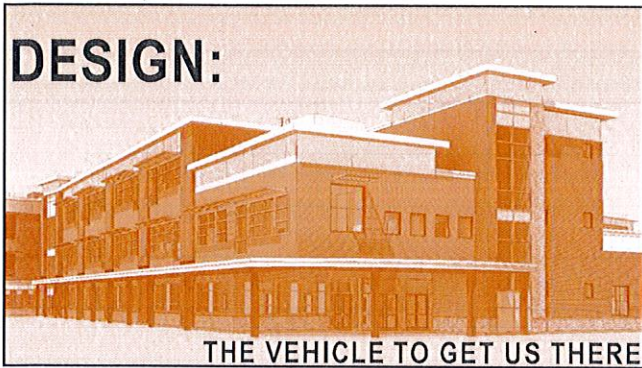


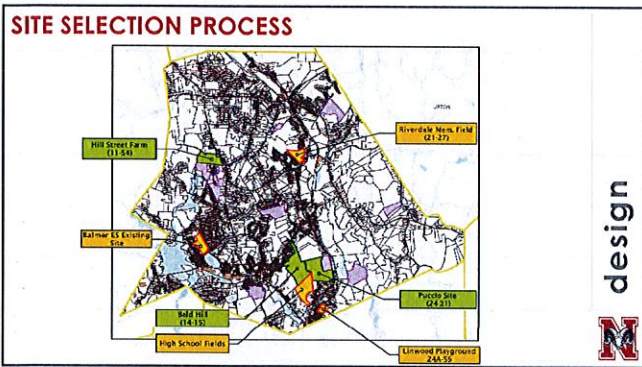
VISIONING: IMPORTANCE OF SITE VISITS



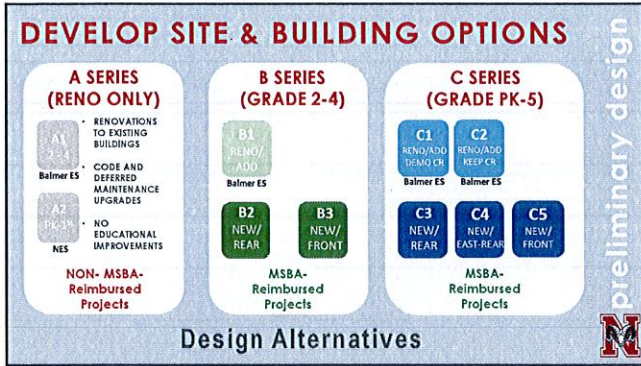
educational visioning

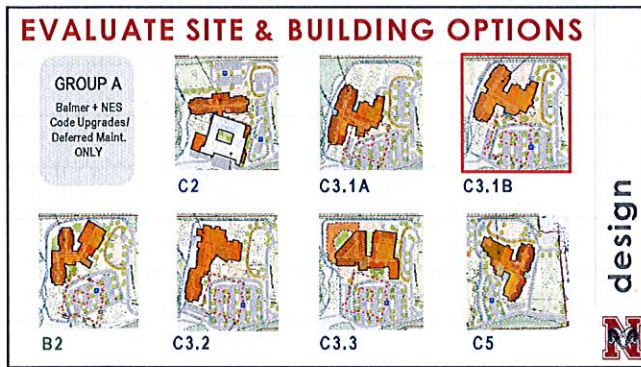


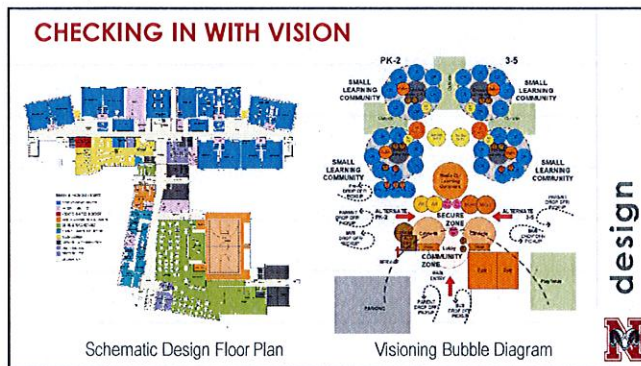


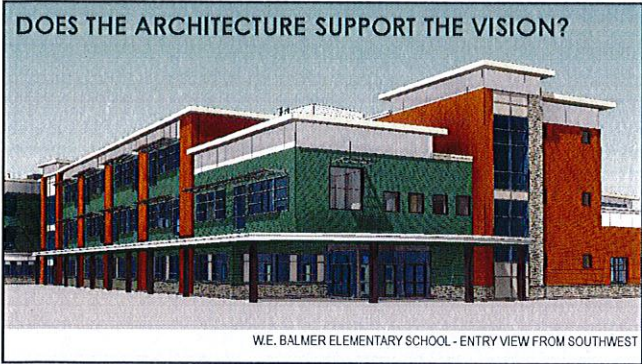












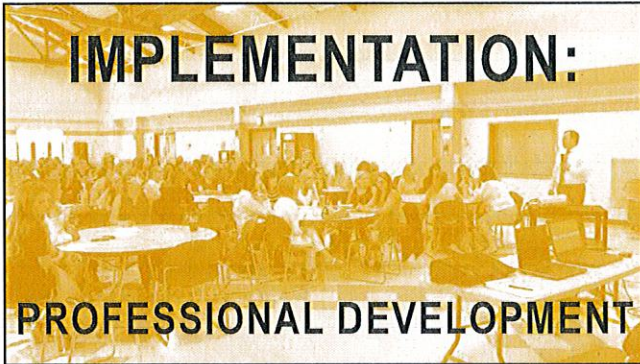
PROJECT COST BENCHMARKING

TOWN	AREA (SQ FT)	YEAR START CONSTRUCTION	PROJECT COST	ESCALATION YEARS	APPROX. ESCALATION @ 1.5 YRS	ESCALATED TOTAL COST	ESCALATED TOTAL COST/ SQ FT
LUDLOW - OWEN ST. ES	106,250	5/1/2019	57,451,421	0.0	1.000	57,451,421	541
FAYMON - MILDEN ES	119,693	1/1/2019	64,971,831	0.5	1.018	66,108,838	552
SPRATCH - OWEN ES	123,700	3/1/2019	69,789,269	0.5	1.018	71,010,580	574
NORTHBRIDGE - BALMER ES	167,352	8/1/2019	100,968,194	0.0	1.000	100,968,194	603
HAYWARD - HILDRETH ES	81,836	11/1/2019	48,618,000	0.5	1.018	49,468,815	604
LEWINGTON - HAYTHORPE ES	110,000	6/1/2018	63,339,418	1.0	1.035	67,626,298	615
TERRELL ES	75,390	5/1/2019	46,567,962	0.0	1.000	46,567,962	618
MILLIS - OLYVE BRIMAN ES	89,832	2/1/2018	53,365,857	1.5	1.053	56,167,964	625
MANLYBROUGH - FICKER ES	108,730	3/1/2019	67,525,253	0.5	1.018	68,706,845	632
NICHOLAS - BALDWIN ES	90,702	6/1/2018	57,862,414	1.0	1.035	59,887,599	660

MANAGING EXPECTATIONS

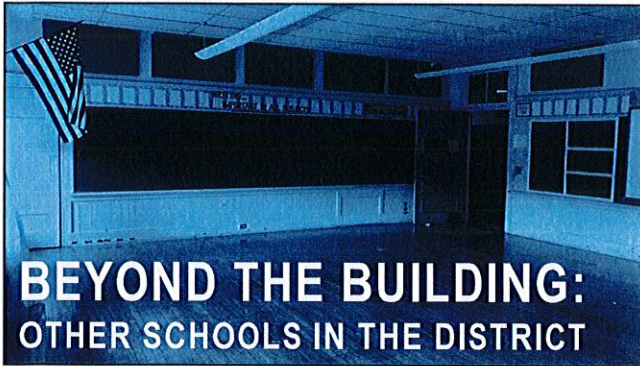
- Potential Reimbursement Rate
- Eligible Costs Versus Ineligible
- Local Share Versus State Share
- MSBA Form 3011
 - Run For Each Option - Local And State Shares Change
- Site Cost Cap At 8%
- Construction Cost /Sf Cap \$333/Sf
- FF&E Technology Budgets - \$1,200 Per Student
- VAT Flooring Abatement











LOOKING AT THE WHOLE DISTRICT

How do all buildings and grade levels become aligned when facilities will be so different?

- District facilities master plan – small surgical improvements
- Implement educational strategies district-wide
- Professional development


beyond the building

LOOKING AT THE WHOLE DISTRICT

• Professional development – make sure other schools understand what's happening at new school


beyond the building

LOOKING AT THE WHOLE DISTRICT

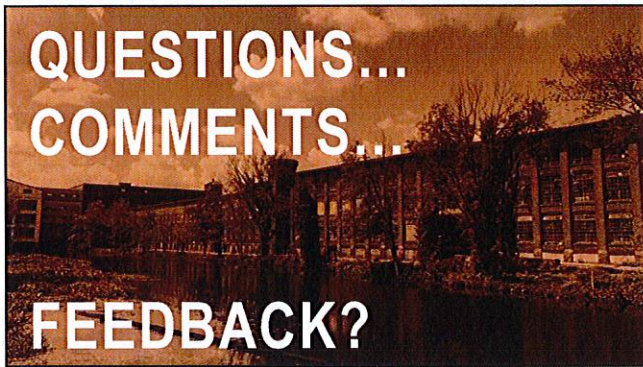


- 21st C skills development in upper grades preps staff for rising ES students with new skills


beyond the building



**QUESTIONS...
COMMENTS...
FEEDBACK?**



Thank you for your attention!



SMMA Project Management

N NORTHBRIDGE PUBLIC SCHOOLS

Massachusetts School Building Authority
For a better future in education

