

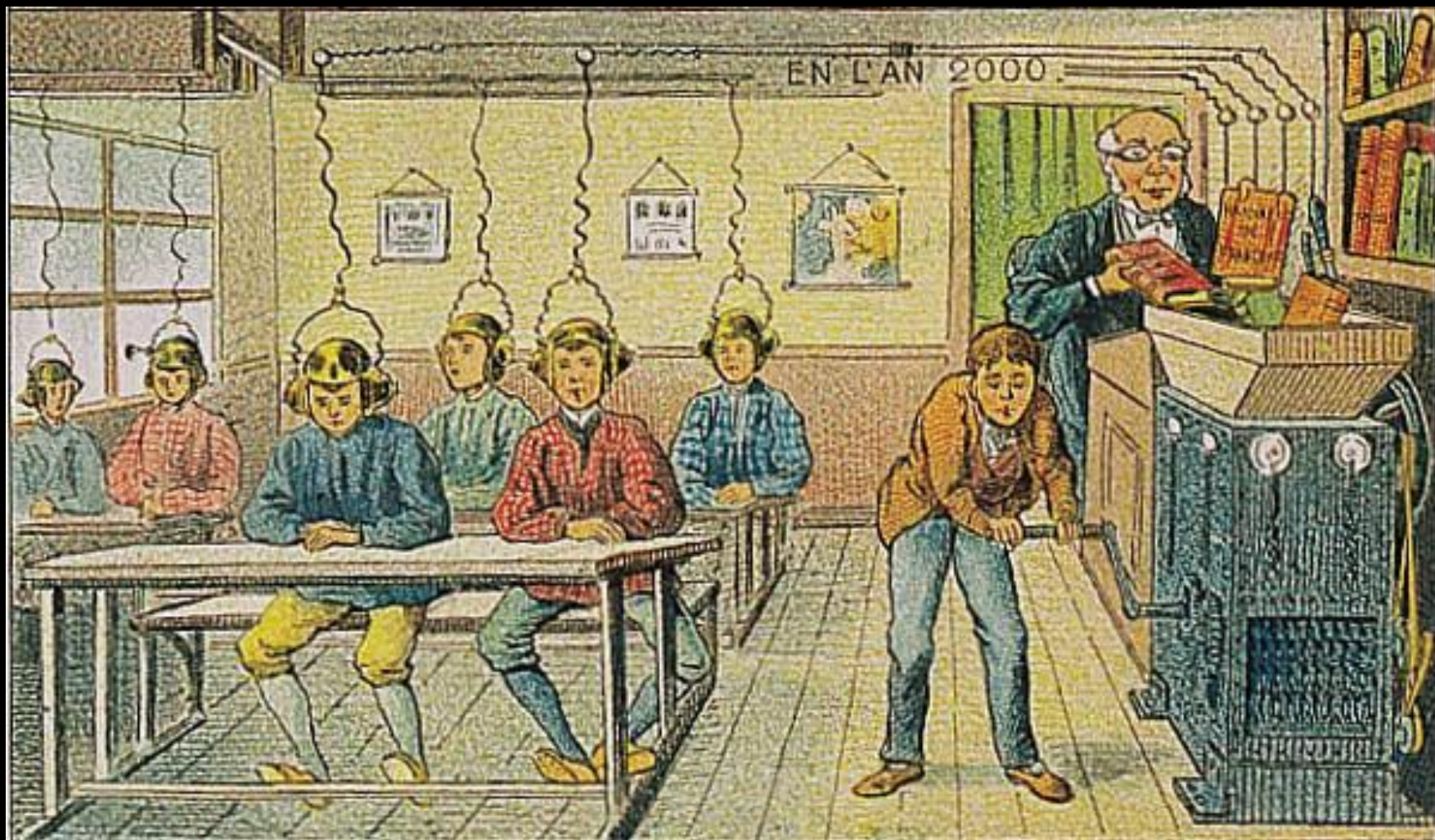


What makes learning environments effective?

Relationships among educational goals, design principles, and settings

Dr. Daniel Wilson
@danielwilsonPZ





School in the year 2000, *Jean-Marc Cote (1899)*

Performance-based

Socially constructed



Formal & Informal

**Learning
Goals**

Qualities

Settings

Collaboration, identity formation,
curiosity, creativity, perspective-taking, etc.

Qualities

Settings



Collaboration, identity formation,
curiosity, creativity, perspective-taking, etc.

Qualities

Classrooms, hallways,
community spaces,
learning
neighborhoods.

Collaboration, identity formation,
curiosity, creativity, perspective-taking, etc.

Daylighting, views,
circulation & movement,
variation, visibility,
flexibility.

Classrooms, hallways,
community spaces,
learning
neighborhoods.

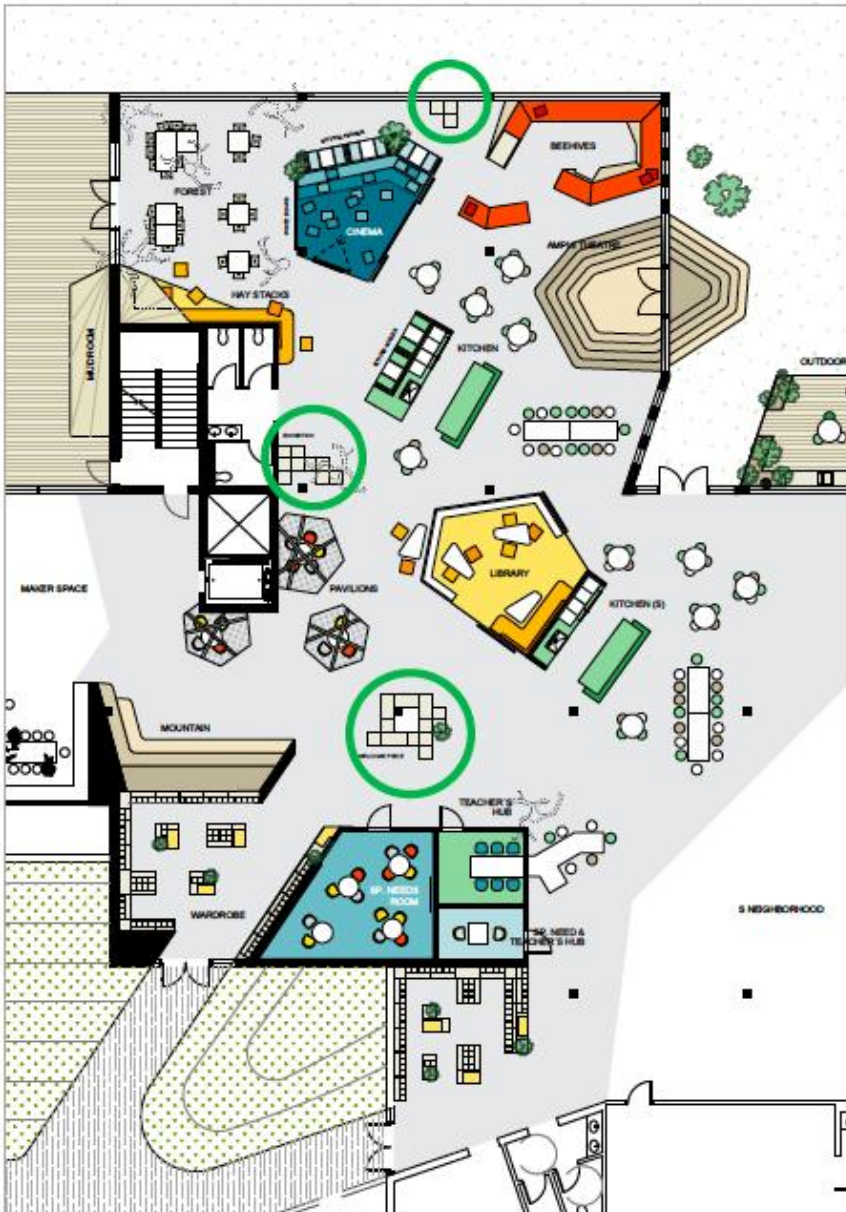
Curiosity & Perspective-taking



Curiosity & Perspective-taking

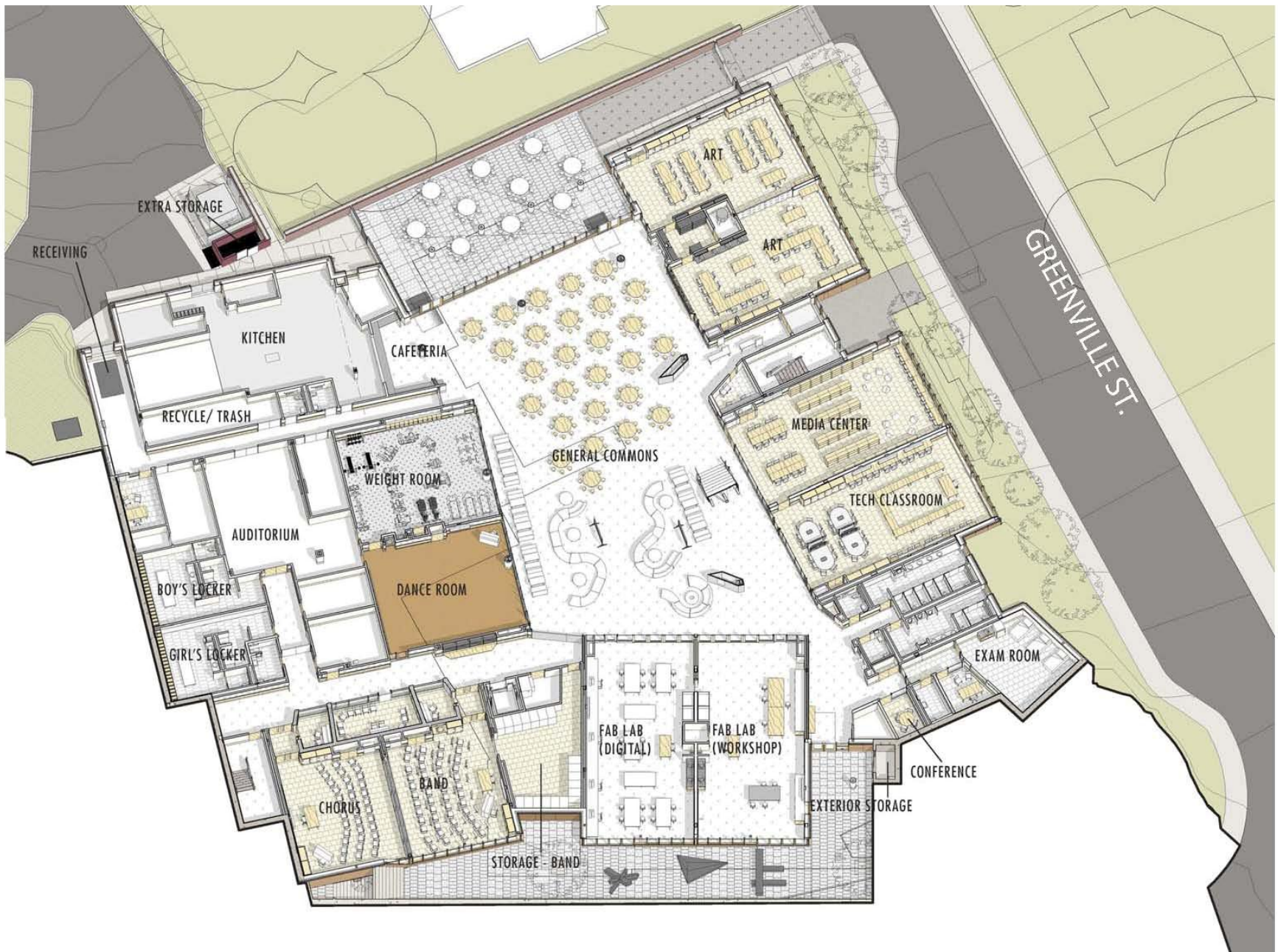


Curiosity & Perspective-taking

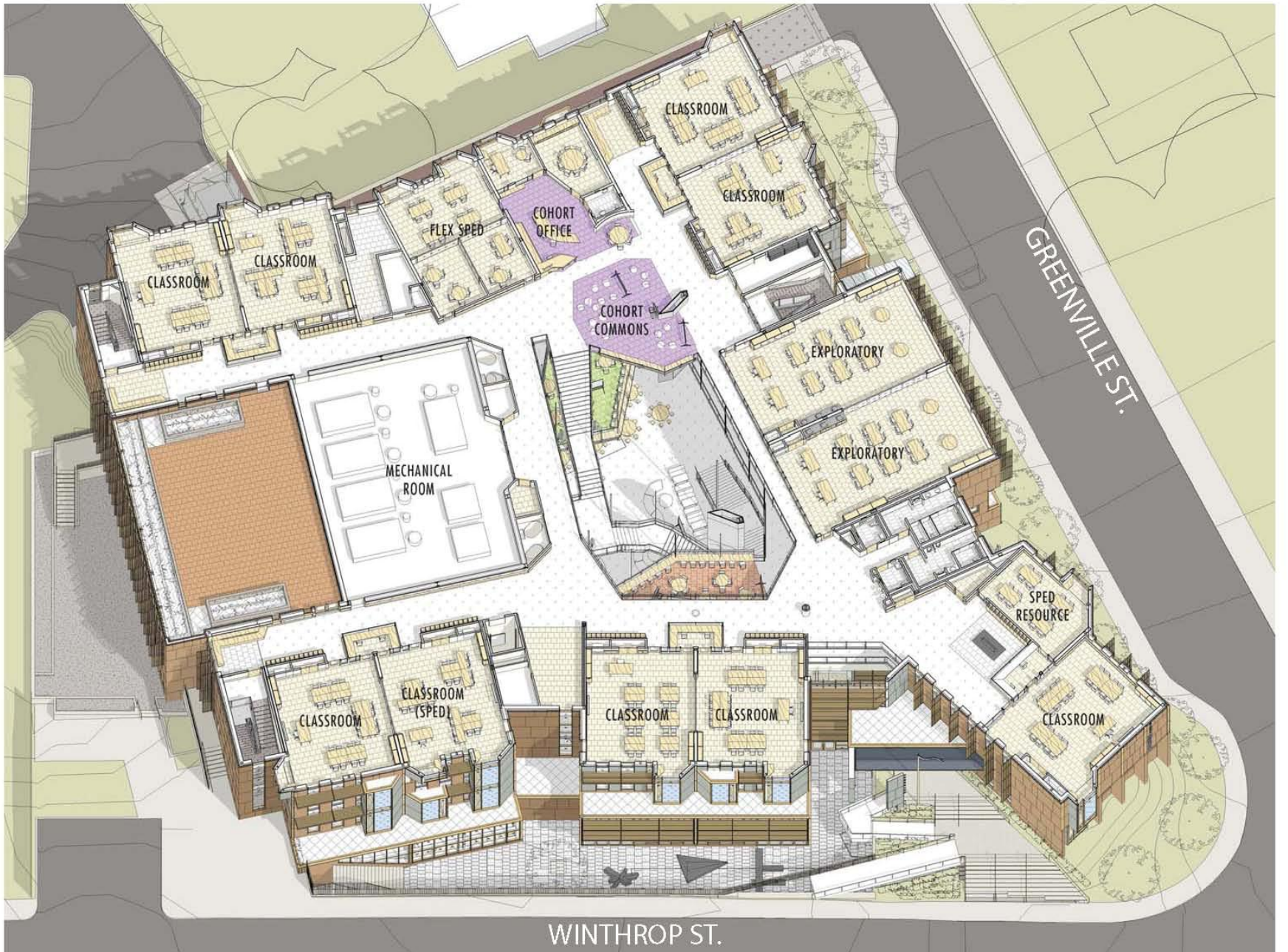


Informal Learning





1ST FLOOR PLAN



4TH FLOOR PLAN

Identity & Collaboration



Identity & Collaboration



Identity & Collaboration





Reflections

Space is just one dimension of **culture** – *language, routines, roles, power, etc. are important allies.*

Habits are hard to break – *resources to unlearn/learn practices are vital.*



Resources

Barrett, P., Zhang, Y., Moffat, J., & Kobbacy, K. (2013). A holistic, multi-level analysis identifying the impact of classroom design on pupils' learning. *Building and Environment*, 59, 678-689.

Hallinger, P & Heck, R, 1998, Exploring the principal's contribution to school effectiveness: 1980–1995, *School Effectiveness and School Improvement*, 9, 157–91

Lippman, P. (2010). *Evidence-based design of elementary and secondary schools: A responsive approach to creating learning environments*. Hoboken, NJ: John Wiley & Sons.

Learning Environments for Tomorrow (LEFT) Institute, Harvard University
<https://www.gse.harvard.edu/ppe/program/learning-environments-tomorrow-next-practices-educators-and-architects>

Louis, K. S., Leithwood, K., Wahlstrom, K. L., & Anderson, S. E. (2010). Learning from leadership: Investigating the links to improved student learning: The Wallace Foundation.

Oblinger, D. (2006). *Learning Spaces*. Washington DC: EDUCAUSE Partnership for 21st Century Skills. (2002). Learning for the 21st Century. Washington, DC: Partnership for 21st Century Skills.

Project Zero, Harvard Graduate School of Education
<http://www.pz.harvard.edu>

Tanner, C. K. (2008). Explaining relationships among student outcomes and school's physical environment. *Journal of Advanced Academics*, 19(3), 444-471.

Dr. Daniel Wilson
@danielwilsonPZ

