

Massachusetts School Building Authority

Deborah B. Goldberg

State Treasurer and Receiver-General

Chairperson

James A. McDonald

Chief Executive Officer

Jack McCarthy

Executive Director



MSBA Overview

Massachusetts School Building Authority

Deborah B. Goldberg

State Treasurer and Receiver-General

Chairperson

James A. McDonald

Chief Executive Officer

Jack McCarthy

Executive Director



Our Mission

Partner with Massachusetts communities to support the design and construction of educationally-appropriate, flexible, sustainable, and cost-effective public school facilities.

Massachusetts School Building Authority

Deborah B. Goldberg

State Treasurer and Receiver-General

Chairperson

James A. McDonald

Chief Executive Officer

Jack McCarthy

Executive Director



About Us, Leadership & Organization



Board of Directors - Membership



Deborah Goldberg

Chairperson of the MSBA, Treasurer and Receiver General of the Commonwealth



Anne Brockelman
Appointed Member, Senior Associate, Perry Dean Rogers Partners Architects (PDR)



Sean Cronin
Designee of the Secretary of Administration and Finance



Sheila Vanderhoef
Appointed Member, Town Administrator, Town of Eastham



Matt Deninger
Designee of the Commissioner of Education



Terry Kwan
Appointed Member, Former teacher/School Committee member



Greg Sullivan
Appointed Member, Former MA Inspector General



Board of Directors - Duties

- Oversee the general administration and operations of the MSBA
- Vote at Board Meetings
- Oversee progress of MSBA-funded school projects and other activities in Subcommittees of the Board
- Review and approve proposed projects and determine the amounts of any grants to be awarded
- Review and approve the MSBA's annual operating and capital budgets
- Review and approve debt financings
- Review and approve MSBA regulations and policies

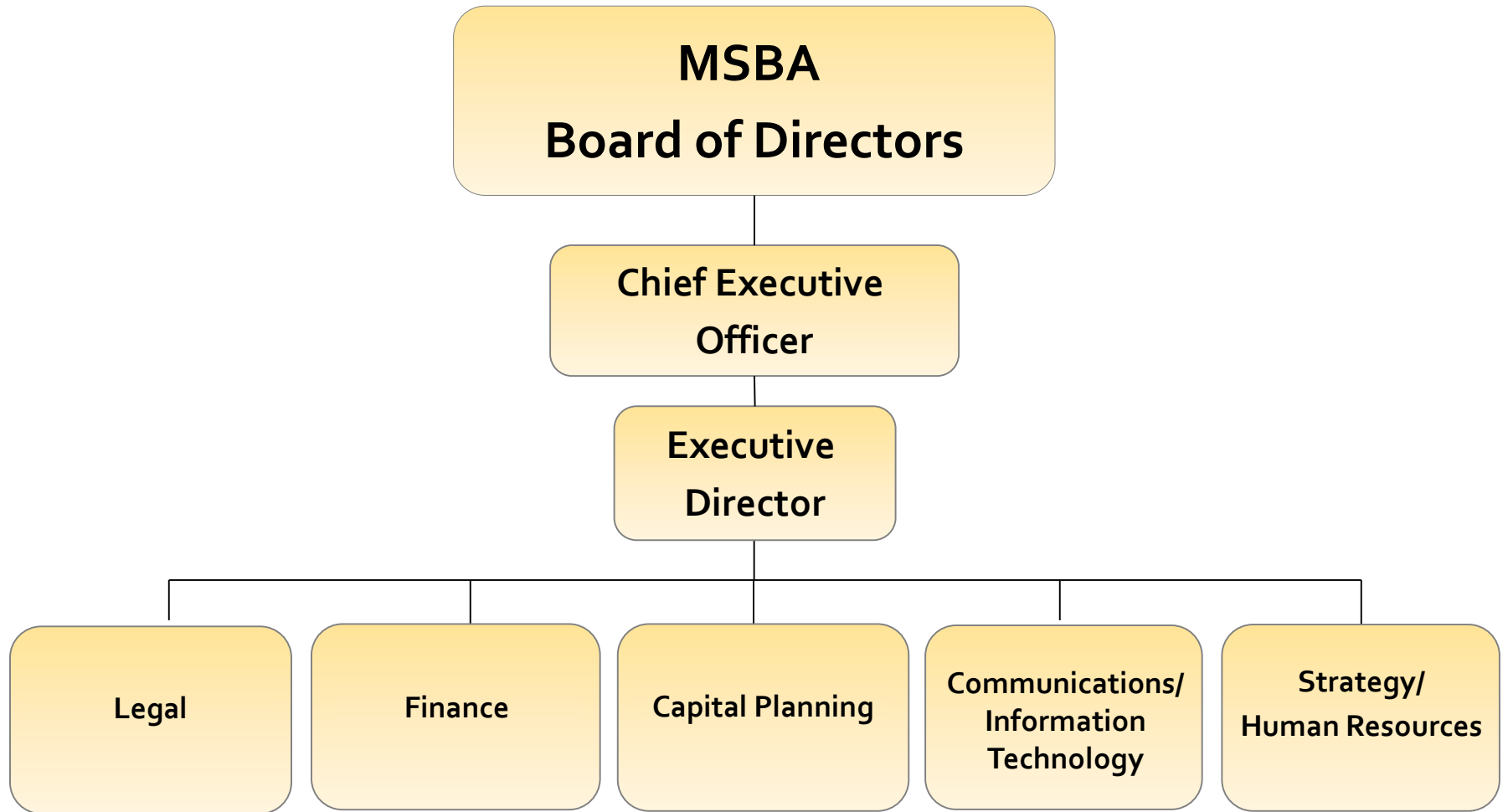


Board of Directors - Subcommittees

- **Facilities Assessment Subcommittee**
 - Reviews district presentations regarding proposed projects and provides feedback to districts before a project is presented to the full Board for approval
- **Administration, Operations and Finance**
 - Reviews and evaluates the MSBA's annual budget, operations, investments, bond deals, and other finance related business
 - Serves as the formal human resource policy and personnel compensation committee for the MSBA
- **Project Management Subcommittee**
 - Reviews final audit appeals by districts for MSBA projects
 - Met frequently when the MSBA was clearing the audit backlog that existed under the former program



MSBA Organizational Structure



Massachusetts School Building Authority

Deborah B. Goldberg

State Treasurer and Receiver-General

Chairperson

James A. McDonald

Chief Executive Officer

Jack McCarthy

Executive Director



2016 School Survey



2016 School Survey - What is it?

- The school survey is a general facility assessment meant to establish a baseline for all of the Commonwealth's schools and to help the MSBA understand how the needs of individual districts fit within the statewide spectrum of need.
- It is essential that the MSBA successfully performs these periodic surveys in order to meet our enabling legislation.
- Previously completed in 2005 and 2010.
- The 2016 assessment occurred from September 2016 through January 2017.



2016 School Survey - Key Findings

Size of Schools

- **Review of 1,419 assessed schools shows little evidence of widespread overcrowding** with most of space needs being met through the use of permanent space. A small percentage (~**1.2%**) of assessed classrooms are in **temporary spaces**.
- Of the more than **48,348 classrooms** assessed, only **605** are located in **temporary spaces**.
- **98 schools (7%)** have more than **10%** of their **classroom space** in **temporary spaces**.



2016 School Survey - Key Findings

Enrollment Trends

- During the 2010 survey report period, there was a **3.3%** statewide **decline** in K-12 public school **enrollment** from 2004-2005 school year (approximately **900,500** students). Since then, enrollment **declined** roughly **1.6%** statewide to approximately **886,000 students** in 2015-2016.



2016 School Survey - Key Findings

School Rating Summary

Massachusetts school buildings performed well in
primary scoring matrices, which **rated:**

- **Building Conditions:** An overall rating for the general conditions of a school facility's major systems.
- **General Environment:** An overall rating that reflects the school building's environment.
- **Capacity Utilization:** An overall rating that reflects the school building's utilization.



2016 School Survey - Key Findings

Number of Schools & Total Square Footage

- **1,859** public schools
- **1,695** schools evaluated
- **886,074** students
- **330** school districts
- **1,773** school-related permanent buildings
- **173,508,438** gross square feet

Age of Schools

- Since 2000, **58.8%** of approximately **173 million** existing **square feet** of school facility space has been **newly built or renovated**.
- **131 schools** (approximately 8%) are **over 100 years old**. **16** are in the **MSBA grant program**.

For more information, please visit our website at http://www.massschoolbuildings.org/programs/needs_survey

Massachusetts School Building Authority

Deborah B. Goldberg

State Treasurer and Receiver-General

Chairperson

James A. McDonald

Chief Executive Officer

Jack McCarthy

Executive Director



The Current Program Process & Our Capital Pipeline

- **Statements of Interest Overview**
- **A Look Ahead - 2017**



2017 Statements of Interest

2017 

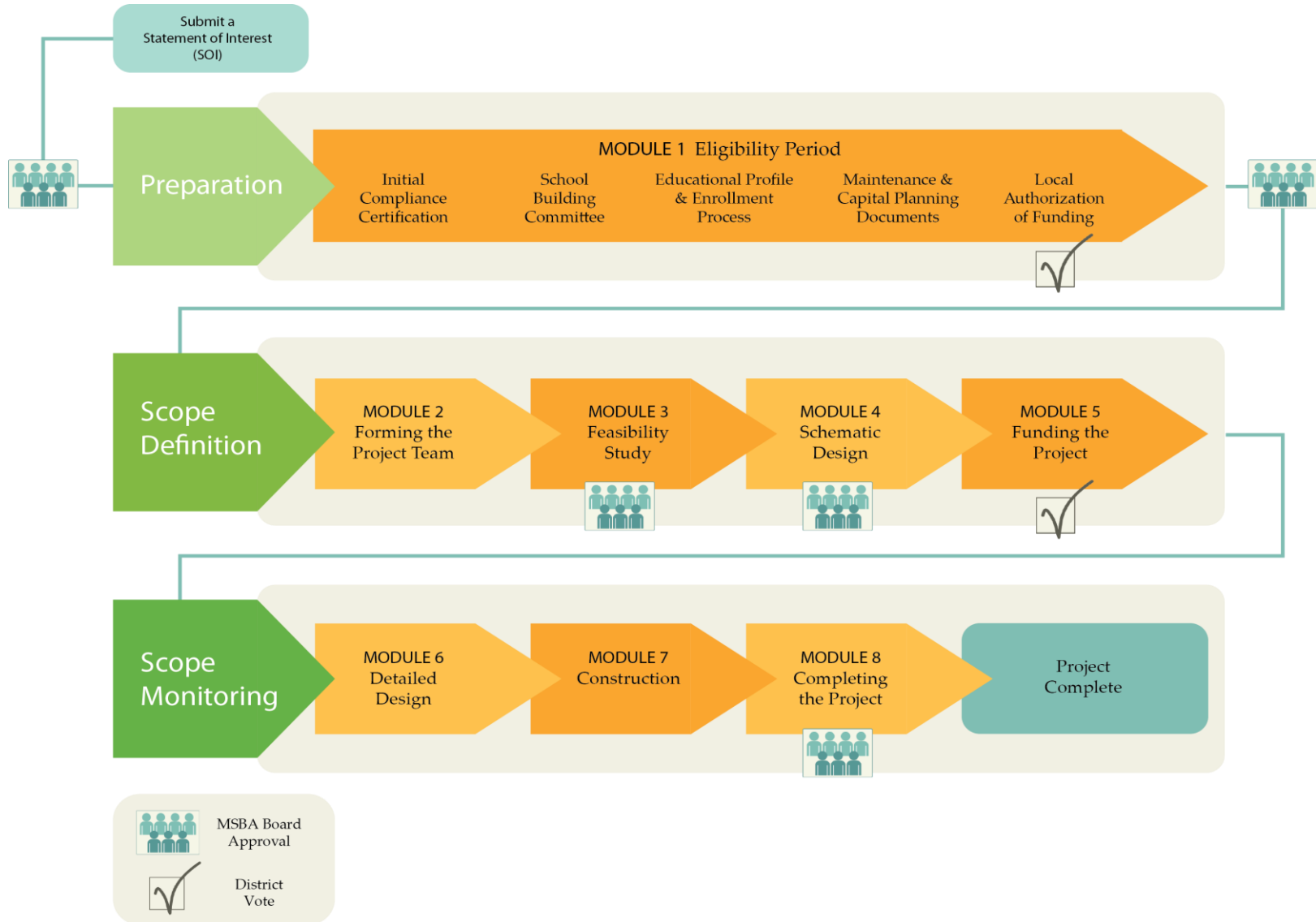
**Statement of Interest
Submittal Period**

CLOSING DATES:

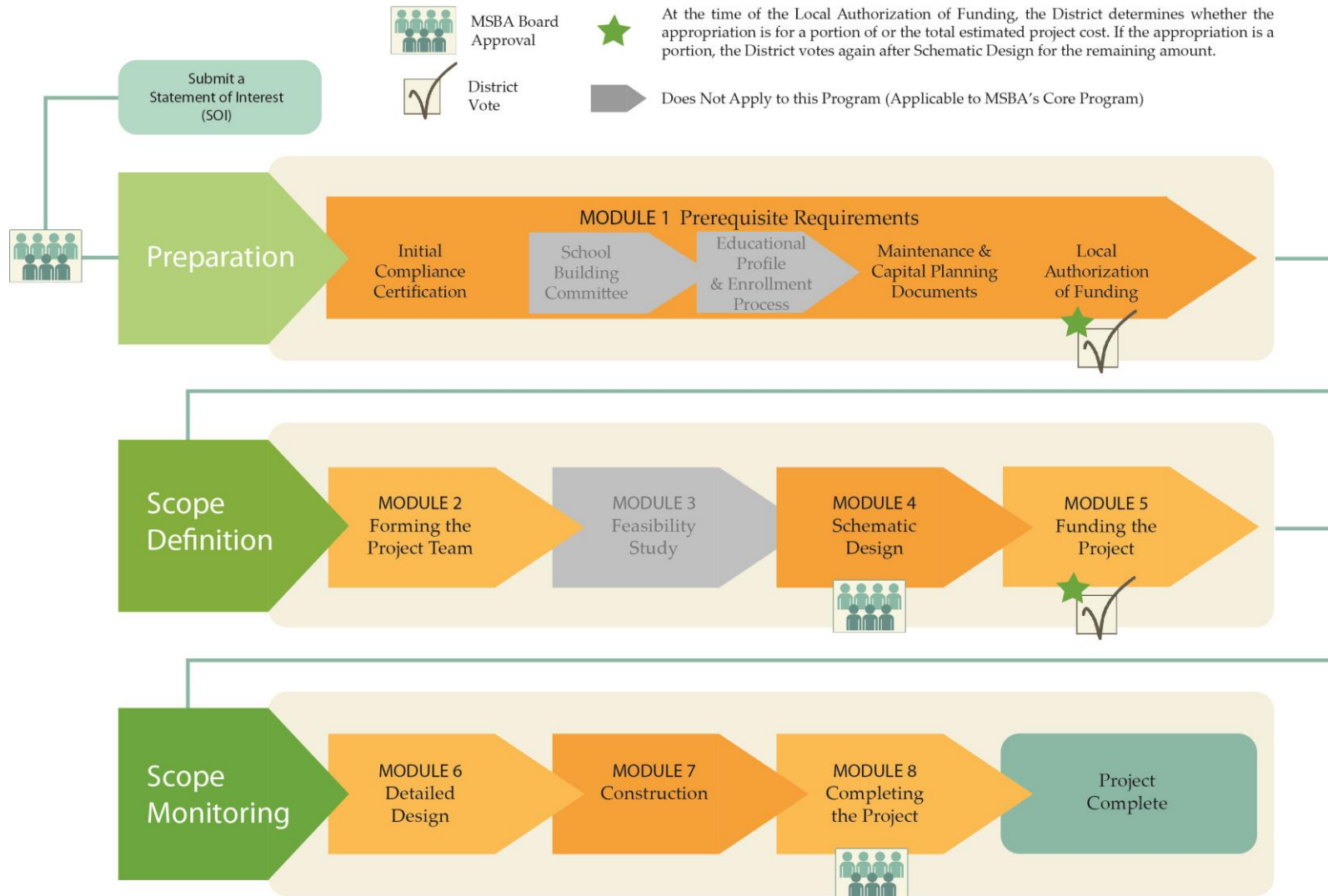
- **Accelerated Repair Program:** The SOI closing date for districts submitting for consideration in the Accelerated Repair Program (“ARP”), which is primarily for the repair and/or replacement of roofs, windows/doors, and/or boilers in an otherwise structurally sound facility closed on **Friday, February 17, 2017**.
 - 36 projects from 20 districts were invited into the program at our May and June 2017 Board Meetings.
- **Core Program:** The SOI closing date for districts submitting for consideration in the Core Program was **Friday, April 7, 2017**. The Core Program is primarily for projects beyond the scope of the Accelerated Repair Program, including extensive repairs, renovations, addition/renovations, and new school construction.
 - Invitations to our Core Program will be voted on at our December 13, 2017 Board Meeting.



Core Program Process Overview



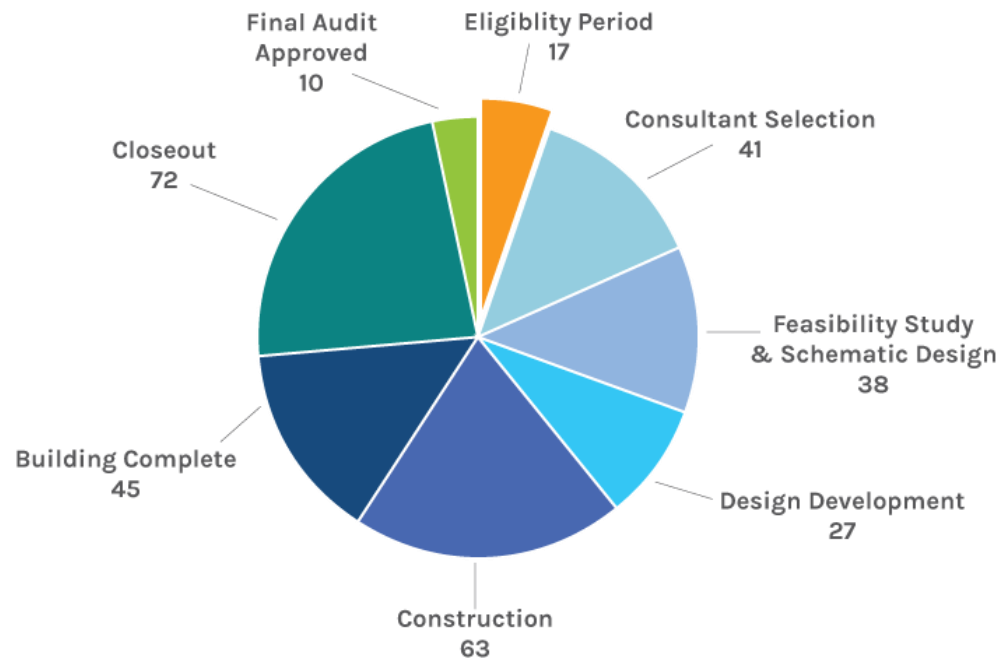
Accelerated Repair Program Process Overview





Current Project Status

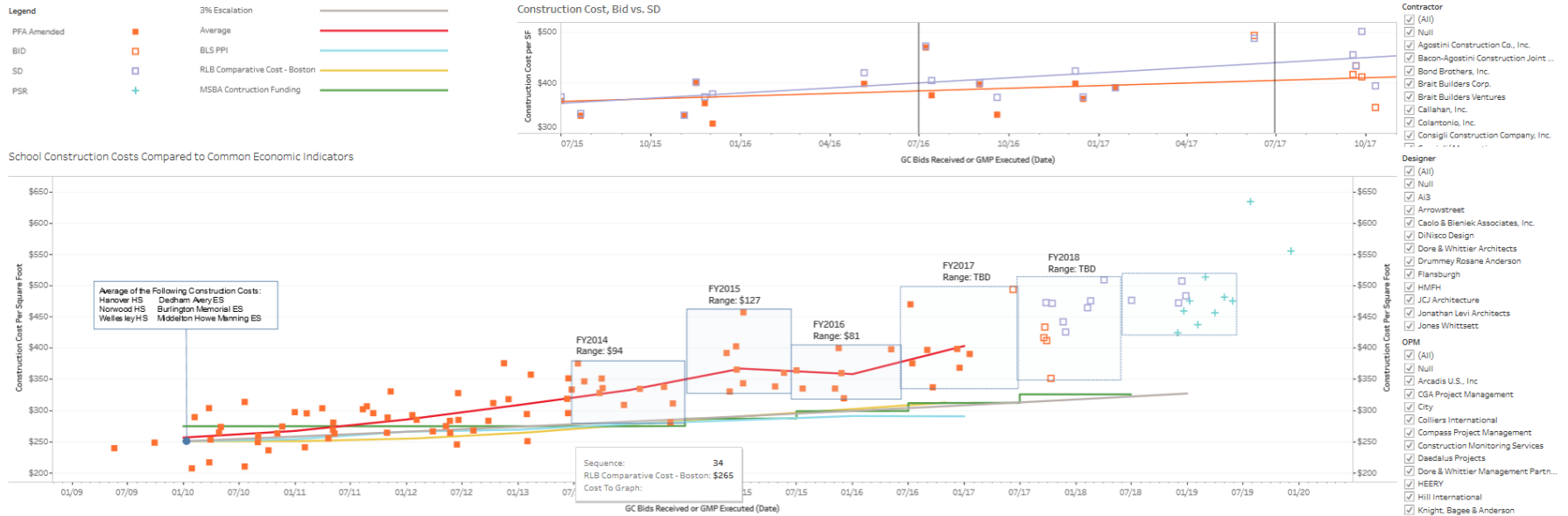
A total of 313 projects that have received invitations from the Board of Directors (“Board”) to collaborate with the Massachusetts School Building Authority (“MSBA”) are currently in the MSBA’s Eligibility Period and Capital Pipeline. The summary chart provides the number of projects in Eligibility Period and each phase of the Capital Pipeline. For a detailed look at the Capital Pipeline projects, please go to www.massschoolbuildings.org/building and select “Capital Pipeline Status Chart”.





School Construction Costs

The MSBA staff has published an interactive tool with bid data starting in fiscal year 2009, as well as projected estimates, for new construction projects.



For more information, please visit our website at <http://info.massschoolbuildings.org/TabPub/TableauCostData.aspx>



A Few Achievements

- \$12.9 billion in payments to cities, towns and regional school districts
- The MSBA's fully-funded Commissioning process, has a total value of over \$29.3 million in work orders
- We have completed final audits of 1,167 projects, totaling over \$18.7 billion in submitted costs
- Since our inception, the MSBA has participated in, or is currently working on, over 600 projects state-wide
- Currently there are a total of 96 districts, representing 220 projects, either active or completed in the Accelerated Repair Program





A Few More Achievements

- Through partnering with districts, we have improved learning facilities for over 600,000 students across the Commonwealth
- We developed a data based enrollment projection methodology in order to build right-size schools
- We have completed Needs Surveys in 2005 and 2010 and are finalizing data for 2016. Need Surveys are conducted to assess the condition of all of the elementary and secondary public schools across the Commonwealth





Stay Updated on the MSBA



- Visit us online at www.MassSchoolBuildings.org



-  Like us on Facebook



- Follow us on Twitter (@MASS_sba)

Massachusetts School Building Authority

Deborah B. Goldberg

State Treasurer and Receiver-General

Chairperson

James A. McDonald

Chief Executive Officer

Jack McCarthy

Executive Director



Questions?

Contact: Matt Donovan

Director of Administration and Operations

Matt.Donovan@massschoolbuildings.org