

Massachusetts School Building Authority

CAPITAL PLANNING PROJECT OVERVIEW REPORT

April 3, 2026

TABLE OF CONTENTS

Capital Pipeline Overview	2-4
Statements of Interest (SOIs)	5
Core Program	6-23
Eligibility Period	6-8
Consultant Selection	9-10
Feasibility Study	11
Schematic Design	12
Commissioning	13-14
Design Development	15
Summary of Bid Data	16-17
Construction	18-21
Closeout	22
Post Occupancy Evaluation	23
Accelerated Repair Program	24-28
Project Variances	29-31

Appendices

(A) Project Status List

(B) 2025-27 Estimated Bid Dates

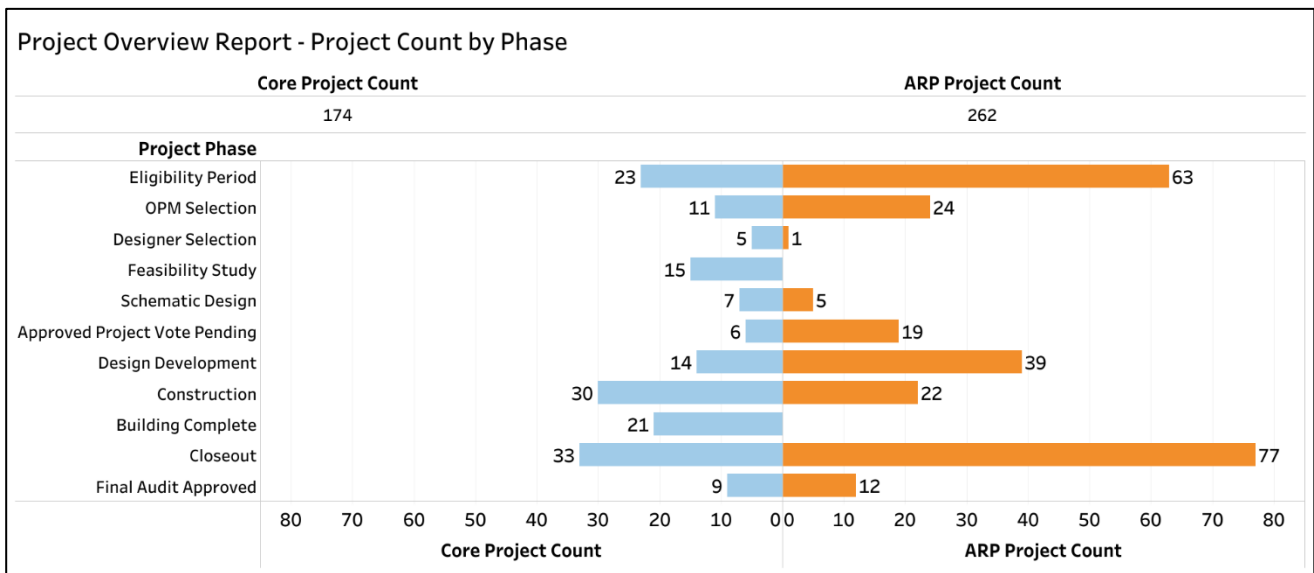
(C) School Construction Costs compared to Common Economic Indicators

(D) Construction Status Report

CAPITAL PIPELINE OVERVIEW

Status of Current Projects

A total of 436 projects that have received invitations from the Board of Directors (“Board”) to collaborate with the Massachusetts School Building Authority (“MSBA”) are currently in the MSBA’s Eligibility Period and Capital Pipeline. The 436 projects include 174 projects in the Core Program and 262 projects in the Accelerated Repair Program (“ARP”). The summary chart provides the number of projects in Eligibility Period and each phase of the Capital Pipeline. Compared to the prior Project Overview Report, the project total has decreased by 2 projects to reflect the removal of 1 Core Program project and the removal of one Accelerated Repair Program project at the February 2026 Board meeting. For a detailed look at the Capital Pipeline projects, please go to www.massschoolbuildings.org/building and select “Capital Pipeline Status Chart”.



Capital Planning Updates:

The following activities are scheduled for FY 2026:

- The 2025 School Survey continues following the launch of school assessments beginning in November 2024. The MSBA has once again partnered with STV Inc., who visited 1,548 buildings on 1,446 campuses across the Commonwealth to assess the general condition of each building. Site visits were not conducted at schools in the MSBA’s Core Program pipeline unless construction had been completed. Each assessment evaluated several key factors, including: condition, capacity, maintenance, and educational environment. The report was posted to the MSBA website on January 30, 2026, with an interactive dashboard forthcoming.
- The MSBA has partnered with BVH Integrated Services, Inc., a Salas O’Brien Company (“BVH/Salas O’Brien”) to evaluate existing public K-12 schools to determine scope, schedule, and cost factors to convert existing buildings to heat pumps for heating and cooling within the Accelerated Repair Program (“ARP”). Throughout October 2024, BVH/Salas O’Brien conducted 18 site visits at schools of different typologies. BVH/Salas O’Brien also proposed recommendations for 2025 Statement of Interest heat pump questions. A report providing technical and programmatic recommendations to support heat

pump conversion projects within ARP was presented at the June 2025 Board of Directors meeting and posted to the MSBA's ARP webpage. Issuance of the report was also shared in Project Advisory 93. The report helped inform the first ARP heat pump invitations at the October 2025 Board of Directors meeting.

- Request for Responses (“RFR”) for a Post Occupancy Evaluation (“POE”) House Doctor Services Consultant was issued on November 5, 2025, with responses received on December 10, 2025. The objective of the RFR is to continue receiving professional “Post Occupancy Evaluation House Doctor” services to assist the MSBA in supporting and maintaining the MSBA’s Post Occupancy Evaluation Program. Staff provided an update for the Facilities Assessment Subcommittee on March 11, 2026, and anticipate requesting approval to execute a Master Service Agreement at the April 29, 2026, Board of Directors meeting.
- Request for Responses (“RFR”) for Education Program Review Services Consultants was issued on November 12, 2025, with responses received on December 12, 2025. The objective of the RFR is to receive professional “Educational Program Review” services to assist the MSBA in supporting, maintaining, and/or modifying current practices associated with educational program expectations and to provide a detailed review of educational program submittals from school districts during the Feasibility Study phase within the Core Program. Staff provided an update for the Facilities Assessment Subcommittee on March 11, 2026, and anticipate requesting approval to execute Master Service Agreements at the April 29, 2026, Board of Directors meeting.
- Request for Responses (“RFR”) for a Project Management Consultant was issued on December 3, 2025, with responses received on January 14, 2026. The objective of the RFR is to continue receiving project management services to assist the MSBA in conducting reviews of specifications, plans, project budgets and schedules submitted by public school districts and their consultants in support of the districts’ applications for MSBA funding, including providing ongoing review and monitoring of MSBA-approved projects currently under agreement with the MSBA or anticipating being under agreement with the MSBA, as well as to collect and record all necessary project data. Staff provided an update for the Facilities Assessment Subcommittee on March 11, 2026, and anticipate requesting approval to execute a Master Service Agreement at the April 29, 2026, Board of Directors meeting.
- MSBA Roundtables – Information for FY 2026 is listed below:
 - Superintendent Roundtable occurred on November 20, 2025 – Topic: Get the Word Out: The Communication Ground Rules of Local Ballot Questions
 - Joint Roundtable for OPMs, Designers, and Superintendents occurred on January 8, 2026 – Topic: Student Engagement in the Design and Building Process
 - Superintendent Roundtable information session occurred on January 27, 2026 – Topic: 2026 Statement of Interest Process
 - General Roundtable scheduled for May 21, 2026 – Topic: MSBA’s Green Schools Program
 - Designer Roundtable to be scheduled for fall 2026 – Topic: Pending
 - Owner’s Project Manager (“OPM”) Roundtable to be scheduled for fall 2026 – Topic: Pending
 - Commissioning Roundtable to be scheduled for fall 2026 – Topic: Pending

2026 Progress Report

- * Statements of Interest (“SOIs”) 2026
 - The 2026 submittal period opened on Monday, January 12, 2026. The deadline to file for consideration under the Core Program, only, is Friday, April 17, 2026.
 - Commencing in 2025, the ARP will have a biennial SOI opening (every two years) and will again be accepting SOIs for consideration in January 2027.
- * Eligibility Period – Core Program
 - Eight of the 22 2024 SOIs are currently in the Eligibility Period following their invitations at the December 13, 2024, Board of Directors meeting. Four SOIs are anticipating an invitation to Feasibility Study at the April 29, 2026, Board of Directors meeting. One SOI is anticipating

- removal from the Core Program at the April 29, 2026, Board of Directors meeting, which will increase the total removed SOIs to three.
- 15 of the 15 2025 SOIs are currently in the Eligibility Period following their invitations at the December 12, 2025, Board of Directors meeting.
 - * Consultant Selection – Core Program
 - One district completed its Owner’s Project Manager (“OPM”) selection since the last report and nine districts are tentatively scheduled to receive MSBA approval for selection of their OPM.
 - Four districts completed Designer selection since the last report while four districts are in the process of procuring a Designer.
 - * Feasibility Study/Schematic Design – Core Program
 - Eight districts are anticipating submittals for their Preferred Schematic Solutions between April 2026 and August 2026.
 - Six districts are anticipating submittals for their Project Scope and Budget Agreement authorizations between April 2026 and August 2026.
 - * Accelerated Repair Program
 - The 2025 ARP program is for the partial or full replacement of roofs, windows/doors, and heat pumps which includes 93 projects in 45 districts.
 - 32 projects representing the first commencement group completed initial documentation and received consultant assignments.
 - 32 projects representing the second commencement group are in the process of completing initial documentation before receiving consultant assignments.
 - 29 projects representing the final commencement group will begin the initial documentation phase on July 1, 2026.
 - * Construction Costs – Core Program
 - In 2026, 12 projects are scheduled to receive sub bids. Bids have been received for two projects.
 - * Substantial Completion – Core Program
 - 11 projects are scheduled to reach substantial completion in 2026
 - * Post Occupancy Evaluations
 - Staff have completed six post occupancy evaluations in FY 2026 and anticipate completing approximately two more this fiscal year.
 - Individual reports will be prepared for and shared with each evaluated school and the corresponding districts and consultants.

STATEMENTS OF INTEREST (SOIs)

2026 SOI Process

The 2026 SOI submittal period opened on January 12, 2026, for the Core Program only. Commencing in 2025, the Accelerated Repair Program (“ARP”) proceeded with biennial SOI openings (every two years) and will again be accepting SOIs for consideration in January 2027.

The deadline to file for consideration under the Core Program, which is intended for new construction, addition, and/or renovation projects, is Friday, April 17, 2026.

The table below lists the number of SOIs received and Invitations granted in calendar years 2008 through 2025.

Year	Total Number of SOIs Submitted	Number of Core Program SOIs Submitted	Number of Core Program Invitations	Number of Green Repair or Accelerated Repair Program SOIs Submitted	Number of Green Repair or Accelerated Program Repair Invitations	Number of SCILAB SOIs Submitted	Number of SCILAB Program Invitations
2008	431	425	104	6	6		
2009	237	206	41	31	31		
2010	224	202	19	22	22		
2011	371	184	18	187	149		
2012	280	198	11	69	36	13	11
2013	201	123	17	78	47		
2014	229	110	18	119	51		
2015	158	97	26	61	44		
2016	156	89	17	67	49		
2017	156	83	15	73	36		
2018	130	70	12	60	34		
2019	144	61	11	83	42		
2020	161	71	15	90	25		
2021	118	58	17	60	28		
2022	121	54	10	67	33		
2023	63	63	19	N/A	N/A		
2024	119	47	22	72	70		
2025	126	27	15	99	93		

2008: MSBA launched the annual filing period.

2011: MSBA opened the annual filing period twice, which included a dedicated opening for interest in the Green Repair Program and the annual opening.

2012: MSBA’s annual filing period captures interest in the newly created Accelerated Repair Program, the 2012 Science Laboratory Initiative and the Core Program.

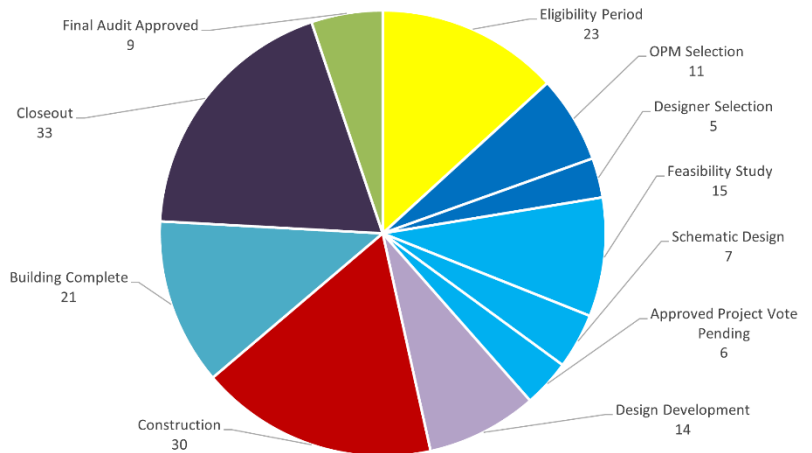
2023: MSBA’s annual filing period opened for Core Program only. Please refer to the October 26, 2022, Board of Directors Memorandum, which outlined the recommendation to temporarily pause the Accelerated Repair Program and not accept new SOIs in 2023.

CORE PROGRAM

Status of Core Program Projects

Currently, there are 174 Core Program projects in the MSBA’s Eligibility Period and Capital Pipeline. Compared to the prior Project Overview Report, the project total has decreased by 1 project.

- 67 projects are in the early phase of the grant program and have not yet secured funding authorizations for the full project.
- 44 projects have secured full project funding and are in Design Development or Construction.
- 63 projects are in Building Complete, Closeout, or Final Audit Approved phases.



ELIGIBILITY PERIOD

There are 23 districts in Eligibility Period (table below) and 5 of those districts have secured their local funding.

An agreed-upon enrollment is a key pre-requisite for the MSBA to commence a Feasibility Study with a district. To begin the enrollment projection process, a district must file enrollment information utilizing the MSBA’s online enrollment projection tool.

SOI Year	District	School	Eligibility Period Commencement Date	30 days	60 days	90 days			180 days		270 days	Date of Invitation to Feasibility Study (Estimated)
				ICC	SBC	Online Enrollment Projection Info	Ed Profile Questionnaire	Ch. 74 Viability Submission	Maintenance Documents	Enrollment Certification	Local Authorization	
2025	Arlington	Ottoson MS	March 2, 2026	X				N/A				
2025	Avon	Ralph D. Butler ES	May 1, 2026					N/A				
2024	Boston	Ruth Batson Academy	July 1, 2025	X	X	X	X	N/A	X	X	X	April 2026
2025	Boston	Madison Park HS	July 1, 2026									

SOI Year	District	School	Eligibility Period Commencement Date	30 days	60 days	90 days			180 days		270 days	Date of Invitation to Feasibility Study (Estimated)
				ICC	SBC	Online Enrollment Projection Info	Ed Profile Questionnaire	Ch. 74 Viability Submission	Maintenance Documents	Enrollment Certification	Local Authorization	
2025	Cohasset	Cohasset HS	April 1, 2026					N/A				
2024	Duxbury	Alden School	June 2, 2025	X	X	X	X	N/A	X	X	X	April 2026
2025	Falmouth	Lawrence School	March 2, 2026	X				N/A				
2025	Foxborough	Charles Taylor ES	May 1, 2026					N/A				
2025	Gill-Montague RSD	Sheffield ES	May 1, 2026					N/A				
2025	Holliston	Holliston HS	June 1, 2026					N/A				
2024	Ipswich	Doyon Memorial School	July 1, 2025	X	X	X	X	N/A	X	X	X	April 2026
2025	Mohawk Trail RSD	Mohawk Trail RMHS	July 1, 2026					N/A				
2025	Norfolk	Freeman-Kennedy School	April 1, 2026					N/A				
2025	North Reading	J. Turner Hood ES	June 1, 2026					N/A				
2024	Pioneer Valley RSD	Northfield ES	June 2, 2025	X	X	X	X	N/A	X			Removal anticipated April 2026
2024	Shawsheen Valley RVTSD	Shawsheen Valley RVTHS	August 1, 2025	X	X	X	X	X	X			June 2026
2024	South Middlesex RVTSD	Keefe THS	August 1, 2025	X	X	X	X	X	X			June 2026
2025	Seekonk	Dr. Kevin M. Hurley MS	July 1, 2026					N/A				
2024	Springfield	White Street ES	June 2, 2025	X	X	X	X	N/A	X	X	X	April 2026
2025	Springfield	Washington Street ES	June 1, 2026					N/A				
2025	Weston	Weston HS	April 1, 2026					N/A				
2024	Whittier RVTSD	Whittier RVTHS	August 1, 2025	X	X	X	X	X	X		X	June 2026

SOI Year	District	School	Eligibility Period Commencement Date	30 days	60 days	90 days			180 days		270 days	Date of Invitation to Feasibility Study (Estimated)
				ICC	SBC	Online Enrollment Projection Info	Ed Profile Questionnaire	Ch. 74 Viability Submission	Maintenance Documents	Enrollment Certification	Local Authorization	
2025	Winchester	Francis J. Muraco ES	March 2, 2026	X				N/A				

CONSULTANT SELECTION

Owner's Project Manager Selection

After the district has completed all Eligibility Period requirements and has received a Board Invitation to Feasibility Study, the district procures an OPM. Since the last report, one district has completed Owner's Project Manager ("OPM") selection (shaded in the table below). Currently, there are eleven districts in the Capital Pipeline in the process of procuring an OPM.

District	School	Anticipated Selection
Peabody	Veterans Memorial High School	March 2026
Medfield	Dale Street Elementary School	April 2026
Pittsfield	Crosby Elementary School	April 2026
Plymouth	Hedge Elementary School	May 2026
Shrewsbury	Shrewsbury Senior High School	May 2026
Natick	Memorial Elementary School	June 2026
Milton	Cunningham School	July 2026
West Springfield	John Ashley Elementary School	July 2026
Dennis-Yarmouth RSD	Marguerite E. Small Elementary School	August 2026
Norwell	Norwell High School	September 2026
Athol-Royalston	Athol High School	TBD
Upper Cape Cod RVTSD	Upper Cape RVTHS	TBD

Designer Selection

After a district has selected and executed a contract with an OPM, the district selects a Designer by utilizing the MSBA's Designer Selection Panel ("DSP"). Since the last report, four districts completed Designer selection (shaded in the table below). There are currently four districts in the Capital Pipeline that are in the process of procuring a Designer.

District	School	Anticipated Selection
Framingham	Hemenway Elementary School	February 2026
Westford	Col. John Robinson Elementary School	February 2026
Boston	Shaw-Taylor Elementary School	March 2026
Everett	Everett High School	March 2026
Worcester	Burncoat Senior High School	April 2026
Triton RSD	Triton Regional High School	April 2026
Haverhill	John G. Whittier Middle School	May 2026
Peabody	Peabody Veterans Memorial High School	TBD

For additional information on the selected consultant teams, see Appendix A.

FEASIBILITY STUDY

Once a district has procured an OPM and a Designer, the district and the district’s consultants must complete two Feasibility Study submittals, the Preliminary Design Program, and the Preferred Schematic Report, prior to Board consideration to proceed into Schematic Design. Based on the most recent data and schedules provided to the MSBA by districts, the MSBA anticipates that eight districts will appear before the Board for their Preferred Schematic Design authorizations at the April 2026, June 2026, and August 2026 Board meetings. An additional seven districts are in Feasibility Study.

District	School	Anticipated PS Board Date
Brockton	Brockton High School	June 2026
Chelmsford	Col. Moses Parker Middle School	June 2026
Leicester	Leicester High School	June 2026
Manchester-Essex RSD	Essex Elementary School	June 2026
Medford	Medford High School	August 2026
New Bedford	Charles S. Ashley Elementary School	August 2026
Northborough	Marguerite E. Peaslee Elementary School	August 2026
South Hadley	Mosier Elementary School	August 2026

SCHEMATIC DESIGN

Prior to consideration by the Board for Project Scope and Budget Agreement authorization, a district must submit a Schematic Design to the MSBA for review. Based on the most recent data and schedules provided to the MSBA by districts, the MSBA anticipates that six districts will appear before the Board for Project Scope and Budget Agreement authorizations at the April 2026, June 2026, and August 2026 Board Meetings. There are no additional districts in Schematic Design.

District	School	Anticipated PS&B Board Date
Franklin County RVTSD	Franklin County Technical High School	April 2026
Wrentham	Charles E. Roderick Elementary School	April 2026
Marlborough	Richer Elementary School	June 2026
Blackstone-Millville RSD	Blackstone-Millville Regional High School	August 2026
Chicopee	Anna E. Barry Elementary School	August 2026
Needham	Pollard Middle School	August 2026

COMMISSIONING

The MSBA assigns a Commissioning Consultant after a district has secured local funding for the Board approved project. Since the last report, the MSBA has assigned Commissioning Consultants for seven additional projects which are presented in the table below.

District	School	Program	Estimated Const. Cost (million)*	Commissioning Consultant	Contract Amount
Chelsea	Clark Avenue	Re-Cx	\$0.00	Colliers Project Leaders NE	\$67,150
Hamilton-Wenham	Regional HS	ARP	\$9.24	SMRT	\$53,430
Holyoke	2 Schools	ARP	\$9.73	Terva Engineering	\$77,660
Lexington	Lexington HS	Core	\$534.10	SMRT	\$435,820
Marlborough	Richer ES	Re-Cx	\$0.00	Horizon Engineering Associates	\$66,034
Millis	Millis HS	Core	\$98.30	BVH/Sala's O'Brien	\$146,553
Newton	Cabot ES	Re-Cx	\$0.00	Bard, Rao +Athanas Consulting Engineers	\$59,000

*Re-commissioning assignments result in no additional estimated Construction Costs. Estimated Construction Costs previously captured with the original Commissioning Consultant assignment.

To date, the MSBA has executed 684 commissioning consultant contracts, totaling \$55.2 million in commissioning fees, for 916 projects at 731 schools, many of whom have been invited to the Capital Pipeline multiple times. Construction budgets for projects commissioned totaled \$20.6 billion. To date, 490 work orders have been completed.

The table below represents the status of commissioning assignments sorted by the fiscal year in which the commissioning work orders were issued.

Fiscal Year	No. Work Orders Issued	Value of Work Orders Issued	Total Invoiced*	Percent Complete
FY2010	31	\$4,231,376	\$4,273,277	100%
FY2011	95	\$6,132,890	\$6,058,460	99%
FY2012	52	\$4,373,944	\$4,386,520	100%
FY2013	55	\$3,364,697	\$3,408,897	100%
FY2014	47	\$2,604,062	\$2,541,165	98%
FY2015	44	\$2,277,711	\$2,273,711	100%
FY2016	44	\$3,385,137	\$3,333,748	99%
FY2017	37	\$2,290,661	\$2,248,851	98%
FY2018	44	\$4,138,550	\$4,137,049	100%
FY2019	39	\$3,604,720	\$3,479,009	97%
FY2020	42	\$3,080,166	\$2,998,825	97%

Fiscal Year	No. Work Orders Issued	Value of Work Orders Issued	Total Invoiced*	Percent Complete
FY2021	12	\$1,524,360	\$1,293,860	85%
FY2022	36	\$3,969,566	\$2,820,029	71%
FY2023	29	\$2,537,001	\$1,798,408	71%
FY2024	29	\$2,633,366	\$1,273,401	48%
FY2025	11	\$1,797,005	\$208,901	12%
FY2026	37	\$3,266,377	\$128,504	4%
Total	684	\$55,211,589	\$46,662,615	

*Includes approved additional services over value of Work Order

DESIGN DEVELOPMENT

After a district has secured local funding and has entered into a Project Funding Agreement (“PFA”) with the MSBA, the district enters the Design Development Phase. Currently, there are 53 projects in the Design Development Phase with a total estimated construction cost of approximately \$2.43 billion. Of those 53 projects, 39 are ARP Projects and 14 are Core Program Projects. The 14 Core Program Projects in Design Development have a total estimated construction cost of approximately \$2.34 billion and are listed below.

Elementary School Districts	Middle School Districts	High School Districts	Other Grade Configurations
East Bridgewater (PK-2) Leominster (K-5) Littleton (PK-2) Reading (PK-5) Stoughton (K-5) Wilmington (PK-5)	Canton (5-8) Longmeadow (6-8)	Berkshire Hills (9-12) Lexington (9-12) North Attleborough (9-12) Revere (9-12) South Shore VT (9-12)	Millis (6-12)

District Design Submittals

During the Design Development phase, districts will submit three design submittals (Design Development, 60% Construction Documents, and 90% Construction Documents) for the MSBA to review. MSBA staff reviews the documents to ensure the project is still in compliance with the PFA. The chart below indicates the number of submittals received and reviewed by the MSBA in each fiscal year.

Fiscal Year	DD Reviews	60% Reviews	90% Reviews	Total Reviews
FY2010	5	0	0	5
FY2011	21	24	20	65
FY2012	12	24	28	64
FY2013	20	20	19	59
FY2014	15	13	14	42
FY2015	6	12	13	31
FY2016	10	10	8	28
FY2017	11	10	12	33
FY2018	10	11	9	30
FY2019	17	16	10	43
FY2020	12	16	18	46
FY2021	6	11	19	36
FY2022	15	9	10	34
FY2023	12	19	13	44
FY2024	11	5	6	22
FY2025	9	15	12	36
FY2026	6	8	8	23
Totals	198	223	219	641

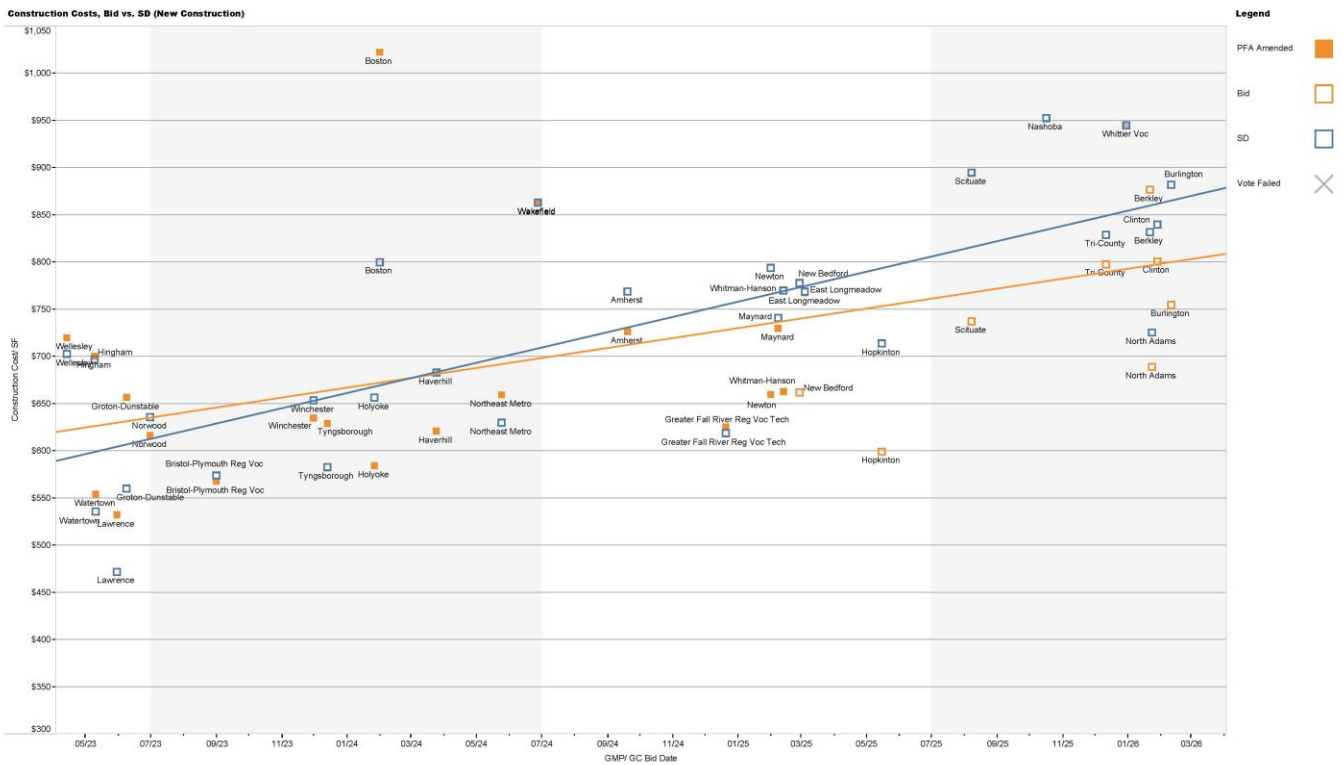
SUMMARY OF BID DATA

Based on the most recent data and schedules provided by districts, 12 projects are scheduled to receive sub-bids in 2026 while eight projects are scheduled in 2027 and one project is scheduled in 2028. The total number of projects has increased since the last report following four Project Scope and Budget Agreement approvals at the February 25, 2026, Board of Directors meeting and one anticipated removal at the April 29, 2026, Board of Directors meeting.

Year	Number of Projects	Design Basis for Enrollment	Project Budget	Construction Budget	Construction Range
2026	12	9,615	\$2.30 billion	\$1.86 billion	\$701 - \$1,033
2027	8	6,736	\$1.92 billion	\$1.54 billion	\$666 - \$1,335
2028	1	1,000	\$0.44 billion	\$0.37 billion	\$1,051
Grand Total	21	17,351	\$4.66 billion	\$3.77 billion	

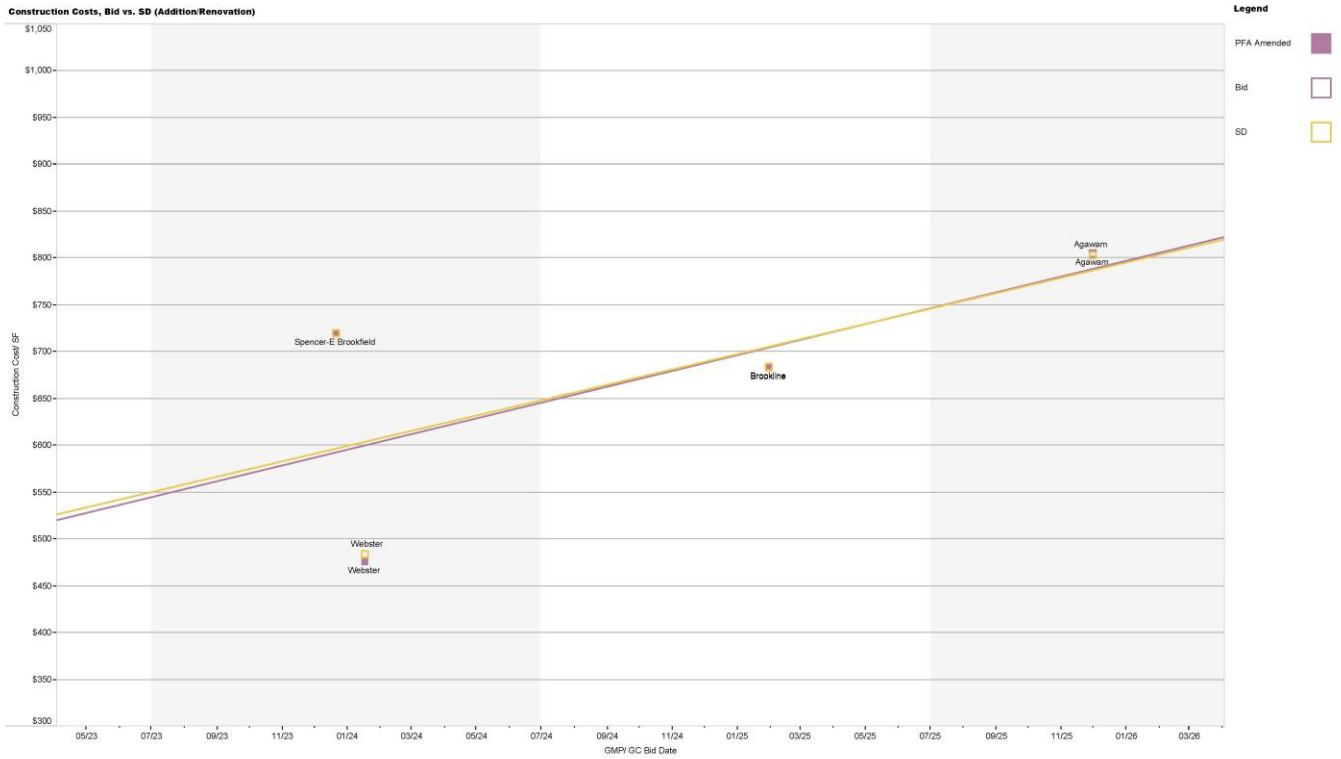
Note: These numbers are based on preliminary information received from the District and are subject to further review and calculation. Data is shown only for projects which have Project Scope and Budget Agreement approval by the Board. For additional information on the bid schedules of these projects, please see Appendix B.

The graph below plots Schematic Design Construction Estimates and Construction Bid Results for new construction projects from April 2023 to present. The projects are presented based on their dates of DBB bids or GMP executions. The Orange Line is a trend line for Bid Costs and the Blue Line is a trend line for Schematic Design Construction Estimates. One Project, Burlington Fox Hill ES, has been added since the last report prepared for the February 25, 2026, Board of Directors meeting.



A fully interactive version of the New Construction graph is available on the MSBA website, here: <http://info.massschoolbuildings.org/TabPub/TableauCostData.aspx>.

The graph below plots Schematic Design Construction Estimates and Construction Bid Results for addition/renovation projects from April 2023 to present. The projects are presented based on their dates of DBB bids or GMP executions. The Purple Line is a trend line for Bid Costs and the Yellow Line is a trend line for Schematic Design Estimates. *No projects have been added since the last Project Overview Report for the February 25, 2026, Board of Directors meeting.*



A fully interactive version of the Addition/Renovation graph is available on the MSBA website, here: <http://info.massschoolbuildings.org/TabPub/TableauCostData.aspx>.

CONSTRUCTION

When a district with a Design-Bid-Build Construction project issues a Notice to Proceed, or when a Construction Manager At-Risk project has received bids for the concrete foundation package, the project is advanced to the Construction Phase. Currently, there are 52 projects in the Construction Phase with a total estimated construction cost of \$4.21 billion. Of those 52 projects, 22 are ARP Projects and 30 are Core Program Projects; however, this does not include the 21 projects that have reached substantial completion and are currently in the Building Complete Phase. The 30 Core Program Projects have a total estimated construction cost of \$4.14 billion and are listed below.

Elementary School Districts	Middle School Districts	High School Districts	Other Grade Configurations
Amherst (K-5) Berkley (PK-4) Burlington (K-5) Hopkinton (2-4) Maynard (PK-3) New Bedford (K-5) Newton (K-5) North Adams (PK-6) Quincy (K-5) Scituate (PK-5)	Clinton (5-8) Haverhill (5-8) Holyoke (6-8) Lynn (6-8) Whitman-Hanson (5-8)	Agawam (9-12) Bristol-Plymouth (9-12) East Longmeadow (9-12) Greater Fall River VT (9-12) Lowell (9-12) Nashoba (9-12) Nauset RSD (9-12) Northeast Metro VT (9-12) Spencer-East Brookfield (9-12) Stoneham (9-12) Tri County VT (912) Wakefield (9-12) Watertown (9-12)	Brookline (PK-8) Webster (6-12)

Amendment to the Project Funding Agreement (PFA)

Upon receipt of construction bids or the execution of a GMP, a district submits the Contractor's Schedule of Values to the MSBA. MSBA staff will collaborate with the district to reconcile the construction costs from the schedule of values against the estimated construction budget. Afterwards, an amendment to the PFA is executed to reflect the bids received for those projects. The chart, shown below, provides the number of amendments to PFAs listed by fiscal year.

Fiscal Year	Total Amendments
FY2012	30
FY2013	31
FY2014	31
FY2015	17
FY2016	22
FY2017	8
FY2018	15
FY2019	13
FY2020	10
FY2021	17
FY2022	20
FY2023	7
FY2024	32
FY2025	14
FY2026	15

Substantial Completion

In 2025, 10 projects were scheduled to reach Substantial Completion. They are listed in the table below. The MSBA has received seven executed certificates of substantial completion. Staff will continue to monitor these projects for updates.

Project	Enrollment	Contractor	OPM	Designer	Substantial Completion Date*	Building Construction Completion Date**	Variance (days)
Arlington High School	1,755	Consigli Construction Company	Skanska USA Building, Inc.	HMFH Architects, Inc.	14-Feb-25	14-Feb-25	-
Boston Carter Development Center	60	Bond Building Construction	Hill-LiRo, Corp.	Perkins + Will	20-Jun-2025	25-Aug-25	66 behind
Tyngsborough Middle School	480	Fontaine Brothers, Inc.	Leftfield, LLC	JCJ Architecture, PC	25-Jul-25	25-Jul-25	-
Fitchburg Crocker Elementary School	845	Fontaine Brothers, Inc.	Colliers Project Leaders LLC	SAAM	5-Jun-25	27-Jun-25	22 behind
Lawrence Oliver Partnership School	1,000	Consigli Construction Company	Accenture, PLC	Symmes Maini & McKee Associates, Inc.	10-Jun-25	10-Jun-25	-
Norwood Coakley Middle School	1,070	W.T. Rich	Vertex (Compass)	Ai3 Architects	18-Aug-25	25-Aug-25	7 behind
Lawrence Leahy Elementary School	1,000	J&J Contactors, inc.	Atlantic Construction and Management, Inc.	Mount Vernon Group Architects, Inc.	17-Jun-25	25-Aug-25	69 behind
Holyoke Peck Middle School	550	Fontaine Brothers, Inc.	Accenture, PLC	Mount Vernon Group Architects, Inc.	15-Aug-25		
Winchester Lynch Elementary School	520	Brait Builders Corp.	Hill-LiRo, Corp.	Tappe Architects, Inc.	2-Sep-25		
Nauset Regional High School	905	Brait Builders Corp.	Flansburgh Associates	CHA Consulting Inc.	1-Oct-25		

*As defined in the executed Construction Contract, once provided to the MSBA

**Date on the Certificate of Substantial Completion, once provided to the MSBA

In 2026, 11 projects are scheduled to reach Substantial Completion. They are listed in the table below. Staff will monitor these projects for updates.

Project	Enrollment	Contractor	OPM	Designer	Substantial Completion Date*	Building Construction Completion Date**	Variance (days)
Watertown High School	720	Brait Builders Corp.	The Vertex Companies, LLC	Ai3 Architects LLC	02-Mar-26		
Haverhill Consentino	1,080	Brait Builders Corp.	Colliers Project Leaders NE	Dore & Whitter	18-Mar-26		
Webster Bartlett Jr Sr High	445	Brait Builders Corp.	Colliers Project Leaders NE, LLC	Flansburgh Associates	17-Apr-26		
Lowell High School	3,520	Suffolk Construction Company	Skanska USA Building, Inc.	Perkins Eastman/DPC	04-May-26		
Bristol-Plymouth Voc Tech	1,434	Consigli Construction Company, Inc.	PMA Consultants	HMFH Architects, Inc.	26-May-26		
Northeast Metro Voc Tech	1,600	Gilbane Building Company	PMA Consultants	Drummey Rosane Anderson	29-May-26		
Amherst Elementary School	575	CTA Construction Co., Inc.	Accenture, PLC (fka Anser Advisory)	Dinisco Design, Inc	31-Jul-26		
Greater Fall River Voc Tech	1,500	Suffolk Construction Company	Colliers Project Leaders NE	Kaestle Boos Associates	01-Jul-26		
East Longmeadow High School	800	Fontaine Brothers, Inc.	Skanska USA Building, Inc	Jones Whitsett Architects, Inc.	31-Jul-26		
Spencer E Brookfield Prouty High School	305	Fontaine Brothers, Inc.	Colliers Project Leaders NE	Jones Whitsett Architects	14-Aug-26		
Wakefield Memorial High School	1,000	Bond Building Construction, Inc.	Leftfield LLC	Symmes Maini & McKee	03-Dec-26		

CLOSEOUT

After the District’s contractor finishes all project work including demolishing the old building, completing site work, and finalizing commissioning, the project proceeds to the Closeout Phase. Once all the project costs have been paid by the District, the District submits its Final Request for Payment Reimbursement via the MSBA’s Pro-Pay system. After the District submits all the items identified on the MSBA’s Index of Final Closeout, including the Final Request for Payment Reimbursement, the MSBA initiates the Draft Audit Report and sends it to the District for its consideration. The MSBA performs the final audit to determine final total grant amounts. Final payment to the District requires the MSBA Board’s approval of the final Total Facilities Grant for the project.

Currently, there are 110 projects in the Closeout Phase, including 77 ARP projects and 33 Core Program projects. The chart, shown below, lists the Core Program projects by year of achieved Substantial Completion:

Year	All Project Phases	Final Audit Approved	Closeout	Building Complete
2012	22	22	0	0
2013	24	24	0	0
2014	19	19	0	0
2015	27	26	1	0
2016	12	12	0	0
2017	8	6	2	0
2018	11	11	0	0
2019	13	12	1	0
2020	7	5	2	0
2021	18	10	7	1
2022	15	4	11	0
2023	8	1	4	3
2024	14	0	5	9
2025	7	0	0	7
Total	205	152	33	20

POST OCCUPANCY EVALUATION

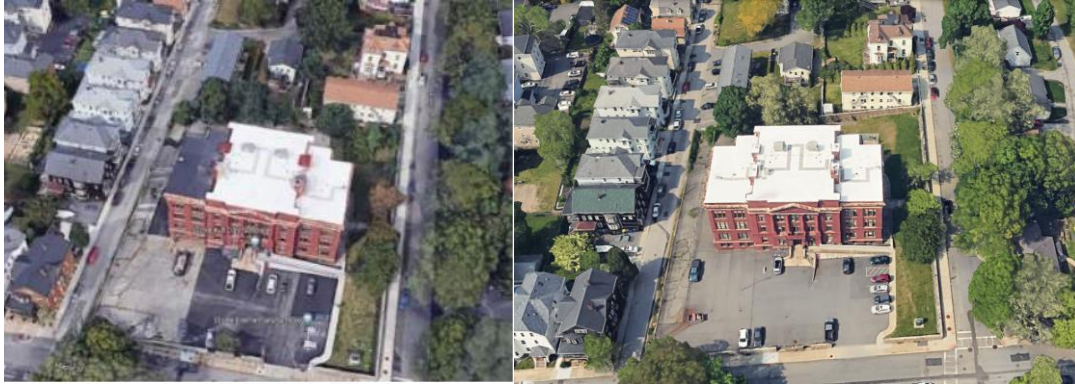
Approximately three years after an MSBA-funded school building reaches substantial completion, the MSBA coordinates with districts to distribute post occupancy surveys and pre-visit questionnaires, and to schedule building visits with district representatives to complete a Post Occupancy Evaluation (“POE”). The MSBA’s POE process was developed in part to assist the MSBA in understanding that MSBA-funded school building projects are operating as intended and performing as designed. In addition, the collection of technical data, accompanied by school district and occupant feedback, enables the MSBA, school districts, and the consultant community to apply lessons learned to future school building projects as well as to the ongoing maintenance and operations of MSBA-funded school buildings.

A preliminary list of the districts anticipated to participate in POEs in FY 2026 is shown below; this list will be updated as districts agree or decline to participate in the program. The MSBA will provide a POE report to each participating district. Since FY 2022, the MSBA has participated in POEs for 43 projects.

<u>Project</u>	<u>Enrollment</u>	<u>Contractor</u>	<u>OPM</u>	<u>Designer</u>	<u>Building Construction Completion Date*</u>	<u>POE Visit Date</u>
West Springfield Coburn ES	585	Fontaine Brothers	NV5	TSKP Studio	8/30/22	10/7/25
Millbury Shaw ES	550	Fontaine Brothers	LiRo-Hill	Turowski2 Architecture	7/29/22	11/6/25
Pentucket Regional HS	965	Rich-KBE (Joint Venture)	Vertex	Dore & Whittier	7/31/22	12/4/25
Tewksbury Trahan ES	790	Consigli	Turner & Townsend Heery	Flansburgh Associates	1/3/23	2/6/26
Natick Kennedy MS	1,000	Brait Builders	Compass	Ai3 Architects	12/11/20	3/4/26
Attleboro HS	1,725	Consigli	Skanska	Kaestle Boos Associates	8/15/22	3/26/26
Easton Ames ES	760	Brait Builders	PMA Consultants	Perkins Eastman	12/20/22	4/15/26
Dennis-Yarmouth MS	940	Commodore Builders	PMA Consultants	Perkins Eastman	4/20/22	5/8/26

*Date on the Certificate of Substantial Completion, once provided to the MSBA

ACCELERATED REPAIR PROGRAM



The photos above depict the roof replacement at Fall River’s Westall Elementary School serving 276 students. The project replaced a partial section of roof with a new PVC membrane roof, thus extending the useful life of the 118-year-old building. This project also replaced two 3,040 MBH boilers. The project reached Substantial Completion in April 2021 and received Final Audit Approval at the February 2026 Board of Directors meeting.

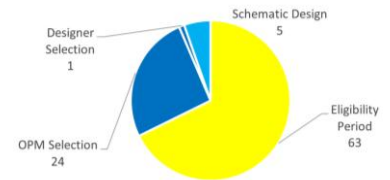
Currently, there are **262** ARP projects in the MSBA’s Eligibility Period and Capital Pipeline. There have been **12** projects approved for Final Audit in FY 2026. Prior to FY 2026, **289** projects received Final Audit approval. The combined **551** projects are located in 166 districts, many of whom have been invited to the ARP multiple times. All the new information that has been updated since the last report is ***italicized and bolded***.

Repair Program	Number of Districts	Number of Projects	Total Project Budgets	Maximum Facilities Grants	Number of Projects Final Audit Approved
2025 Accelerated*	45	93	-	-	-
2024 Accelerated*	33	63	<i>\$398,894,511</i>	<i>\$241,379,511</i>	-
2022 Accelerated	12	27	\$86,949,136	\$55,301,436	-
2021 Accelerated	15	26	\$109,602,763	\$59,925,011	4
2020 Accelerated	15	21	\$81,731,451	\$43,329,550	7
2019 Accelerated	24	38	\$85,180,989	\$52,047,959	33
2018 Accelerated	20	30	\$83,172,480	\$47,018,557	20
2017 Accelerated	19	34	\$117,020,597	\$73,280,673	26
2016 Accelerated	28	48	\$156,598,234	\$83,007,586	40
2015 Accelerated	24	43	\$136,680,652	\$91,974,052	43
2014 Accelerated	34	47	\$108,410,084	\$65,388,035	47

* Financial totals reflect Project Funding Agreement approvals through the February 25, 2026, Board of Directors Meeting.

2025 Accelerated Repair Program

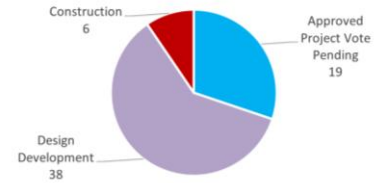
- Invitations – 45 districts, 93 projects.
 - Scope includes 44 roofs, 14 windows/doors, 10 roof and windows/doors, 9 heat pumps, and 16 roofs and heat pumps.



2025 ARP Status Chart

2024 Accelerated Repair Program

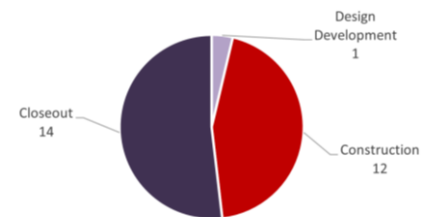
- Invitations – **37** districts, **70** projects.
 - Scope includes **53** roofs, **13** windows/doors, and 4 roof and windows/doors.
- SOI Removal – four districts; **seven** projects (five roof, one windows/doors, **one roof and partial windows/doors**)
- Approved for Project Funding Agreement – **33** districts, representing **63** projects.
- Total Project Budgets – **\$398,894,660**
- MSBA Total Facilities Grant - **\$241,379,511**
- **Nine out of ten projects reported bids within the estimated budget.**



2024 ARP Status Chart

2022 Accelerated Repair Program

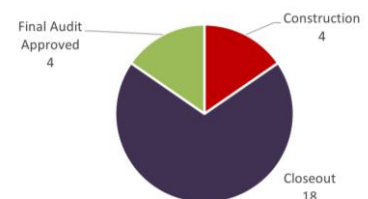
- Invitations – 16 districts, 33 projects.
 - Scope includes 10 roofs, 7 windows/doors, and 16 boilers.
- SOI Removal – four districts; six projects (four roofs, two boilers).
- Approved for Project Funding Agreement – 12 districts, representing 27 projects.
- Total Project Budgets - \$86,949,136
- MSBA Total Facilities Grant - \$55,301,436
- 24 of 26 projects reported bids are within the estimated budget.



2022 ARP Status Chart

2021 Accelerated Repair Program

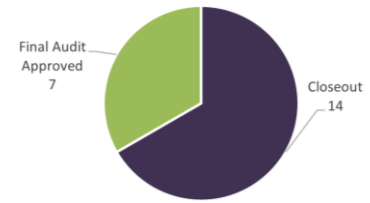
- Invitations – 16 districts, 28 projects.
 - Scope includes 13 roofs, 11 windows/doors, and eight boilers.
- SOI Removal – one district; two projects (two roofs, two windows/doors).
- Approved for Project Funding Agreement – 15 districts, representing 26 projects.
- Total Project Budgets - \$109,602,763
- MSBA Total Facilities Grant - \$59,925,011
- 81% of projects bid within the estimated budget.
- Four projects have completed Final Audit.



2021 ARP Status Chart

2020 Accelerated Repair Program

- Invitations – 18 districts, representing 25 projects.
 - Scope includes 14 roofs, nine windows/doors, and four boilers.
- SOI Removal – three districts; four projects (two roofs, one windows/doors, one boiler).
- Approved for Project Funding Agreement – 15 districts, representing 21 projects.
- Total Project Budgets - \$81,731,451
- MSBA Total Facilities Grant - \$43,329,550
- 71% of projects bid within the estimated budget, while one district removed its SOI (one roof) following receipt of bids which exceeded the estimated budget.
- Seven projects have completed Final Audit.



2020 ARP Status Chart

2019 Accelerated Repair Program

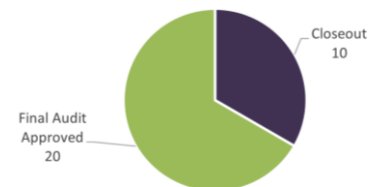
- Invitations – 27 districts, representing 42 projects.
 - Scope includes 24 roofs and 21 boilers.
- SOI Removal – three districts; four projects (one roof, three boilers).
- Approved for Project Funding Agreement – 24 districts, representing 38 projects.
- Total Project Budgets - \$85,180,989
- MSBA Total Facilities Grant - \$52,047,959
- Three districts, representing three projects, required a schedule extension following PFA approval.
- 97% of projects bid within the estimated budget.
- 33 projects, or 86%, have completed Final Audit.



2019 ARP Status Chart

2018 Accelerated Repair Program

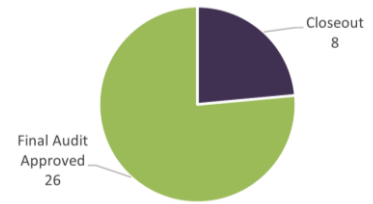
- Invitations – 23 districts, representing 34 projects.
 - Scope includes 17 roofs, 11 windows/doors, and 14 boilers.
- SOI Removal – three districts; four projects (two roofs, two windows/doors, one boiler).
- Approved for Project Funding Agreement – 20 districts, representing 30 projects.
- Total Project Budgets - \$83,172,480
- MSBA Total Facilities Grant - \$47,018,557
- Two districts, representing two projects, required a schedule extension following PFA approval.
- 90% of projects bid within the estimated budget.
- **20** projects, or **67%**, have completed Final Audit.



2018 ARP Status Chart

2017 Accelerated Repair Program

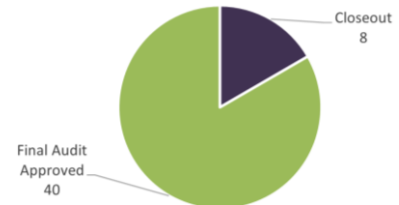
- Invitations – 20 districts, representing 36 projects.
 - Scope includes nine roofs, 23 windows/doors, and 15 boilers.
- SOI Removal - one district; two projects (one boiler; one windows/doors).
- Approved for Project Funding Agreement - 19 districts, representing 34 projects.
- Total Project Budgets - \$117,020,597
- MSBA Total Facilities Grant - \$73,280,673
- Three districts, representing six projects, required a schedule extension following PFA approval.
- 79% of projects bid within the estimated budget.
- 26 projects, or 76%, have completed Final Audit.



2017 ARP Status Chart

2016 Accelerated Repair Program

- Invitations – 28 districts, representing 49 projects.
 - Scope includes 25 roofs, 19 windows/doors, and 13 boilers.
- SOI Removal - one project (one boiler).
- Approved for Project Funding Agreements - 28 districts, representing 48 projects.
- Total Project Budgets - \$156,598,234
- MSBA Total Facilities Grant - \$83,007,586
- Four districts, representing four projects, required a schedule extension following PFA approval.
- 73% of projects bid within the estimated budget.
- 40 projects, or 83%, have completed Final Audit.



2016 ARP Status Chart

Closed Accelerated Repair Programs

Repair Program	Number of Districts	Number of Projects	Number of Roofs	Number of Windows/ Doors	Number of Boilers	Final Costs Submitted	Final Total Facilities Grants
2015 Accelerated	24	44	22	26	9	\$136,680,652	\$91,974,052
2014 Accelerated	34	47	20	25	13	\$86,421,038	\$48,401,743
2013 Accelerated	25	45	30	13	7	\$70,489,512	\$37,769,944
2012 Accelerated	24	36	21	11	7	\$47,748,996	\$28,518,764

Status of Green Repair Program

The Green Repair Program resulted in PFA authorizations totaling \$366,647,226 in Total Project Costs and \$222,889,218 in MSBA grants. All 189 projects from 93 districts have been approved for final grant payments.

2022 Accelerated Repair Projects – Construction Estimate vs. 2023-2026

- 24 of 26 projects reported bids within estimated budget.
- One additional project is anticipated to be reported by the June 2026 Board of Directors meeting.

District	School	Scope	Project Type	Bid Date	Construction Estimate*	Bid Amount*	Variance from Construction Estimate	Reimbursement Rate	Potential Grant Variance**
New Bedford	Ellen R Hathaway	Windows / Doors	DBB	Nov-23	\$3,038,097	\$2,276,700	\$761,397	80.00%	\$609,118
Mansfield	Harold L Qualters Middle	Boiler	DBB	Dec-23	\$3,180,377	\$2,805,000	\$375,377	52.89%	\$198,537
Holyoke	H.B. Lawrence School	Windows / Doors	DBB	Jan-24	\$3,468,923	\$2,930,745	\$538,178	80.00%	\$430,542
Holyoke	Lt Elmer J McMahon Elementary	Windows / Doors	DBB	Jan-24	\$2,744,673	\$2,683,604	\$61,069	80.00%	\$48,855
Holyoke	Maurice A Donahue Elementary	Partial Windows / Doors	DBB	Jan-24	\$2,605,878	\$2,324,345	\$281,533	80.00%	\$225,226
Holyoke	Wm J Dean Voc Tech High	Boiler	DBB	Jan-24	\$1,182,674	\$947,000	\$235,674	80.00%	\$188,539
New Bedford	Elizabeth Carter Brooks	Roof	DBB	Jan-24	\$2,791,123	\$1,721,200	\$1,069,923	80.00%	\$855,938
Springfield	Milton Bradley School	Boiler	DBB	Mar-24	\$1,685,642	\$932,800	\$752,842	80.00%	\$602,274
Springfield	Rebecca M Johnson	Boiler	DBB	Mar-24	\$1,307,167	\$886,000	\$421,167	80.00%	\$336,934
Cambridge	Amigos School	Roof	DBB	Mar-24	\$1,429,125	\$1,380,770	\$48,355	34.16%	\$16,518
Boston	Dr. William Henderson Upper	Roof	DBB	Mar-24	\$2,814,313	\$1,924,000	\$890,313	60.42%	\$537,927
Lowell	B.F. Butler Middle	Boiler	DBB	Apr-24	\$1,116,448	\$827,370	\$289,078	79.58%	\$230,048
Lowell	Bartlett Community Partnership	Boiler	DBB	Apr-24	\$1,841,561	\$1,633,000	\$208,561	79.58%	\$165,973
Lowell	Henry J Robinson Middle	Boiler	DBB	Apr-24	\$1,650,462	\$1,519,187	\$131,275	79.58%	\$104,469
Lowell	John J Shaughnessy	Roof	DBB	Apr-24	\$4,524,525	\$1,895,900	\$2,628,625	79.58%	\$2,091,860
Lowell	Joseph McAvinue	Boiler	DBB	Apr-24	\$1,123,694	\$888,424	\$235,270	79.58%	\$187,228
Fitchburg	Arthur M. Longsjo Middle School	Boiler	DBB	Feb-24	\$1,748,501	\$1,470,000	\$278,501	80.00%	\$222,801
Quincy	Wollaston School	Partial Roof	DBB	May-24	\$1,016,703	\$721,800	\$294,903	57.57%	\$169,776
Quincy	Montclair	Partial Roof	DBB	May-24	\$1,524,009	\$1,844,000	-\$319,991	57.57%	\$0
Quincy	Francis W Parker	Boiler	DBB	Jul-24	\$1,139,430	\$785,339	\$354,091	57.57%	\$203,850
Fall River	Resiliency Prep School	Windows / Doors	DBB	Nov-24	\$6,842,837	\$4,578,655	\$2,264,182	80.00%	\$1,811,346
Boston	Dennis C Haley	Boiler	DBB	Sep-24	\$1,649,009	\$1,632,450	\$16,559	60.42%	\$10,005
Boston	Holland School of Technology	Boiler	DBB	Sep-24	\$1,117,184	\$1,740,550	-\$623,366	60.42%	\$0
Boston	The English High	Windows / Doors	DBB	Jan-25	\$9,091,274	\$6,632,000	\$2,459,274	60.42%	\$1,485,893
Haverhill	Moody	Boiler	DBB	Feb-25	\$1,850,892	\$577,000	\$1,273,892	76.84%	\$978,858
Haverhill	Silver Hill	Boiler	DBB	Feb-25	\$1,094,480	\$356,750	\$737,730	76.84%	\$566,872
				Total	\$63,579,001	\$47,914,589	\$15,664,412		\$12,279,388

PROJECT VARIANCES

Core Program – Total Project Budget Update

Upon receiving the Board’s approval of the Project Scope and Budget, the MSBA and participating districts enter into a Project Funding Agreement, which establishes the Total Project Budget and the Estimated Maximum Total Facilities Grant for an approved project. Staff have reported on budget increases for the 55 projects below at previous Board meetings. No shading appears where project information is new or updated since the previous Board meeting. In no event has the increase in the budget resulted in an increase to the Maximum Total Facilities Grant, as authorized by the Board.

District	School	Scope	Project Funding Agreement		PFA Bid Amendment/ Final Audit		Reason for Increase to Total Project Budget
			Total Project Budget	Maximum Total Facilities Grant	Total Project Budget	Maximum Total Facilities Grant	
Andover	Bancroft ES	New	\$44,659,837	\$16,773,753	\$50,299,859	\$16,575,965	The District has appropriated additional funds to cover the costs associated with increased construction costs and additional contingencies for litigation/settlement costs and other ineligible costs.
Andover	West ES	New	\$151,661,968	\$38,442,820	\$168,066,623	\$38,007,178	The District has appropriated additional funds to cover the costs associated with the construction bid overage.
Ashland	David Mindess ES	New	\$84,387,000	\$27,008,753	\$84,637,000	\$26,371,101	The District has transferred additional funds to cover the costs associated with increased construction costs.
Berlin-Boylston	Tahanto Regional HS	New	\$43,954,901	\$21,148,751	\$43,519,302	\$18,972,041	The District submitted final project costs that exceeded the total project budget established at bid. Final Costs did not exceed the original total project budget established at Project Funding Agreement.
Blue Hills	Blue Hills Regional Technical School	Add/ Reno	\$84,862,768	\$44,210,180	\$88,071,616	\$43,708,007	The District has appropriated additional funds to cover the costs associated with increased construction costs.
Boston	Boston Arts Academy	New	\$124,755,412	\$48,890,620	\$137,370,916	\$48,186,575	The District appropriated additional funds to cover costs associated with increased construction costs and additional contingency for change order costs.
Boston	Josiah Quincy Upper School	New	\$193,591,467	\$54,075,966	\$223,891,467	\$54,042,995	The District has appropriated additional funds to cover the costs associated with increased construction costs.
Boston	William E. Carter School	New	\$91,966,532	\$30,595,455	\$111,380,185	\$30,157,644	The District has appropriated additional funds to cover the costs associated with the construction bid overage and increased contingency budget.
Bristol County Agricultural	Bristol County Agricultural HS	Add/ Reno	\$103,750,000	\$53,286,797	\$103,947,718	\$53,095,156	The District received additional funding through the CARES Act for Municipal Government. The federal Coronavirus Aid, Relief, and Economic Security Act (the "CARES Act") includes funds for Massachusetts governments to use to pay costs incurred in responding to the COVID-19 pandemic.
			\$103,750,000	\$53,286,797	\$106,547,718	\$52,987,521	The District appropriated additional funds to cover the Closeout and Settlement Agreement with the General Contractor and Architect and Owner's Project Manager for additional construction management fees incurred.
Burlington	Marshall Simonds MS	Add/ Reno	\$32,865,272	\$17,143,365	\$34,221,929	\$15,362,127	The District appropriated at its May 2012 annual town meeting through Articles 18: 19, additional funds for the costs associated with the construction of the new field complex and field lighting replacement.
Chicopee	Dupont Middle School	Reno	\$37,999,940	\$30,100,581	\$39,849,940	\$29,750,043	The District appropriated additional funds to cover the costs associated with increased construction costs.
Essex North Shore Agricultural & Technical School District	Essex North Shore Agricultural & Technical HS	New	\$125,000,000	\$77,500,000	\$133,770,000	\$77,500,000	The Board was informed at the March 30, 2011 meeting that the Total Project Budget had increased due to additional ineligible scope that would be funded by DCAMM.
			\$125,000,000	\$77,500,000	\$134,501,368	\$77,500,000	The District has appropriated additional funds to cover the costs associated with increased construction costs for horse tack barn renovations.
Fitchburg	Crocker ES	New	\$65,032,984	\$47,339,378	\$76,650,000	\$47,302,225	The District appropriated additional funds to cover costs associated with increased construction costs and to increase contingency budget.
Framingham	Fuller Middle School	New	\$98,276,878	\$39,453,932	\$101,141,939	\$38,698,964	The District appropriated additional funds to cover the costs associated with the installation of new turf fields.
Greater New Bedford	Greater New Bedford Vocational and Technical High School	Add/ Reno	\$17,099,808	\$13,543,920	\$16,396,429	\$12,258,642	The District submitted final project costs that exceeded the total project budget established at bid. Final Costs did not exceed the original total project budget established at Project Funding Agreement.
Groton-Dunstable Regional School District	Florence Roche ES	New	\$78,650,734	\$32,309,508	\$89,150,734	\$32,253,445	The District appropriated additional funds to cover costs associated with increased construction costs and to increase contingency.

District	School	Scope	Project Funding Agreement		PFA Bid Amendment/ Final Audit		Reason for Increase to Total Project Budget
			Total Project Budget	Maximum Total Facilities Grant	Total Project Budget	Maximum Total Facilities Grant	
Haverhill	Caleb Dustin Hunking School	New	61,500,000	40,363,276	61,677,024	39,933,953	The District has appropriated additional funds to cover additional costs associated with Furnishings and Equipment.
Hopkinton	Center ES	New	\$45,629,373	\$14,058,455	\$47,129,373	\$14,058,455	The District has appropriated \$1,500,000 of additional funds to cover the costs associated with the construction of a building addition due to an unanticipated increase in enrollment.
Lawrence	Francis M. Leahy ES	New	\$103,740,911	\$66,732,018	\$115,795,797	\$66,243,007	The District appropriated additional funds to cover costs associated with increased construction costs and to increase contingency.
Lawrence	Oliver Partnership School	Add/Reno	\$132,300,000	\$61,647,551	\$147,800,000	\$61,359,903	The District appropriated additional funds to cover costs associated with increased construction costs and to increase contingency.
Lexington	Joseph Estabrook ES	New	\$40,792,248	\$12,250,739	\$43,392,248	\$12,148,491	The District has executed a GMP that exceeds the Construction Budget of the PFA. The District has appropriated additional funds to cover the costs associated with increased construction costs and additional contingencies.
Lowell	High School	Add/Reno	\$343,399,220	\$215,992,406	\$381,967,231	\$215,992,406	The District has appropriated additional funds to cover the costs associated with the construction bid overage and an increase to construction contingency budget.
Minuteman	Minuteman RVTHS	New	\$144,922,480	\$45,206,061	\$148,072,480	\$44,117,021	The District appropriated additional funds to cover the costs associated with new athletic fields.
Nauset	Nauset Regional HS	Add/Reno	\$131,825,665	\$44,739,207	\$169,925,665	\$44,739,207	The District appropriated additional funds to cover costs associated with increased construction costs and to increase contingency budget.
New Bedford	Irwin Jacobs (Hannigan) ES	New	\$36,747,197	\$22,726,582	\$34,925,392	\$22,372,846	The District submitted final project costs that exceeded the total project budget established at bid. Final Costs did not exceed the original total project budget established at Project Funding Agreement.
Newburyport	Nock/Molin MS	Add/Reno	\$26,997,326	\$13,697,934	\$28,170,749	\$12,520,326	The District has received additional funding to cover additional construction change order costs.
Northeast Metropolitan Regional Vocational	Northeast Metropolitan Regional Vocational HS	New	\$317,422,620	\$163,383,141	\$324,922,542	\$162,723,932	The District received additional funding via a Massachusetts Skills Grant and has allocated the additional funds to the owner's and construction contingencies.
North Reading	North Reading MS/HS	Add/Reno	\$107,727,074	\$49,323,123	\$123,227,074	\$49,323,123	This is a CMR project. The estimated, reconciled construction costs tracked over budget at DD (\$9,746,655 over), 60% (\$4,655,965 over), and 90% (\$15,136,846 over). A Town override vote in March 2013 obtained an additional \$15,500,000 in local funding to proceed.
Norfolk County Agricultural	Norfolk County Agricultural HS	Add/Reno	\$28,552,385	\$15,369,712	\$30,589,078	\$13,867,050	The District has executed a Tender Agreement and Completion Agreement Contract, increasing its Total Project Budget, following the termination of its original construction contract.
Northborough	Lincoln Street ES	Add/Reno	\$25,530,553	\$10,407,408	\$25,530,553	\$10,407,408	The MSBA Board Approved Total Project Budget increased by \$60,400 from \$25,470,153 to \$25,530,553 due to the addition of an alternate, for a new ball field added at the District's request.
Oxford	Oxford MS	Add/Reno	\$6,128,870	\$3,483,589	\$7,340,000	\$3,359,171	The District received additional funding to cover additional construction costs including accessibility upgrades. District submitted final project costs that exceeded the total project budget established at bid. Final Costs did not exceed the original total project budget established at Project Funding Agreement.
Peabody	William A. Welch ES	Add/Reno	\$29,973,821	\$17,628,004	\$33,432,013	\$17,628,004	The District has appropriated additional funds to cover the costs associated with the construction bid overage.
Plymouth	South HS	New	\$107,800,000	\$46,867,514	\$111,063,271	\$46,328,160	The District appropriated \$3,263,371 of additional funding to fund change order work to incorporate scope previously identified in the construction bid documents as Alternate 4 (synthetic turf field) and a portion of Alternate 5 (electrical infrastructure to support future lights at synthetic turf field). Note that the increased Total Project Budget will not increase the Maximum Facilities Grant.
Quincy	Reay E Sterling MS	New	\$58,314,910	\$29,285,563	\$58,825,659	\$28,482,446	The District increased its Total Project Budget due to additional construction change orders for a turf field and for delay costs associated with a utility company work stoppage.
Randolph	North Randolph ES	New	\$50,384,511	\$32,116,809	\$54,384,511	\$31,700,472	The District appropriated additional funds to cover costs associated with increased construction costs and to increase contingency budget.

District	School	Scope	Project Funding Agreement		PFA Bid Amendment/ Final Audit		Reason for Increase to Total Project Budget
			Total Project Budget	Maximum Total Facilities Grant	Total Project Budget	Maximum Total Facilities Grant	
Revere	Staff Sergeant James J. Hill ES	New	\$45,402,396	\$29,551,048	\$45,402,396	\$29,551,048	At Project Scope and Budget, the Total Project Budget was approved at \$44,382,396. The City of Revere has increased the land acquisition budget. Therefore, the projected total project budget at PFA has increased to \$45,402,396. Note that the MSBA grant has not changed since the Project Scope and Budget Agreement.
Salem	Saltonstall ES	Repair	\$15,503,406	\$11,794,492	\$15,752,033	\$10,709,091	The District has executed a GMP that exceeds the Construction Budget of the PFA. The District has appropriated additional funds to cover the costs associated with increased construction costs and additional contingencies.
Somerset	Middle School	New	\$85,020,490	\$38,686,352	\$91,872,373	\$38,238,605	The District appropriated additional funds to cover the costs associated with the construction of athletic fields and photovoltaic arrays.
Somerville	East Somerville Community School	Add/Reno	\$33,185,258	\$15,237,996	\$38,006,621	\$15,237,996	At the March 28, 2012 Board Meeting, the Board approved an amendment to the PFA and a \$6.25M District loan.
Spencer-East Brookfield	David Prouty HS	Add/Reno	\$111,587,059	\$53,979,044	\$116,061,338	\$52,740,313	The District has appropriated additional funds to cover the costs associated with the construction bid overage.
Stoneham	High School	New	\$189,593,594	\$56,574,750	\$214,583,851	\$56,574,750	The District appropriated additional funds to cover costs associated with increased construction costs and to increase contingency budget.
Sutton	Sutton MS	Add/Reno	\$59,945,474	\$29,843,511	\$60,130,536	\$27,002,506	The District has executed a Tender Agreement and Completion Agreement Contract, increasing its Total Project Budget, following the termination of its original construction contract.
Swampscott	Hadley ES	New	\$98,316,523	\$34,390,610	\$101,226,506	\$34,254,224	The District has appropriated additional funds to cover the costs associated with the construction bid overage and an increase to construction contingency budget.
Tewksbury	Tewksbury HS	New	\$84,173,174	\$44,194,627	\$67,710,158	\$36,219,487	The District submitted final project costs that exceeded the total project budget established at bid. Final Costs did not exceed the original total project budget established at Project Funding Agreement.
Tyngsborough	Tyngsborough MS	New	\$83,480,000	\$34,149,140	\$88,106,000	\$33,277,759	The District has appropriated additional funds to cover the costs associated with the construction bid overage.
Uxbridge	Uxbridge HS	New	\$43,000,000	\$22,362,328	\$44,986,479	\$22,362,328	The District has appropriated additional funds to cover the costs associated with the construction of athletic fields originally included in the PFA but which were not included in the bid as the District's construction contract would have exceeded the budget.
Watertown	High School	New	\$201,461,673	\$51,564,214	\$210,771,438	\$51,232,933	The District has appropriated additional funds to cover the costs associated with the construction bid overage.
Wellesley	John D. Hardy ES	New	\$72,500,000	\$15,585,802	\$72,848,074	\$15,320,270	The District has appropriated additional funds to cover the costs associated with the construction bid overage.
Weston	Field ES	New	\$31,504,146	\$8,310,510	\$32,654,146	\$8,105,549	District-approved Construction Change Orders exceeded available contingency amount.
Westwood	Paul R. Hanlon ES	New	\$89,856,899	\$21,845,980	\$91,984,145	\$21,827,919	The District has appropriated additional funds to cover the costs associated with the construction bid overage and increased the budget through an ARPA Grant.
Winchester	Lynch ES	New	\$94,525,933	\$25,273,822	\$94,825,933	\$25,242,972	The District has appropriated additional funds to cover the costs associated with the construction bid overage.
Winchester	Winchester HS	Add/Reno	\$129,923,146	\$44,493,270	\$131,513,741	\$43,100,458	The MSBA Board Approved Total Project Budget increased due to a construction change order for additional soil abatements at Skillings Field. Note that the increased Total Project Budget will not increase the Maximum Total Facilities Grant.
Winthrop	Winthrop MS/HS	New	\$81,818,740	\$42,582,841	\$81,432,986	\$41,249,005	The MSBA Board Approved Total Project Budget increased due to revised FEMA flood plain requirements which necessitated the elevation of the new building to be raised. Note that the increased Total Project Budget will not increase the Maximum Total Facilities Grant.
Woburn	Wyman-Hurld ES	New	\$33,705,396	\$14,387,427	\$39,647,723	\$14,387,427	The District had completed a project review with its Conservation Commission and an Order of Conditions was issued on June 12, 2015. A neighborhood group appealed this Order and was reviewed by The DEP. The District experienced delays in completing its City Council vote for its appropriation and incurred additional costs.
Worcester	Doherty HS	New	\$293,384,178	\$135,241,024	\$314,351,858	\$127,118,217	The District has appropriated additional funds to cover the costs associated with the construction bid overage.

APPENDIX A PROJECT STATUS LIST

Date of Report: 3/24/2026

Total Projects: 436

SOI	MSBA ID	District	School	Project Phase	Project Type	Project Scope	Procurement Type	OPM	Designer	CM/GC	Commissioning Consultant
2016	201606000020	Acton-Boxborough	C.T. Douglas Elementary School	Closeout	Core Program	New Construction	CM@R	Skanska USA Building, Inc	Arrowstreet Inc.	Consigli Construction Company, Inc.	Colliers Project Leaders NE, LLC
2019	201900030025	Acushnet	Acushnet Elementary School	Closeout	Accelerated Repair	Roof	DBB	Arcadis U.S., Inc.	Next Phase Studios, Inc.	Young Developers LLC	Gale Associates, Inc.
2020	202000050505	Agawam	Agawam High	Construction	Core Program	Addition / Renovation	CM@R	Leftfield, LLC	Flansburgh Associates, Inc.	Fontaine Brothers, Inc.	WSP USA
2019	201900050405	Agawam	Agawam Junior High	Closeout	Accelerated Repair	Boiler	DBB	D.A. Sullivan & Sons, Inc.	Shekar & Associates, Inc.	Adams Plumbing and Heating, Inc.	BVH Integrated Services, P.C.
2025	202500050020	Agawam	Benjamin J Phelps	Eligibility Period	Accelerated Repair	Roof	-	-	-	-	-
2025	202500050010	Agawam	Clifford M Granger	Eligibility Period	Accelerated Repair	Roof	-	-	-	-	-
2025	202500050030	Agawam	James Clark School	Eligibility Period	Accelerated Repair	Roof	-	-	-	-	-
2025	202500050025	Agawam	William P. Sapelli Elementary	Eligibility Period	Accelerated Repair	Roof	-	-	-	-	-
2015	201500070005	Amesbury	Shay Elementary	Closeout	Core Program	New Construction	DBB	NV5 (fka Joslin, Lesser + Associates Inc.)	DiNisco Design, Inc.	CTA Construction Co., Inc.	BVH Integrated Services, P.C.
2019	201900080020	Amherst	Fort River Elementary	Construction	Core Program	New Construction	DBB	Accenture, PLC (fka Anser Advisory)	DiNisco Design, Inc.	CTA Construction Co., Inc.	Van Zelm Heywood & Shadford, Inc.
2024	202406050405	Amherst-Pelham	Amherst Regional Middle School	Design Development	Accelerated Repair	Roof	-	The Vertex Companies, LLC	Turowski2 Architecture, Inc.	-	-
2017	201700090025	Andover	West Elementary	Building Complete	Core Program	New Construction	CM@R	PMA Consultants, LLC	Symmes Maini & McKee Associates, Inc.	Gilbane Building Company	Rist-Frost-Shumway Engineering, P.C.
2015	201500100505	Arlington	Arlington High	Building Complete	Core Program	New Construction	CM@R	Skanska USA Building, Inc	HMFH Architects, Inc.	Consigli Construction Company, Inc.	Rist-Frost-Shumway Engineering, P.C.
2025	202500100030	Arlington	Hardy	Eligibility Period	Accelerated Repair	Heat Pump	-	-	-	-	-
2025	202500100410	Arlington	Ottoson Middle	Eligibility Period	Core Program	-	-	-	-	-	-
2024	202406100010	Ashburnham-Westminster	Meetinghouse School	Design Development	Accelerated Repair	Roof	-	AECOM	CSS Architects Incorporated	-	Horizon Engineering Associates, LLP
2017	201700140015	Ashland	David Mindess	Building Complete	Core Program	New Construction	CM@R	Compass Project Management, Inc.	Flansburgh Associates, Inc.	Shawmut Design and Construction	WSP USA
2024	202406150505	Athol-Royalston	Athol High	OPM Selection	Core Program	-	-	-	-	-	-
2014	201400160505	Attleboro	Attleboro High	Closeout	Core Program	New Construction	CM@R	Skanska USA Building, Inc	Kaestle Boos Associates, Inc.	Consigli Construction Company, Inc.	Cadmus Group LLC
2025	202500180010	Avon	Ralph D Butler	Eligibility Period	Core Program	-	-	-	-	-	-
2025	202500200505	Barnstable	Barnstable High	OPM Selection	Accelerated Repair	Roof	-	-	-	-	-
2025	202500200315	Barnstable	Barnstable Intermediate School	OPM Selection	Accelerated Repair	Roof	-	-	-	-	-
2015	201500260505	Belmont	Belmont High	Closeout	Core Program	Addition / Renovation	CM@R	CHA Consulting, Inc.	Perkins+Will	Skanska USA Building, Inc.	BVH Integrated Services, P.C.
2025	202500260305	Belmont	Winthrop L Cheney Upper Elementary	OPM Selection	Accelerated Repair	Roof	-	-	-	-	-
2020	202000270010	Berkley	Berkley Community School	Construction	Core Program	New Construction	DBB	PMA Consultants, LLC	Taylor & Burns, Inc.	-	Colliers Project Leaders NE, LLC
2021	202106180505	Berkshire Hills	Monument Mt Regional High	Design Development	Core Program	New Construction	DBB	Skanska USA Building, Inc	DiNisco Design, Inc.	-	-
2024	202406200010	Berlin-Boylston	Boylston Elementary School	Approved Project Vote Pending	Accelerated Repair	Roof	-	Watermark Environmental, Inc.	Matz Collaborative Architects, Inc.	-	-
2024	202408050605	Blackstone Valley Regional Voc Tech	Blackstone Valley	Construction	Accelerated Repair	Roof	-	Accenture, PLC (fka Anser Advisory)	TSKP Studio, LLC	-	Building Enclosure Associates, LLC (VPC)
2022	202206220505	Blackstone-Milville	Blackstone Milville RHS	Schematic Design Approved Project Vote Pending	Core Program	New Construction	-	Colliers Project Leaders NE, LLC	Drumme Rosane Anderson, Inc.	-	-
2024	202400350302	Boston	Adams Elementary School	-	Accelerated Repair	Windows / Doors	-	Atlantic Construction and Management, Inc.	Matz Collaborative Architects, Inc.	-	-
2022	202200350525	Boston	Albert D Holland School of Technology	Construction	Accelerated Repair	Boiler	DBB	NV5 (fka Joslin, Lesser + Associates Inc.)	CSS Architects Incorporated	Patrick J. Kennedy & Sons Inc.	Bard, Rao + Athanas Consulting Engineers, LLC
2025	202500350548	Boston	Boston Adult Tech Academy	Eligibility Period	Accelerated Repair	Roof	-	-	-	-	-

Date of Report: 3/24/2026

Total Projects: 436

SOI	MSBA ID	District	School	Project Phase	Project Type	Project Scope	Procurement Type	OPM	Designer	CM/GC	Commissioning Consultant
2013	201300350546	Boston	Boston Arts Academy	Closeout	Core Program	New Construction	CM@R	PMA Consultants, LLC	Perkins Eastman/DPC	Lee Kennedy Co., Inc.	Symmes, Maini & McKee Associates
2021	202100350505	Boston	Boston Day and Evening Academy	Construction	Accelerated Repair	Windows / Doors	DBB	Accenture, PLC (fka Anser Advisory)	Habeeb & Associates Architects, Inc.	GVW, Inc.	Gale Associates, Inc.
2016	201600350560	Boston	Boston Latin School	Closeout	Accelerated Repair	Boiler	DBB	NV5 (fka Joslin, Lesser + Associates Inc.)	ICON architecture, inc.	NB Kenney Company, Inc	Rist-Frost-Shumway Engineering, P.C.
2017	201700350036	Boston	Carter School	Building Complete	Core Program	New Construction	CM@R	LiRo-Hill, Corp. (fka Hill International)	Perkins+Will	Bond Brothers, Inc.	NV5 (RDK) Symmes, Maini & McKee Associates
2016	201600350360	Boston	Channing Elementary School	Closeout	Accelerated Repair	Boiler	DBB	NV5 (fka Joslin, Lesser + Associates Inc.)	ICON architecture, inc.	NB Kenney Company, Inc	Rist-Frost-Shumway Engineering, P.C.
2016	201600350146	Boston	Condon K-8 School	Closeout	Accelerated Repair	Boiler	DBB	NV5 (fka Joslin, Lesser + Associates Inc.)	ICON architecture, inc.	NB Kenney Company, Inc	Rist-Frost-Shumway Engineering, P.C.
2019	201900350020	Boston	Curley K-8 School	Final Audit Approved	Accelerated Repair	Roof	DBB	NETCO Construction Project Managers, Inc.	Raymond Design Associates, Inc.	Reliable Roofing and Sheet Metal, LLC	Building Enclosure Associates, LLC (VPC)
2016	201600350268	Boston	Dever Elementary School	Closeout	Accelerated Repair	Roof	DBB	NV5 (fka Joslin, Lesser + Associates Inc.)	ICON architecture, inc.	Gibson Roofs, Inc.	Simpson Gumpertz & Heger Inc.
2017	201700350530	Boston	East Boston High School	Closeout	Accelerated Repair	Boiler	DBB	The Vertex Companies, LLC	The S/L/A/M Collaborative	Enterprise Equipment Co., Inc.	Rist-Frost-Shumway Engineering, P.C.
2022	202200350535	Boston	English High School	Construction	Accelerated Repair	Windows / Doors	DBB	NV5 (fka Joslin, Lesser + Associates Inc.)	CSS Architects Incorporated	Lambrian Construction Corp.	3IVE LLC
2024	202400350088	Boston	Everett Elementary School	Design Development	Accelerated Repair	Windows / Doors		Atlantic Construction and Management, Inc.	Matz Collaborative Architects, Inc.	-	NV5 (RDK)
2024	202400350326	Boston	Gardner Pilot Academy	Design Development	Accelerated Repair	Windows / Doors		P3 Inc.	Kaestle Boos Associates, Inc.	-	Terva Engineering Corporation
2022	202200350077	Boston	Haley Pilot School	Construction	Accelerated Repair	Boiler	DBB	NV5 (fka Joslin, Lesser + Associates Inc.)	CSS Architects Incorporated	Patrick J. Kennedy & Sons Inc.	Bard, Rao + Athanas Consulting Engineers, LLC
2021	202100350426	Boston	Henderson K-12 Inclusion School Upper	Construction	Accelerated Repair	Boiler	DBB	Accenture, PLC (fka Anser Advisory)	Habeeb & Associates Architects, Inc.	Northern Contracting	Consulting Engineering Services, LLC
2022	202200350426	Boston	Henderson K-12 Inclusion School Upper	Construction	Accelerated Repair	Roof	DBB	NV5 (fka Joslin, Lesser + Associates Inc.)	CSS Architects Incorporated	Wayne Roofing Systems, LLC	3IVE LLC
2018	201800350691	Boston	Hernandez K-8 School	Closeout	Accelerated Repair	Boiler	DBB	NV5 (fka Joslin, Lesser + Associates Inc.)	CSS Architects Incorporated	Enterprise Equipment Co., Inc.	Fitzmeyer & Tocci Associates, Inc.
2021	202100350691	Boston	Hernandez K-8 School	Construction	Accelerated Repair	Windows / Doors	DBB	Accenture, PLC (fka Anser Advisory)	Habeeb & Associates Architects, Inc.	GVW, Inc.	Gale Associates, Inc.
2025	202500350182	Boston	Hurley K-8 School	Eligibility Period	Accelerated Repair	Roof		-	-	-	-
2017	201700350178	Boston	John Marshall	Closeout	Accelerated Repair	Windows / Doors	DBB	The Vertex Companies, LLC	The S/L/A/M Collaborative	WCI Corp.	Simpson Gumpertz & Heger Inc.
2024	202400350328	Boston	Kenny Elementary School	Design Development	Accelerated Repair	Roof		Watermark Environmental, Inc.	TSKP Studio, LLC	-	-
2025	202500350190	Boston	Kilmer K-8 School	Eligibility Period	Accelerated Repair	Windows / Doors		-	-	-	-
2018	201800350262	Boston	Lyndon K-8 School	Closeout	Accelerated Repair	Boiler	DBB	NV5 (fka Joslin, Lesser + Associates Inc.)	CSS Architects Incorporated	Enterprise Equipment Co., Inc.	Fitzmeyer & Tocci Associates, Inc.
2024	202400350262	Boston	Lyndon K-8 School	Design Development	Accelerated Repair	Windows / Doors		P3 Inc.	Kaestle Boos Associates, Inc.	-	Terva Engineering Corporation
2019	201900350655	Boston	Lyon High School	Final Audit Approved	Accelerated Repair	Boiler	DBB	NETCO Construction Project Managers, Inc.	Raymond Design Associates, Inc.	Enterprise Equipment Co., Inc.	Fitzmeyer & Tocci Associates, Inc.
2025	202500350655	Boston	Lyon High School	Eligibility Period	Accelerated Repair	Windows / Doors		-	-	-	-
2025	202500350537	Boston	Madison Park Technical Vocational High School	Eligibility Period	Core Program			-	-	-	-
2025	202500350549	Boston	Margarita Muniz Academy	Eligibility Period	Accelerated Repair	Heat Pump		-	-	-	-
2018	201800350080	Boston	McKay K-8 School	Closeout	Accelerated Repair	Boiler	DBB	NV5 (fka Joslin, Lesser + Associates Inc.)	CSS Architects Incorporated	Enterprise Equipment Co., Inc.	Fitzmeyer & Tocci Associates, Inc.
2019	201900350363	Boston	Melvin H. King South End Academy	Final Audit Approved	Accelerated Repair	Roof	DBB	NETCO Construction Project Managers, Inc.	Raymond Design Associates, Inc.	Reliable Roofing and Sheet Metal, LLC	Building Enclosure Associates, LLC (VPC)
2025	202500350100	Boston	Mendell Elementary School	Eligibility Period	Accelerated Repair	Windows / Doors		-	-	-	-

Date of Report: 3/24/2026

Total Projects: 436

SOI	MSBA ID	District	School	Project Phase	Project Type	Project Scope	Procurement Type	OPM	Designer	CM/GC	Commissioning Consultant
2025	202500350378	Boston	Mildred Avenue K-8 School	Eligibility Period	Accelerated Repair	Roof		-	-	-	-
2024	202400350240	Boston	Murphy K-8 School	Design Development	Accelerated Repair	Windows / Doors		Atlantic Construction and Management, Inc.	Matz Collaborative Architects, Inc.	-	NV5 (RDK)
2018	201800350575	Boston	O'Bryant School of Math & Science	Closeout	Accelerated Repair	Windows / Doors	DBB	NV5 (fka Joslin, Lesser + Associates Inc.)	CSS Architects Incorporated	GVW, Inc.	Simpson Gumpertz & Heger Inc.
2017	201700350141	Boston	O'Donnell Elementary School	Closeout	Accelerated Repair	Boiler	DBB	The Vertex Companies, LLC	The S/L/A/M Collaborative	Enterprise Equipment Co., Inc.	Rist-Frost-Shumway Engineering, P.C.
2024	202400350141	Boston	O'Donnell Elementary School	Design Development	Accelerated Repair	Roof		Watermark Environmental, Inc.	TSKP Studio, LLC	-	-
2025	202500350257	Boston	Orchard Gardens K-8 School	Eligibility Period	Accelerated Repair	Heat Pump, Roof		-	-	-	-
2018	201800350156	Boston	Otis Elementary School	Closeout	Accelerated Repair	Windows / Doors	DBB	NV5 (fka Joslin, Lesser + Associates Inc.)	CSS Architects Incorporated	GVW, Inc.	Simpson Gumpertz & Heger Inc.
2018	201800350286	Boston	Quincy Elementary School	Closeout	Accelerated Repair	Boiler	DBB	NV5 (fka Joslin, Lesser + Associates Inc.)	CSS Architects Incorporated	Enterprise Equipment Co., Inc.	Fitzmeyer & Tocci Associates, Inc.
2010	201000350565	Boston	Quincy Upper School	Building Complete	Core Program	New Construction	CM@R	Skanska USA Building, Inc	HMFH Architects, Inc.	Turner Construction Company	Rist-Frost-Shumway Engineering, P.C. Symmes, Maini & McKee Associates
2017	201700350366	Boston	Russell Elementary School	Closeout	Accelerated Repair	Roof	DBB	The Vertex Companies, LLC	The S/L/A/M Collaborative	Reliable Roofing and Sheet Metal, LLC	Simpson Gumpertz & Heger Inc.
2021	202100350366	Boston	Russell Elementary School	Construction	Accelerated Repair	Boiler	DBB	Accenture, PLC (fka Anser Advisory)	Habeeb & Associates Architects, Inc.	Northern Contracting	Consulting Engineering Services, LLC
2016	201600350179	Boston	Ruth Batson Academy	Closeout	Accelerated Repair	Roof	DBB	NV5 (fka Joslin, Lesser + Associates Inc.)	ICON architecture, inc.	Gibson Roofs, Inc.	Simpson Gumpertz & Heger Inc.
2024	202400350179	Boston	Ruth Batson Academy	Eligibility Period	Core Program			-	-	-	-
2023	202300350014	Boston	Shaw-Taylor Elementary School	Designer Selection	Core Program			Skanska USA Building, Inc	-	-	-
2017	201700350052	Boston	Sumner Elementary School	Closeout	Accelerated Repair	Boiler	DBB	The Vertex Companies, LLC	The S/L/A/M Collaborative	Enterprise Equipment Co., Inc.	Rist-Frost-Shumway Engineering, P.C.
2017	201700350229	Boston	Tobin K-8 School	Closeout	Accelerated Repair	Boiler	DBB	The Vertex Companies, LLC	The S/L/A/M Collaborative	Enterprise Equipment Co., Inc.	Rist-Frost-Shumway Engineering, P.C.
2025	202500360325	Bourne	Bourne Middle School	OPM Selection	Accelerated Repair	Roof		-	-	-	-
2024	202400380005	Boxford	Harry Lee Cole	Design Development	Accelerated Repair	Roof		LiRo-Hill, Corp. (fka Hill International)	EDM Engineering & Landscape Architecture, P.C	-	R.J. Kenney Associates, Inc.
2013	201300400305	Braintree	East Middle School	Final Audit Approved	Core Program	Addition / Renovation	CM@R	LiRo-Hill, Corp. (fka Hill International)	Miller Dyer Spears Inc.	Shawmut Design and Construction	Fitzmeyer & Tocci Associates, Inc.
2020	202000400015	Braintree	Highlands	Final Audit Approved	Accelerated Repair	Roof	DBB	P3 Inc.	Johnson Roberts Associates, Inc.	Gibson Roofs, Inc.	Simpson Gumpertz & Heger Inc.
2020	202000400025	Braintree	Liberty	Final Audit Approved	Accelerated Repair	Roof	DBB	P3 Inc.	Johnson Roberts Associates, Inc.	Capeway Roofing Systems, Inc.	Simpson Gumpertz & Heger Inc.
2016	201600400310	Braintree	South Middle School	Building Complete	Core Program	New Construction	DBB	LiRo-Hill, Corp. (fka Hill International)	Miller Dyer Spears Inc.	Bacon Construction Co, Inc.	Rist-Frost-Shumway Engineering, P.C.
2016	201606250002	Bridgewater-Raynham	Mitchell Elementary School	Closeout	Core Program	New Construction	DBB	CHA Consulting, Inc.	Raymond Design Associates, Inc.	Bacon Construction Co, Inc.	Consulting Engineering Services, LLC
2017	201708100605	Bristol-Plymouth Regional Voc Tech	Bristol-Plymouth Vocational Technical	Construction	Core Program	New Construction	DBB	PMA Consultants, LLC	HMFH Architects, Inc.	Consigli Construction Company, Inc.	BVH Integrated Services, P.C.
2022	202200440505	Brockton	Brockton High	Feasibility Study	Core Program			Leftfield, LLC	Kaestle Boos Associates, Inc.	-	-
2018	201800460040	Brookline	Pierce	Construction	Core Program	Addition / Renovation	CM@R	Leftfield, LLC	Miller Dyer Spears Inc.	Consigli Construction Company, Inc.	NV5 (RDK)
2020	202000480007	Burlington	Fox Hill	Construction	Core Program	New Construction	DBB	Dore & Whittier Management Partners, Inc.	DiNisco Design, Inc.	-	SMRT INC D/B/A SMRT ARCHITECTS & EnGINEERS

Date of Report: 3/24/2026

Total Projects: 436

SOI	MSBA ID	District	School	Project Phase	Project Type	Project Scope	Procurement Type	OPM	Designer	CM/GC	Commissioning Consultant
2022	202200490006	Cambridge	Amigos School	Closeout	Accelerated Repair	Roof	DBB	LIRo-Hill, Corp. (fka Hill International)	CIVITECTS PC	Triumph Leasing Corporation	R.J. Kenney Associates, Inc.
2020	202000490007	Cambridge	Cambridgeport	Closeout	Accelerated Repair	Windows / Doors	DBB	Atlantic Construction and Management, Inc.	Kaestle Boos Associates, Inc.	Lizotte Glass	Simpson Gumpertz & Heger Inc.
2025	202500490007	Cambridge	Cambridgeport	Eligibility Period	Accelerated Repair	Roof	-	-	-	-	-
2025	202500500020	Canton	Dean S Luce	Eligibility Period	Accelerated Repair	Roof	-	-	-	-	-
2021	202100500305	Canton	Wm H Galvin Middle	Design Development	Core Program	New Construction	CM@R	Leftfield, LLC	Ai3 Architects LLC	Consigli Construction Company, Inc.	Affiliated Engineers, Inc
2015	201506350505	Central Berkshire	Wahconah Regional High	Closeout	Core Program	New Construction	CM@R	Skanska USA Building, Inc	Drumme Rosane Anderson, Inc.	Barr & Barr Inc.	Horizon Engineering Associates, LLP
2023	202300560305	Chelmsford	Col Moses Parker School	Feasibility Study	Core Program			Leftfield, LLC	Ai3 Architects LLC	-	-
2024	202400560015	Chelmsford	South Row	Construction	Accelerated Repair	Roof		PCA 360	Socotec AE Consulting, LLC fka. CBI Consulting LLC	-	3IVE LLC
2022	202200610003	Chicopee	Barry	Schematic Design	Core Program	New Construction		Colliers Project Leaders NE, LLC	Caolo & Bieniek Associates, Inc.	-	-
2020	202000640305	Clinton	Clinton Middle School	Construction	Core Program	New Construction	CM@R	Dore & Whittier Management Partners, Inc.	Lamoureux Pagano Associates Architects, Inc.	Fontaine Brothers, Inc.	Rist-Frost-Shumway Engineering, P.C.
2025	202500650505	Cohasset	Cohasset High School	Eligibility Period	Core Program			-	-	-	-
2024	202400650010	Cohasset	Joseph Osgood	Design Development	Accelerated Repair	Roof		Next Level OPM, LLC	Raymond Design Associates, Inc.	-	BVH Integrated Services, P.C.
2025	202500720505	Dartmouth	Dartmouth High	Eligibility Period	Accelerated Repair	Roof		-	-	-	-
2015	201506450305	Dennis-Yarmouth	Dennis-Yarmouth Middle School	Building Complete	Core Program	New Construction	DBB	PMA Consultants, LLC	Perkins Eastman/DPC	Commodore Builders Corporation	Consulting Engineering Services, LLC
2024	202406450015	Dennis-Yarmouth	Marguerite E Small Elementary	OPM Selection	Core Program			-	-	-	-
2023	202306500005	Dighton-Rehoboth	Dighton Elementary	Feasibility Study	Core Program			Skanska USA Building, Inc	Arrowstreet Inc.	-	-
2025	202500770005	Douglas	Douglas Primary School	Eligibility Period	Accelerated Repair	Roof, Windows / Doors		-	-	-	-
2021	202100790020	Dracut	Joseph A Campbell Elementary	Approved Project Vote Pending	Core Program	New Construction		LIRo-Hill, Corp. (fka Hill International)	Mount Vernon Group Architects, Inc.	-	-
2024	202400820004	Duxbury	Alden School	Eligibility Period	Core Program			-	-	-	-
2022	202200830005	East Bridgewater	Central	Design Development	Core Program	New Construction	CM@R	Leftfield, LLC	Raymond Design Associates, Inc.	-	-
2019	201900870505	East Longmeadow	East Longmeadow High	Construction	Core Program	New Construction	CM@R	Skanska USA Building, Inc	Jones Whitsett Architects, Inc.	Fontaine Brothers, Inc.	Horizon Engineering Associates, LLP
2024	202400870010	East Longmeadow	Mapleshade	Approved Project Vote Pending	Accelerated Repair	Roof		Colliers Project Leaders NE, LLC	Habeeb & Associates Architects, Inc.	-	-
2014	201400860010	Easthampton	Maple	Closeout	Core Program	New Construction	DBB	Colliers Project Leaders NE, LLC	Caolo & Bieniek Associates, Inc.	Fontaine Brothers, Inc.	Horizon Engineering Associates, LLP
2016	201600880003	Easton	Center School	Closeout	Core Program	New Construction	DBB	PMA Consultants, LLC	Perkins Eastman/DPC	Brait Builders Corp.	Symmes, Maini & McKee Associates
2025	202500910030	Erving	Erving Elementary	Eligibility Period	Accelerated Repair	Heat Pump, Roof		-	-	-	-
2023	202300930505	Everett	Everett High	Feasibility Study	Core Program			Leftfield, LLC	-	-	-
2021	202100930015	Everett	Webster School	Closeout	Accelerated Repair	Roof	DBB	Accenture, PLC (fka Anser Advisory)	Gorman Richardson Lewis Architects, Inc.	Corolla Contracting, Inc.	Building Enclosure Associates, LLC (VPC)
2014	201400950505	Fall River	B M C Durfee High	Final Audit Approved	Core Program	Addition / Renovation	CM@R	Leftfield, LLC	Ai3 Architects LLC	Suffolk Construction Company	Jacobs Engineering Group Inc.
2017	201700950140	Fall River	James Tansey	Closeout	Accelerated Repair	Boiler, Windows / Doors	DBB	exPERTcon, Inc.	Tighe & Bond, Inc.	Collins Construction Co., Inc.	Fitzmeyer & Tocci Associates, Inc. Thompson & Lichtner Co., Inc.

Date of Report: 3/24/2026

Total Projects: 436

SOI	MSBA ID	District	School	Project Phase	Project Type	Project Scope	Procurement Type	OPM	Designer	CM/GC	Commissioning Consultant
2018	201800950325	Fall River	Resiliency Preparatory Academy	Closeout	Accelerated Repair	Boiler, Roof	DBB	P3 Inc.	EDM Engineering & Landscape Architecture, P.C	Greenwood Industries, Inc.	Symmes, Maini & McKee Associates
2022	202200950325	Fall River	Resiliency Preparatory Academy	Construction	Accelerated Repair	Windows / Doors	DBB	STV DPM (fka STV Inc.)	The S/L/A/M Collaborative	S&L Specialty Contracting Inc	R.J. Kenney Associates, Inc.
2017	201700950145	Fall River	Samuel Watson	Closeout	Accelerated Repair	Boiler, Roof, Windows / Doors	DBB	exPERTcon, Inc.	Tighe & Bond, Inc.	J.J. Cardosi, Inc.	Fitzmeyer & Tocci Associates, Inc. Thompson & Lichtner Co., Inc.
2018	201800950150	Fall River	Westall Elementary	Final Audit Approved	Accelerated Repair	Boiler, Roof	DBB	P3 Inc.	EDM Engineering & Landscape Architecture, P.C	NB Kenney Company, Inc	Symmes, Maini & McKee Associates
2025	202500960405	Falmouth	Lawrence	Eligibility Period	Core Program			-	-	-	-
2021	202100970315	Fitchburg	Arthur M Longsjo Middle School	Closeout	Accelerated Repair	Windows / Doors	DBB	NV5 (fka Joslin, Lesser + Associates Inc.)	Mount Vernon Group Architects, Inc.	Lizotte Glass	3IVE LLC
2022	202200970315	Fitchburg	Arthur M Longsjo Middle School	Construction	Accelerated Repair	Boiler	DBB	P3 Inc.	IMEG Consultant Corp.	Thielsch Engineering, Inc.	WSP USA
2016	201600970016	Fitchburg	Crocker Elementary	Building Complete	Core Program	New Construction	DBB	Colliers Project Leaders NE, LLC	saam architecture	Fontaine Brothers, Inc.	Horizon Engineering Associates, LLP
2025	202500990050	Foxborough	Charles Taylor Elementary	Eligibility Period	Core Program			-	-	-	-
2015	201500990015	Foxborough	Mabelle M Burrell	Final Audit Approved	Core Program	Addition / Renovation	DBB	Colliers Project Leaders NE, LLC	Kaestle Boos Associates, Inc.	CTA Construction Co., Inc.	Cadmus Group LLC
2025	202501000006	Framingham	Brophy	OPM Selection	Accelerated Repair	Roof		-	-	-	-
2015	201501000305	Framingham	Fuller Middle	Final Audit Approved	Core Program	New Construction	CM@R	Symmes Maini & McKee Associates, Inc.	Jonathan Levi Architects LLC	Consigli Construction Company, Inc.	Jacobs Engineering Group Inc.
2023	202301000015	Framingham	Hemenway	Feasibility Study	Core Program			The Vertex Companies, LLC	Tappe Architects, Inc.	-	-
2025	202501000039	Framingham	Potter Road	Eligibility Period	Accelerated Repair	Roof		-	-	-	-
2022	202208180605	Franklin County Regional Voc Tech	Franklin County Technical Assawompset Elementary School	Schematic Design	Core Program	New Construction		Colliers Project Leaders NE, LLC	LaVallee Brensinger Architects	-	-
2021	202106650002	Freetown-Lakeville	Franklin County Technical Assawompset Elementary School	Final Audit Approved	Accelerated Repair	Windows / Doors	DBB	Watermark Environmental, Inc.	The S/L/A/M Collaborative	NENA Construction, Inc.	Building Enclosure Associates, LLC (VPC)
2024	202401030405	Gardner	Gardner Middle School	Design Development	Accelerated Repair	Roof		Symmes Maini & McKee Associates, Inc.	Tighe & Bond, Inc.	-	SMRT INC D/B/A SMRT ARCHITECS & EnGINEERS
2016	201601030020	Gardner	Waterford Street	Final Audit Approved	Core Program	New Construction	DBB	Colliers Project Leaders NE, LLC	Jones Whitsett Architects, Inc.	Bacon Construction Co, Inc.	Fitzmeyer & Tocci Associates, Inc.
2024	202406740005	Gill-Montague	Gill Elementary	Approved Project Vote Pending	Accelerated Repair	Roof		Jones Lang LaSalle Boston	Gorman Richardson Lewis Architects, Inc.	-	-
2025	202506740050	Gill-Montague	Sheffield Elementary School	Eligibility Period	Core Program			-	-	-	-
2016	201601070020	Gloucester	East Gloucester Elementary	Closeout	Core Program	New Construction	CM@R	Turner & Townsend Heery	Dore & Whittier Architects, Inc.	W. T. Rich Company Inc.	NV5 (RDK) Socotec AE Consulting, LLC fka. CBI Consulting LLC
2021	202101070305	Gloucester	Ralph B O'Maley Middle	Closeout	Accelerated Repair	Windows / Doors	DBB	Leftfield, LLC	CIVITECTS PC	Lambrian Construction Corp.	
2017	201708210605	Greater Fall River Regional Voc Tech	Diman Regional Vocational Technical High	Construction	Core Program	New Construction	CM@R	Colliers Project Leaders NE, LLC	Kaestle Boos Associates, Inc.	Suffolk Construction Company	WSP USA
2017	201706730010	Groton-Dunstable	Florence Roche School	Closeout	Core Program	New Construction	CM@R	Leftfield, LLC	Studio G. Architects, Inc.	Gilbane Building Company	NV5 (RDK)
2025	202506730005	Groton-Dunstable	Swallow/Union School	Eligibility Period	Accelerated Repair	Roof		-	-	-	-
2024	202406750505	Hamilton-Wenham	Hamilton-Wenham Regional High	Approved Project Vote Pending	Accelerated Repair	Roof		P3 Inc.	Gale Associates, Inc.	-	SMRT INC D/B/A SMRT ARCHITECS & EnGINEERS
2025	202506800025	Hampden-Wilbraham	Mile Tree Elementary	Eligibility Period	Accelerated Repair	Roof		-	-	-	-
2025	202506800050	Hampden-Wilbraham	Stony Hill School	Eligibility Period	Accelerated Repair	Roof		-	-	-	-

Date of Report: 3/24/2026

Total Projects: 436

SOI	MSBA ID	District	School	Project Phase	Project Type	Project Scope	Procurement Type	OPM	Designer	CM/GC	Commissioning Consultant
2025	202506800310	Hampden-Wilbraham	Wilbraham Middle	Eligibility Period	Accelerated Repair	Windows / Doors	-	-	-	-	-
2015	201501250005	Harvard	Hildreth Elementary School	Closeout	Core Program	New Construction	CM@R	NV5 (fka Joslin, Lesser + Associates Inc.)	Arrowstreet Inc.	Shawmut Design and Construction	Bard, Rao + Athanas Consulting Engineers, LLC
2025	202501250505	Harvard	The Bromfield High School	Schematic Design	Accelerated Repair	Heat Pump, Roof	-	-	-	-	-
2018	201801280100	Haverhill	Consentino Middle School	Construction	Core Program	New Construction	DBB	Colliers Project Leaders NE, LLC	Dore & Whittier Architects, Inc.	Brait Builders Corp.	Fitzmeyer & Tocci Associates, Inc.
2025	202501280026	Haverhill	Golden Hill	OPM Selection	Accelerated Repair	Roof	-	-	-	-	-
2023	202301280085	Haverhill	John G Whittier	Designer Selection	Core Program	-	-	CHA Consulting, Inc.	-	-	-
2022	202201280045	Haverhill	Moody	Closeout	Accelerated Repair	Boiler	DBB	The Vertex Companies, LLC	NV5 (fka Joslin, Lesser + Associates Inc.)	Boston Mechanical Inc.	Fitzmeyer & Tocci Associates, Inc.
2022	202201280067	Haverhill	Silver Hill Elementary School	Closeout	Accelerated Repair	Boiler	DBB	The Vertex Companies, LLC	NV5 (fka Joslin, Lesser + Associates Inc.)	AAlanco Service Corporation	Fitzmeyer & Tocci Associates, Inc.
2024	202401280067	Haverhill	Silver Hill Elementary School	Approved Project Vote Pending	Accelerated Repair	Roof	-	CSL Consulting	The S/L/A/M Collaborative	-	-
2025	202501310505	Hingham	Hingham High	Schematic Design	Accelerated Repair	Heat Pump, Roof	-	Jones Lang LaSalle Boston	Dietz & Company Architects, Inc.	-	-
2020	202001310019	Hingham	Plymouth River	Closeout	Accelerated Repair	Windows / Doors	DBB	Architectural Consulting Group, LLC	Turowski2 Architecture, Inc.	Homer Contracting	R.J. Kenney Associates, Inc.
2025	202501310019	Hingham	Plymouth River	Schematic Design	Accelerated Repair	Roof	-	P3 Inc.	-	-	-
2025	202501310020	Hingham	South Elementary	Schematic Design	Accelerated Repair	Roof	-	P3 Inc.	Gale Associates, Inc.	-	-
2019	201901310010	Hingham	Wm L Foster Elementary	Building Complete	Core Program	New Construction	DBB	PMA Consultants, LLC	Raymond Design Associates, Inc.	Bacon Construction Co, Inc.	Jacobs Engineering Group Inc.
2025	202501360505	Holliston	Holliston High	Eligibility Period	Core Program	-	-	-	-	-	-
2025	202501360007	Holliston	Miller School	Eligibility Period	Accelerated Repair	Roof	-	-	-	-	-
2025	202501360010	Holliston	Placentino Elementary	Eligibility Period	Accelerated Repair	Roof	-	-	-	-	-
2020	202001370045	Holyoke	E N White Elementary	Closeout	Accelerated Repair	Roof	DBB	JACOBS Project Management Co.	ICON architecture, inc.	W.J. Mountford Company	Building Enclosure Associates, LLC (VPC)
2022	202201370070	Holyoke	H.B. Lawrence School	Closeout	Accelerated Repair	Windows / Doors	DBB	Leftfield, LLC	Habeeb & Associates Architects, Inc.	R&R Window Contractors, Inc.	Building Enclosure Associates, LLC (VPC)
2024	202401370505	Holyoke	Holyoke High	Design Development	Accelerated Repair	Roof	-	PCA 360	Mount Vernon Group Architects, Inc.	-	Affiliated Engineers, Inc
2024	202401370040	Holyoke	Kelly Elementary	Design Development	Accelerated Repair	Roof	-	PCA 360	Mount Vernon Group Architects, Inc.	-	Affiliated Engineers, Inc
2020	202001370055	Holyoke	Lt Clayre Sullivan Elementary	Closeout	Accelerated Repair	Roof	DBB	JACOBS Project Management Co.	ICON architecture, inc.	W.J. Mountford Company	Building Enclosure Associates, LLC (VPC)
2024	202401370055	Holyoke	Lt Clayre Sullivan Elementary	Design Development	Accelerated Repair	Roof	-	Atlantic Construction and Management, Inc.	CSS Architects Incorporated	-	Terva Engineering Corporation
2022	202201370015	Holyoke	Lt Elmer J McMahon Elementary	Closeout	Accelerated Repair	Windows / Doors	DBB	Leftfield, LLC	Habeeb & Associates Architects, Inc.	Lizotte Glass	Building Enclosure Associates, LLC (VPC)
2024	202401370015	Holyoke	Lt Elmer J McMahon Elementary	Design Development	Accelerated Repair	Roof	-	PCA 360	Mount Vernon Group Architects, Inc.	-	Affiliated Engineers, Inc
2025	202501370015	Holyoke	Lt Elmer J McMahon Elementary	Eligibility Period	Accelerated Repair	Windows / Doors	-	-	-	-	-
2020	202001370060	Holyoke	Maurice A Donahue Elementary	Closeout	Accelerated Repair	Roof	DBB	JACOBS Project Management Co.	ICON architecture, inc.	W.J. Mountford Company	Building Enclosure Associates, LLC (VPC)
2022	202201370060	Holyoke	Maurice A Donahue Elementary	Closeout	Accelerated Repair	Windows / Doors	DBB	Leftfield, LLC	Habeeb & Associates Architects, Inc.	Lizotte Glass	Building Enclosure Associates, LLC (VPC)
2024	202401370060	Holyoke	Maurice A Donahue Elementary	Design Development	Accelerated Repair	Roof	-	Atlantic Construction and Management, Inc.	CSS Architects Incorporated	-	Terva Engineering Corporation
2025	202501370060	Holyoke	Maurice A Donahue Elementary	Eligibility Period	Accelerated Repair	Windows / Doors	-	-	-	-	-
2020	202001370030	Holyoke	William R. Peck School	Construction	Core Program	New Construction - Model School	DBB	Accenture, PLC (fka Anser Advisory)	Mount Vernon Group Architects, Inc.	Fontaine Brothers, Inc.	Van Zelm Heywood & Shadford, Inc.
2022	202201370605	Holyoke	Wm J Dean Vocational Technical High	Closeout	Accelerated Repair	Boiler	DBB	Leftfield, LLC	Habeeb & Associates Architects, Inc.	Adams Plumbing and Heating, Inc.	Van Zelm Heywood & Shadford, Inc.

Date of Report: 3/24/2026

Total Projects: 436

SOI	MSBA ID	District	School	Project Phase	Project Type	Project Scope	Procurement Type	OPM	Designer	CM/GC	Commissioning Consultant
2020	202001390010	Hopkinton	Elmwood	Construction	Core Program	New Construction	DBB	Compass Project Management, Inc.	Perkins Eastman/DPC	Brait Builders Corp.	Fitzmeyer & Tocci Associates, Inc.
2024	202401440007	Ipswich	Paul F Doyon Memorial	Eligibility Period	Core Program			-	-	-	-
2025	202506900510	King Philip	King Philip Middle School	Eligibility Period	Accelerated Repair	Heat Pump, Roof		-	-	-	-
2025	202506900505	King Philip	King Philip Regional High	Eligibility Period	Accelerated Repair	Heat Pump, Roof		-	-	-	-
2024	202401450005	Kingston	Kingston Elementary	Design Development	Accelerated Repair	Roof		Atlantic Construction and Management, Inc.	Mount Vernon Group Architects, Inc.	-	Building Enclosure Science
2025	202501490007	Lawrence	Arlington	OPM Selection	Accelerated Repair	Windows / Doors		-	-	-	-
2017	201701490040	Lawrence	Francis M Leahy	Building Complete	Core Program	New Construction	DBB	Atlantic Construction and Management, Inc.	Mount Vernon Group Architects, Inc.	J & J Contractors, Inc.	Jacobs Engineering Group Inc.
2025	202501490525	Lawrence	Frost Middle School	OPM Selection	Accelerated Repair	Roof		-	-	-	-
2016	201601490050	Lawrence	Henry K Oliver	Building Complete	Core Program	Addition / Renovation	CM@R	Accenture, PLC (fka Anser Advisory)	Symmes Maini & McKee Associates, Inc.	Consigli Construction Company, Inc.	Rist-Frost-Shumway Engineering, P.C.
2025	202501490004	Lawrence	South Lawrence East Elementary School	OPM Selection	Accelerated Repair	Roof		-	-	-	-
2025	202501500025	Lee	Lee Elementary	Eligibility Period	Accelerated Repair	Roof		-	-	-	-
2025	202501500505	Lee	Lee Middle/High School	Eligibility Period	Accelerated Repair	Roof		-	-	-	-
2023	202301510505	Leicester	Leicester High	Feasibility Study	Core Program			Terva Corporation	Raymond Design Associates, Inc.	-	-
2021	202101530007	Leominster	Fall Brook	Design Development	Core Program	New Construction	DBB	Leftfield, LLC	Miller Dyer Spears Inc.	-	Fitzmeyer & Tocci Associates, Inc.
2021	202101550505	Lexington	Lexington High	Design Development	Core Program	Addition / Renovation	CM@R	Dore & Whittier Management Partners, Inc.	Symmes Maini & McKee Associates, Inc.	Turner Construction Company	SMRT INC D/B/A SMRT ARCHITECTS & EnGiNEERS
2015	201501550035	Lexington	Maria Hastings	Closeout	Core Program	New Construction	CM@R	Dore & Whittier Management Partners, Inc.	DiNisco Design, Inc.	Walsh Brothers, Inc.	Bard, Rao + Athanas Consulting Engineers, LLC
2021	202101580005	Littleton	Shaker Lane Elementary	Design Development	Core Program	New Construction		Turner & Townsend Heery	Studio G. Architects, Inc.	-	Terva Engineering Corporation
2024	202401590010	Longmeadow	Center	Approved Project Vote Pending	Accelerated Repair	Roof		Skanska USA Building, Inc	Johnson Roberts Associates, Inc.	-	-
2025	202501590010	Longmeadow	Center	OPM Selection	Accelerated Repair	Windows / Doors		-	-	-	-
2021	202101590017	Longmeadow	Glenbrook Middle	Design Development	Core Program	New Construction	CM@R	Colliers Project Leaders NE, LLC	Jones Whitsett Architects, Inc.	Fontaine Brothers, Inc.	Building Evolution Corporation
2022	202201600310	Lowell	B.F. Butler Middle School	Construction	Accelerated Repair	Boiler	DBB	Watermark Environmental, Inc.	EDM Engineering & Landscape Architecture, P.C	Fraser Engineering Company, Inc.	Rist-Frost-Shumway Engineering, P.C.
2025	202501600310	Lowell	B.F. Butler Middle School	Eligibility Period	Accelerated Repair	Roof, Windows / Doors		-	-	-	-
2022	202201600090	Lowell	Bartlett Community Partnership	Construction	Accelerated Repair	Boiler	DBB	Watermark Environmental, Inc.	EDM Engineering & Landscape Architecture, P.C	Patrick J. Kennedy & Sons Inc.	Rist-Frost-Shumway Engineering, P.C.
2025	202501600090	Lowell	Bartlett Community Partnership	Eligibility Period	Accelerated Repair	Roof, Windows / Doors		-	-	-	-
2021	202101600345	Lowell	Dr An Wang School	Closeout	Accelerated Repair	Roof, Boiler	DBB	Arcadis U.S., Inc.	EDM Engineering & Landscape Architecture, P.C	Greenwood Industries, Inc.	WSP USA
2025	202501600002	Lowell	Dr Gertrude Bailey	Eligibility Period	Accelerated Repair	Windows / Doors		-	-	-	-
2025	202501600015	Lowell	Greenhalge	Eligibility Period	Accelerated Repair	Roof, Windows / Doors		-	-	-	-
2021	202101600330	Lowell	Henry J Robinson Middle	Closeout	Accelerated Repair	Roof, Windows / Doors	DBB	Arcadis U.S., Inc.	EDM Engineering & Landscape Architecture, P.C	Greenwood Industries, Inc.	WSP USA
2022	202201600330	Lowell	Henry J Robinson Middle	Construction	Accelerated Repair	Boiler	DBB	Watermark Environmental, Inc.	EDM Engineering & Landscape Architecture, P.C	Fraser Engineering Company, Inc.	Rist-Frost-Shumway Engineering, P.C.

Date of Report: 3/24/2026

Total Projects: 436

SOI	MSBA ID	District	School	Project Phase	Project Type	Project Scope	Procurement Type	OPM	Designer	CM/GC	Commissioning Consultant
2025	202501600315	Lowell	James S Daley Middle School	Eligibility Period	Accelerated Repair	Roof, Windows / Doors		-	-	-	-
2021	202101600050	Lowell	John J Shaughnessy	Closeout	Accelerated Repair	Boiler	DBB	Arcadis U.S., Inc.	EDM Engineering & Landscape Architecture, P.C	AAlanco Service Corporation	Fitzmeyer & Tocci Associates, Inc.
2022	202201600050	Lowell	John J Shaughnessy	Construction	Accelerated Repair	Roof	DBB	Watermark Environmental, Inc.	EDM Engineering & Landscape Architecture, P.C	Capeway Roofing Systems, Inc.	3IVE LLC
2025	202501600050	Lowell	John J Shaughnessy	Eligibility Period	Accelerated Repair	Windows / Doors		-	-	-	-
2022	202201600010	Lowell	Joseph McAvinnue	Construction	Accelerated Repair	Boiler	DBB	Watermark Environmental, Inc.	EDM Engineering & Landscape Architecture, P.C	Fraser Engineering Company, Inc.	Rist-Frost-Shumway Engineering, P.C.
2025	202501600010	Lowell	Joseph McAvinnue	Eligibility Period	Accelerated Repair	Windows / Doors		-	-	-	-
2014	201401600505	Lowell	Lowell High	Construction	Core Program	Addition / Renovation	CM@R	Skanska USA Building, Inc	Perkins Eastman/DPC	Suffolk Construction Company	Bard, Rao + Athanas Consulting Engineers, LLC
2025	202501600005	Lowell	Rogers STEM Academy	Eligibility Period	Accelerated Repair	Roof, Windows / Doors		-	-	-	-
2021	202101600075	Lowell	S Christa McAuliffe Elementary	Closeout	Accelerated Repair	Roof	DBB	Arcadis U.S., Inc.	EDM Engineering & Landscape Architecture, P.C	Triumph Leasing Corporation	Building Enclosure Associates, LLC (VPC)
2015	201501610020	Ludlow	Chapin Street Elementary School	Closeout	Core Program	New Construction	DBB	STV DPM (fka STV Inc.)	Mount Vernon Group Architects, Inc.	Fontaine Brothers, Inc.	Horizon Engineering Associates, LLP
2022	202201630016	Lynn	A Drewicz Elementary	Design Development	Accelerated Repair	Windows / Doors	DBB	Colliers Project Leaders NE, LLC	Gorman Richardson Lewis Architects, Inc.	-	Socotec AE Consulting, LLC fka. CBI Consulting LLC
2021	202101630090	Lynn	Capt William G Shoemaker	Closeout	Accelerated Repair	Roof	DBB	Architectural Consulting Group, LLC	TSKP Studio, LLC	Capeway Roofing Systems, Inc.	Gale Associates, Inc.
2025	2025016300505	Lynn	Classical High	OPM Selection	Accelerated Repair	Roof		-	-	-	-
2024	202401630095	Lynn	Edward A Sisson	Design Development	Accelerated Repair	Windows / Doors		Architectural Consulting Group, LLC	BWA Architecture, Inc	-	Horizon Engineering Associates, LLP
2018	2018016300605	Lynn	Lynn Vocational Technical Institute	Closeout	Accelerated Repair	Roof	DBB	LiRo-Hill, Corp. (fka Hill International)	Russo Barr Associates, Inc.	Stanley Roofing Company, Inc.	Socotec AE Consulting, LLC fka. CBI Consulting LLC
2020	2020016300605	Lynn	Lynn Vocational Technical Institute	Closeout	Accelerated Repair	Windows / Doors	DBB	PMA Consultants, LLC	CIVITECTS PC	GVW, Inc.	Socotec AE Consulting, LLC fka. CBI Consulting LLC
2025	2025016300605	Lynn	Lynn Vocational Technical Institute	Eligibility Period	Accelerated Repair	Heat Pump		-	-	-	-
2020	202001630420	Lynn	Pickering Middle	Construction	Core Program	New Construction	CM@R	Leftfield, LLC	Raymond Design Associates, Inc.	Consigli Construction Company, Inc.	Jacobs Engineering Group Inc.
2025	202501630050	Lynn	Robert L Ford	OPM Selection	Accelerated Repair	Windows / Doors		-	-	-	-
2023	202306980020	Manchester Essex Regional	Essex Elementary	Feasibility Study	Core Program			Dore & Whittier Management Partners, Inc.	JCJ Architecture, PC	-	-
2015	201506980010	Manchester Essex Regional	Manchester Memorial Elementary	Closeout	Core Program	New Construction	CM@R	Dore & Whittier Management Partners, Inc.	JCJ Architecture, PC	W. T. Rich Company Inc.	Symmes, Maini & McKee Associates
2022	202201670035	Mansfield	Harold L Qualters Middle	Closeout	Accelerated Repair	Boiler	DBB	Architectural Consulting Group, LLC	Shekar & Associates, Inc.	Sterling Construction, Inc.	WSP USA
2025	202501670014	Mansfield	Jordan/Jackson Elementary	Eligibility Period	Accelerated Repair	Roof		-	-	-	-
2021	202101670505	Mansfield	Mansfield High	Closeout	Accelerated Repair	Boiler	DBB	LiRo-Hill, Corp. (fka Hill International)	BLW Engineers, Inc.	Veterans Development Corporation, Inc.	Bard, Rao + Athanas Consulting Engineers, LLC
2022	202201700025	Marlborough	Richer	Schematic Design	Core Program	New Construction		The Vertex Companies, LLC	Lamoureux Pagano Associates Architects, Inc.	-	-
2024	202401710025	Marshfield	Martinson Elementary	Design Development	Accelerated Repair	Roof		Accenture, PLC (fka Anser Advisory)	Kaestle Boos Associates, Inc.	-	-

Date of Report: 3/24/2026

Total Projects: 436

SOI	MSBA ID	District	School	Project Phase	Project Type	Project Scope	Procurement Type	OPM	Designer	CM/GC	Commissioning Consultant
2021	202107000505	Martha's Vineyard	Martha's Vineyard Regional High	Approved Project Vote Pending	Core Program	Addition / Renovation		CHA Consulting, Inc.	Tappe Architects, Inc.	-	-
2025	202507050505	Masconomet	Masconomet Regional High School	Eligibility Period	Accelerated Repair	Heat Pump, Roof		-	-	-	-
2025	202507050405	Masconomet	Masconomet Regional Middle School	Eligibility Period	Accelerated Repair	Heat Pump, Roof		-	-	-	-
2019	201901740010	Maynard	Green Meadow	Construction	Core Program	New Construction	DBB	Colliers Project Leaders NE, LLC	Mount Vernon Group Architects, Inc.	CTA Construction Managers, LLC	Rist-Frost-Shumway Engineering, P.C.
2024	202401750005	Medfield	Dale Street	OPM Selection	Core Program			-	-	-	-
2025	202501760130	Medford	Brooks School	Eligibility Period	Accelerated Repair	Heat Pump, Roof		-	-	-	-
2023	202301760505	Medford	Medford High	Feasibility Study	Core Program			Leftfield, LLC	Symmes Maini & McKee Associates, Inc.	-	-
2025	202501760150	Medford	Milton Fuller Roberts	OPM Selection	Accelerated Repair	Heat Pump, Roof		-	-	-	-
2025	202501760140	Medford	Missituk Elementary School	Eligibility Period	Accelerated Repair	Heat Pump, Roof		-	-	-	-
2025	202501780003	Melrose	Early Childhood Center	OPM Selection	Accelerated Repair	Roof, Windows / Doors		-	-	-	-
2021	202101780017	Melrose	Herbert Clark Hoover	Closeout	Accelerated Repair	Roof	DBB	The Vertex Companies, LLC	Tighe & Bond, Inc.	Gibson Roofs, Inc.	Russo Barr Associates, Inc.
2021	202101780025	Melrose	Horace Mann	Closeout	Accelerated Repair	Roof	DBB	The Vertex Companies, LLC	Tighe & Bond, Inc.	Greenwood Industries, Inc.	Russo Barr Associates, Inc.
2025	202501780505	Melrose	Melrose High	OPM Selection	Accelerated Repair	Roof		-	-	-	-
2024	202407100510	Mendon-Upton	Nipmuc Regional High	Design Development	Accelerated Repair	Roof		CHA Consulting, Inc.	CIVITECTS PC	-	-
2025	202501820305	Middleborough	John T. Nichols Middle	Schematic Design	Accelerated Repair	Roof		-	-	-	-
2024	202401840003	Middleton	Fuller Meadow	Approved Project Vote Pending	Accelerated Repair	Roof		GreenerU	Socotec AE Consulting, LLC fka. CBI Consulting LLC	-	Consulting Engineering Services, LLC
2023	202301850505	Milford	Milford High	Feasibility Study	Core Program			Next Level OPM, LLC	HMFH Architects, Inc.	-	-
2016	201601860025	Millbury	Raymond E. Shaw Elementary	Final Audit Approved	Core Program	New Construction	DBB	LiRo-Hill, Corp. (fka Hill International)	Turowski2 Architecture, Inc.	Fontaine Brothers, Inc.	Consulting Engineering Services, LLC
2021	202101870505	Millis	Millis High School	Design Development	Core Program	Addition / Renovation		The Vertex Companies, LLC	Tappe Architects, Inc.	-	BVH Integrated Services, P.C.
2024	202401890007	Milton	Cunningham School	OPM Selection	Core Program			-	-	-	-
2025	202507170505	Mohawk Trail	Mohawk Trail Regional School	Eligibility Period	Core Program			-	-	-	-
2025	202507120002	Monomoy	Harwich Elementary School	Eligibility Period	Accelerated Repair	Heat Pump, Roof		-	-	-	-
2024	202407120315	Monomoy	Monomoy Regional Middle School	Approved Project Vote Pending	Accelerated Repair	Roof		CSL Consulting	Gorman Richardson Lewis Architects, Inc.	-	-
2024	202407200305	Narragansett	Narragansett Middle	Design Development	Accelerated Repair	Roof		Symmes Maini & McKee Associates, Inc.	Next Phase Studios, Inc.	-	NV5 (RDK)
2024	202407200505	Narragansett	Narragansett Regional High	Design Development	Accelerated Repair	Roof		Symmes Maini & McKee Associates, Inc.	Symmes Maini & McKee Associates, Inc.	-	NV5 (RDK)
2019	201907250505	Nashoba	Nashoba Regional	Construction	Core Program	New Construction	CM@R	Skanska USA Building, Inc	Kaestle Boos Associates, Inc.	Consigli Construction Company, Inc.	NV5 (RDK)
2025	202508520605	Nashoba Valley Regional Voc Tech	Nashoba Valley Technical High School	OPM Selection	Accelerated Repair	Heat Pump, Roof		-	-	-	-
2025	202501980035	Natick	Lilja Elementary	Eligibility Period	Accelerated Repair	Heat Pump		-	-	-	-
2024	202401980043	Natick	Memorial	OPM Selection	Core Program			-	-	-	-
2016	201606600505	Nauset	Nauset Regional High	Construction	Core Program	Addition / Renovation	DBB	CHA Consulting, Inc.	Flansburgh Associates, Inc.	Brait Builders Corp.	Consulting Engineering Services, LLC
2023	202301990405	Needham	Pollard Middle	Schematic Design	Core Program	New Construction		-	HMFH Architects, Inc.	-	-
2024	202402010063	New Bedford	Alfred J Gomes	Approved Project Vote Pending	Accelerated Repair	Roof		Accenture, PLC (fka Anser Advisory)	EDM Engineering & Landscape Architecture, P.C	-	-

Date of Report: 3/24/2026

Total Projects: 436

SOI	MSBA ID	District	School	Project Phase	Project Type	Project Scope	Procurement Type	OPM	Designer	CM/GC	Commissioning Consultant
2024	202402010105	New Bedford	Carlos Pacheco	Design Development	Accelerated Repair	Roof		Architectural Consulting Group, LLC	-	-	Building Enclosure Science
2024	202402010123	New Bedford	Casimir Pulaski	Design Development	Accelerated Repair	Roof		Accenture, PLC (fka Anser Advisory)	EDM Engineering & Landscape Architecture, P.C	-	Colliers Project Leaders NE, LLC
2023	202302010010	New Bedford	Charles S Ashley	Feasibility Study	Core Program			P3 Inc.	Turowski2 Architecture, Inc.	-	-
2022	202202010015	New Bedford	Elizabeth Carter Brooks	Closeout	Accelerated Repair	Roof	DBB	PCA 360	CGKV Architects, Inc.	Capeway Roofing Systems, Inc.	Simpson Gumpertz & Heger Inc.
2022	202202010075	New Bedford	Ellen R Hathaway	Closeout	Accelerated Repair	Windows / Doors	DBB	PCA 360	CGKV Architects, Inc.	J.J. Cardosi, Inc.	Simpson Gumpertz & Heger Inc.
2024	202402010075	New Bedford	Ellen R Hathaway	Design Development	Accelerated Repair	Roof		Architectural Consulting Group, LLC	-	-	Building Enclosure Science
2020	202002010020	New Bedford	Elwyn G Campbell	Closeout	Accelerated Repair	Boiler, Windows / Doors	DBB	NV5 (fka Joslin, Lesser + Associates Inc.)	CSS Architects Incorporated	J.J. Cardosi, Inc.	WSP USA
2024	202402010020	New Bedford	Elwyn G Campbell	Design Development	Accelerated Repair	Roof		Architectural Consulting Group, LLC	-	-	Building Enclosure Science
2024	202402010078	New Bedford	Hayden/McFadden	Design Development	Accelerated Repair	Roof		Accenture, PLC (fka Anser Advisory)	EDM Engineering & Landscape Architecture, P.C	-	Colliers Project Leaders NE, LLC
2020	202002010050	New Bedford	John B Devalles	Construction	Core Program	New Construction	DBB	P3 in collaboration w/ Atlantic Construction & Mgt	Turowski2 Architecture, Inc.	J & J Contractors, Inc.	WSP USA
2024	202402010045	New Bedford	Sgt Wm H Carney Academy	Design Development	Accelerated Repair	Roof		Accenture, PLC (fka Anser Advisory)	EDM Engineering & Landscape Architecture, P.C	-	Colliers Project Leaders NE, LLC
2025	202502010510	New Bedford	Trinity Day Academy	Designer Selection	Accelerated Repair	Roof, Windows / Doors		Skanska USA Building, Inc	Gorman Richardson Lewis Architects, Inc.	-	-
2024	202402010515	New Bedford	Whaling City Junior/Senior High School	Design Development	Accelerated Repair	Roof		Architectural Consulting Group, LLC	-	-	Building Enclosure Science
2024	202402040505	Newburyport	Newburyport High	Approved Project Vote Pending	Accelerated Repair	Roof		P3 Inc.	Gannett Fleming Engineers and Architects, PC	-	-
2024	202402040305	Newburyport	Rupert A Nock Middle	Approved Project Vote Pending	Accelerated Repair	Roof		P3 Inc.	Gannett Fleming Engineers and Architects, PC	-	-
2020	202002070040	Newton	Countryside	Construction	Core Program	New Construction	DBB	Dore & Whittier Management Partners, Inc.	DiNisco Design, Inc.	CTA Construction Managers, LLC	Rist-Frost-Shumway Engineering, P.C.
2025	202502080005	Norfolk	Freeman-Kennedy School	Eligibility Period	Core Program			-	-	-	-
2018	201809150705	Norfolk County Agricultural	Norfolk County Agricultural	Closeout	Accelerated Repair	Roof, Windows / Doors, Boiler	DBB	Atlantic Construction and Management, Inc.	Raymond Design Associates, Inc.	Homer Contracting	Gale Associates, Inc.
2019	201902090015	North Adams	Greylock	Construction	Core Program	New Construction	DBB	Colliers Project Leaders NE, LLC	TSKP Studio, LLC	-	BVH Integrated Services, P.C.
2021	202102110015	North Andover	Kittredge	Approved Project Vote Pending	Core Program	New Construction		Colliers Project Leaders NE, LLC	Machado and Silveti Associates, LLC	-	-
2021	202102120505	North Attleborough	North Attleboro High	Design Development	Core Program	New Construction	CM@R	The Vertex Companies, LLC	Dore & Whittier Architects, Inc.	-	Rist-Frost-Shumway Engineering, P.C.
2016	201607350030	North Middlesex	Hawthorne Brook	Closeout	Accelerated Repair	Windows / Doors	DBB	Atlantic Construction and Management, Inc.	Habeeb & Associates Architects, Inc.	E. Amanti & Sons, Inc.	Gale Associates, Inc.
2011	201107350505	North Middlesex	North Middlesex Regional	Closeout	Core Program	New Construction	DBB	Turner & Townsend Heery	Symmes Maini & McKee Associates, Inc.	CTA Construction Co., Inc.	Horizon Engineering Associates, LLP
2016	201607350020	North Middlesex	Squannacook	Closeout	Accelerated Repair	Roof	DBB	Atlantic Construction and Management, Inc.	Habeeb & Associates Architects, Inc.	Vanguard Construction Company, Inc.	Gale Associates, Inc.
2016	201607350035	North Middlesex	Varnum Brook	Closeout	Accelerated Repair	Roof, Windows / Doors	DBB	Atlantic Construction and Management, Inc.	Habeeb & Associates Architects, Inc.	E. Amanti & Sons, Inc.	Gale Associates, Inc.
2025	202502170010	North Reading	J Turner Hood	Eligibility Period	Core Program			-	-	-	-
2010	201002170505	North Reading	North Reading High	Closeout	Core Program	Addition / Renovation	CM@R	PMA Consultants, LLC	Dore & Whittier Architects, Inc.	Gilbane Building Company	Cannon Design

Date of Report: 3/24/2026

Total Projects: 436

SOI	MSBA ID	District	School	Project Phase	Project Type	Project Scope	Procurement Type	OPM	Designer	CM/GC	Commissioning Consultant
2025	202502100410	Northampton	John F Kennedy Middle School	Eligibility Period	Accelerated Repair	Roof		-	-	-	-
2023	202302130014	Northborough	Marguerite E Peaslee	Feasibility Study	Core Program			PMA Consultants, LLC	Flansburgh Associates, Inc.	-	-
2024	202402130020	Northborough	Marion E Zeh	Approved Project Vote Pending	Accelerated Repair	Roof		Jones Lang LaSalle Boston	Raymond Design Associates, Inc.	-	-
2015	201502140001	Northbridge	Northbridge Elementary School	Final Audit Approved	Core Program	New Construction	CM@R	Symmes Maini & McKee Associates, Inc.	Dore & Whittier Architects, Inc.	Fontaine Brothers, Inc.	Fitzmeyer & Tocci Associates, Inc.
2019	201902140305	Northbridge	Northbridge Middle	Closeout	Accelerated Repair	Boiler	DBB	Architectural Consulting Group, LLC	Habeeb & Associates Architects, Inc.	NB Kenney Company, Inc	NV5 (RDK)
2017	201708530605	Northampton	Northeast Metropolitan Regional Voc Tech	Construction	Core Program	New Construction	CM@R	PMA Consultants, LLC	Drummeys Rosane Anderson, Inc.	Gilbane Building Company	Consulting Engineering Services, LLC Symmes, Maini & McKee Associates
2024	202408510605	Northern Berkshire Regional Voc Tech	Charles McCann Vocational Technical	Construction	Accelerated Repair	Roof, Windows / Doors		LIRO-Hill, Corp. (fka Hill International)	Gale Associates, Inc.	-	Jacobs Engineering Group Inc.
2024	202402180305	Norton	Norton Middle	Approved Project Vote Pending	Accelerated Repair	Roof		Next Level OPM, LLC	Tighe & Bond, Inc.	-	Jacobs Engineering Group Inc.
2024	202402190505	Norwell	Norwell High	OPM Selection	Core Program			-	-	-	-
2018	201802200305	Norwood	Dr. Philip O. Coakley Middle School	Building Complete	Core Program	New Construction	CM@R	Compass Project Management, Inc.	Ai3 Architects LLC	W. T. Rich Company Inc.	Horizon Engineering Associates, LLP
2021	202108550605	Old Colony Reg Voc Tech	Old Colony Regional Vocational Technical	Approved Project Vote Pending	Core Program	New Construction		PMA Consultants, LLC	HMFH Architects, Inc.	-	-
2016	201602230010	Orange	Fisher Hill School	Final Audit Approved	Core Program	Addition / Renovation	DBB	LIRO-Hill, Corp. (fka Hill International)	Raymond Design Associates, Inc.	J & J Contractors, Inc.	WSP USA
2023	202302290510	Peabody	Peabody Veterans Memorial High	Designer Selection	Core Program			PMA Consultants, LLC	-	-	-
2018	201802290027	Peabody	William A Welch Sr	Closeout	Core Program	Addition / Renovation	CM@R	Dore & Whittier Management Partners, Inc.	DiNisco Design, Inc.	Consigli Construction Company, Inc.	Consulting Engineering Services, LLC
2015	201507450505	Pentucket	Pentucket Regional Sr High	Closeout	Core Program	New Construction	CM@R	The Vertex Companies, LLC	Dore & Whittier Architects, Inc.	Rich-KBE Pentucket School Joint Venture	Jacobs Engineering Group Inc.
2024	202407500008	Pioneer Valley	Northfield Elementary	Eligibility Period	Core Program			-	-	-	-
2024	202402360065	Pittsfield	Crosby	OPM Selection	Core Program			-	-	-	-
2025	202502380010	Plainville	Anna Ware Jackson	Eligibility Period	Accelerated Repair	Roof		-	-	-	-
2025	202502380005	Plainville	Beatrice H Wood Elementary	Eligibility Period	Accelerated Repair	Roof		-	-	-	-
2020	202002390011	Plymouth	Federal Furnace School	Closeout	Accelerated Repair	Roof	DBB	Colliers Project Leaders NE, LLC	TSKP Studio, LLC	Greenwood Industries, Inc.	Gale Associates, Inc.
2024	202402390010	Plymouth	Hedge	OPM Selection	Core Program			-	-	-	-
2020	202002390012	Plymouth	Indian Brook	Closeout	Accelerated Repair	Roof	DBB	Colliers Project Leaders NE, LLC	TSKP Studio, LLC	Greenwood Industries, Inc.	Gale Associates, Inc.
2020	202002390047	Plymouth	West Elementary	Closeout	Accelerated Repair	Roof	DBB	Colliers Project Leaders NE, LLC	TSKP Studio, LLC	Greenwood Industries, Inc.	Gale Associates, Inc.
2025	202507530005	Quabbin	Hardwick Elementary	Eligibility Period	Accelerated Repair	Roof		-	-	-	-
2025	202507780010	Quaboag Regional	West Brookfield Elementary	Eligibility Period	Accelerated Repair	Windows / Doors		-	-	-	-
2025	202502430305	Quincy	Atlantic Middle	Eligibility Period	Accelerated Repair	Roof		-	-	-	-
2015	201502430020	Quincy	Beechwood Knoll Elementary	Final Audit Approved	Accelerated Repair	Roof, Windows / Doors	DBB	Atlantic Construction and Management, Inc.	Baker/Wohl Architects, Inc.	Alpha Contracting Associates, Inc.	Socotec AE Consulting, LLC fka. CBI Consulting LLC
2025	202502430310	Quincy	Broad Meadows Middle	Eligibility Period	Accelerated Repair	Roof		-	-	-	-
2022	202202430075	Quincy	Francis W Parker	Construction	Accelerated Repair	Boiler	DBB	Accenture, PLC (fka Anser Advisory)	TSKP Studio, LLC	Enterprise Equipment Co., Inc.	WSP USA
2025	202502430075	Quincy	Francis W Parker	Eligibility Period	Accelerated Repair	Roof		-	-	-	-
2022	202202430065	Quincy	Montclair	Closeout	Accelerated Repair	Roof	DBB	Accenture, PLC (fka Anser Advisory)	TSKP Studio, LLC	Greenwood Industries, Inc.	Gale Associates, Inc.

Date of Report: 3/24/2026

Total Projects: 436

SOI	MSBA ID	District	School	Project Phase	Project Type	Project Scope	Procurement Type	OPM	Designer	CM/GC	Commissioning Consultant
2017	201702430510	Quincy	North Quincy High	Final Audit Approved	Accelerated Repair	Roof	DBB	STV DPM (fka STV Inc.)	Socotec AE Consulting, LLC fka. CBI Consulting LLC	Greenwood Industries, Inc.	Gale Associates, Inc.
2025	202502430325	Quincy	Point Webster Middle	Eligibility Period	Accelerated Repair	Roof, Windows / Doors		-	-	-	-
2013	201302430320	Quincy	South West Middle School	Closeout	Core Program	New Construction	CM@R	PCA 360	Ai3 Architects LLC	Bond Brothers, Inc.	Symmes, Maini & McKee Associates
2020	202002430095	Quincy	Squantum	Construction	Core Program	Addition / Renovation	CM@R	PCA 360	Arrowstreet Inc.	-	Building Evolution Corporation
2022	202202430110	Quincy	Wollaston School	Closeout	Accelerated Repair	Roof	DBB	Accenture, PLC (fka Anser Advisory)	TSKP Studio, LLC	Capeway Roofing Systems, Inc.	Gale Associates, Inc.
2017	201702440015	Randolph	Margaret L. Donovan	Final Audit Approved	Accelerated Repair	Windows / Doors, Boiler	DBB	Atlantic Construction and Management, Inc.	TSKP Studio, LLC	A&A Window Products, Inc.	Consulting Engineering Services, LLC Gale Associates, Inc.
2017	201702440040	Randolph	Martin E Young Elementary	Final Audit Approved	Accelerated Repair	Windows / Doors	DBB	Atlantic Construction and Management, Inc.	TSKP Studio, LLC	Modern Glass & Aluminum, Inc.	Gale Associates, Inc.
2017	201702440020	Randolph	North Randolph Elementary School	Building Complete	Core Program	New Construction	DBB	CHA Consulting, Inc.	TSKP Studio, LLC	Agostini Construction Co., Inc.	Jacobs Engineering Group Inc.
2021	202102460017	Reading	J Warren Killam	Design Development	Core Program	New Construction	DBB	Colliers Project Leaders NE, LLC	LaVallee Brensinger Architects	-	Terva Engineering Corporation
2020	202002480025	Revere	Abraham Lincoln	Closeout	Accelerated Repair	Windows / Doors	DBB	PMA Consultants, LLC	CGKV Architects, Inc.	GVW, Inc.	R.J. Kenney Associates, Inc.
2020	202002480013	Revere	Beachmont Veterans Memorial School	Closeout	Accelerated Repair	Boiler	DBB	PMA Consultants, LLC	CGKV Architects, Inc.	NB Kenney Company, Inc	Bard, Rao + Athanas Consulting Engineers, LLC
2018	201802480505	Revere	Revere High	Design Development	Core Program	New Construction	CM@R	Leftfield, LLC	Perkins Eastman/DPC	Consigli Construction Company, Inc.	Bard, Rao + Athanas Consulting Engineers, LLC
2016	201602510060	Rockland	Phelps Elementary School	Closeout	Core Program	New Construction	DBB	PMA Consultants, LLC	Symmes Maini & McKee Associates, Inc.	Brait Builders Corp.	NV5 (RDK)
2024	202402580003	Salem	Bates	Design Development	Accelerated Repair	Roof		Skanska USA Building, Inc	Habeeb & Associates Architects, Inc.	-	Building Enclosure Science
2025	202502580015	Salem	Carlton	Eligibility Period	Accelerated Repair	Heat Pump, Roof		-	-	-	-
2025	202502580030	Salem	Horace Mann Laboratory	Eligibility Period	Accelerated Repair	Heat Pump, Roof		-	-	-	-
2022	202202580505	Salem	Salem High	Approved Project Vote Pending	Core Program	New Construction		Accenture, PLC (fka Anser Advisory)	Perkins+Will	-	-
2014	201402620505	Saugus	Saugus High	Closeout	Core Program	New Construction	CM@R	PMA Consultants, LLC	HMFH Architects, Inc.	Suffolk Construction Company	Consulting Engineering Services, LLC
2012	201202640305	Scituate	Gates Middle School	Closeout	Core Program	New Construction	DBB	CHA Consulting, Inc.	Dore & Whittier Architects, Inc.	Bacon-Agostini Construction Joint Venture	WSP USA
2020	202002640010	Scituate	Hatherly Elementary	Construction	Core Program	New Construction	DBB	The Vertex Companies, LLC	Dore & Whittier Architects, Inc.	Brait Builders Corp.	Consulting Engineering Services, LLC
2025	202502650405	Seekonk	Dr. Kevin M. Hurley Middle School	Eligibility Period	Core Program			-	-	-	-
2016	201602660505	Sharon	Sharon High	Closeout	Core Program	New Construction	CM@R	PMA Consultants, LLC	Tappe Architects, Inc.	Consigli Construction Company, Inc.	Fitzmeyer & Tocci Associates, Inc.
2024	202408710605	Shawsheen Valley Regional Voc Tech	Shawsheen Valley Vocational Technical High School	Eligibility Period	Core Program			-	-	-	-
2021	202102710030	Shrewsbury	Oak Middle School	Closeout	Accelerated Repair	Windows / Doors	DBB	The Vertex Companies, LLC	Mount Vernon Group Architects, Inc.	Campbell Construction Group, LLC	Simpson Gumpertz & Heger Inc.
2024	202402710505	Shrewsbury	Shrewsbury High School	OPM Selection	Core Program			-	-	-	-
2024	202402730008	Somerset	North Elementary	Design Development	Accelerated Repair	Windows / Doors		AECOM	BWA Architecture, Inc	-	-
2017	201702730305	Somerset	Somerset Middle School	Building Complete	Core Program	New Construction	CM@R	CGA Project Management	Ai3 Architects LLC	Brait Builders Corp.	Bard, Rao + Athanas Consulting Engineers, LLC
2024	202402730015	Somerset	South	Approved Project Vote Pending	Accelerated Repair	Windows / Doors		AECOM	BWA Architecture, Inc	-	-

Date of Report: 3/24/2026

Total Projects: 436

SOI	MSBA ID	District	School	Project Phase	Project Type	Project Scope	Procurement Type	OPM	Designer	CM/GC	Commissioning Consultant
2013	201302740505	Somerville	Somerville High	Closeout	Core Program	Addition / Renovation	CM@R	PMA Consultants, LLC	Symmes Maini & McKee Associates, Inc.	Suffolk Construction Company	WSP USA
2023	202302740120	Somerville	Winter Hill Community	Feasibility Study	Core Program			PMA Consultants, LLC	Perkins Eastman/DPC	-	-
2023	202302780020	South Hadley	Mosier	Feasibility Study	Core Program			Skanska USA Building, Inc	Mount Vernon Group Architects, Inc.	-	-
2024	202408290605	South Middlesex Regional Vocational Technical	Joseph P Keefe Technical High School	Eligibility Period	Core Program			-	-	-	-
2021	202108730605	South Shore Regional Voc Tech	South Shore Vocational Technical High	Design Development	Core Program	New Construction	CM@R	Leftfield, LLC	Drummeey Rosane Anderson, Inc.	Suffolk Construction Company	Horizon Engineering Associates, LLP
2024	202402760305	Southborough	P Brent Trottier	Approved Project Vote Pending	Accelerated Repair	Roof		Colliers Project Leaders NE, LLC	Turowski2 Architecture, Inc.	-	-
2018	201807670505	Spencer-E Brookfield	David Prouty High	Construction	Core Program	Addition / Renovation	CM@R	Colliers Project Leaders NE, LLC	Jones Whitsett Architects, Inc.	Fontaine Brothers, Inc.	Horizon Engineering Associates, LLP
2025	202502810095	Springfield	Alfred G. Zanetti Montessori Magnet School	OPM Selection	Accelerated Repair	Heat Pump		-	-	-	-
2025	202502810165	Springfield	Arthur T Talmadge	OPM Selection	Accelerated Repair	Heat Pump		-	-	-	-
2025	202502810035	Springfield	Daniel B Brunton	Eligibility Period	Accelerated Repair	Roof		-	-	-	-
2025	202502810010	Springfield	Edward P. Boland School	Eligibility Period	Accelerated Repair	Roof		-	-	-	-
2023	202302810195	Springfield	German Gerena Community School	Feasibility Study	Core Program			Skanska USA Building, Inc	DiNisco Design, Inc.	-	-
2021	202102810068	Springfield	Glickman Elementary	Closeout	Accelerated Repair	Windows / Doors	DBB	Colliers Project Leaders NE, LLC	Johnson Roberts Associates, Inc.	W.J. Mountford Company	Simpson Gumpertz & Heger Inc.
2024	202402810510	Springfield	High School Of Commerce	Design Development	Accelerated Repair	Roof		Skanska USA Building, Inc	Dietz & Company Architects, Inc.	-	-
2024	202402810100	Springfield	Indian Orchard Elementary	Design Development	Accelerated Repair	Roof		Skanska USA Building, Inc	Dietz & Company Architects, Inc.	-	-
2025	202502810115	Springfield	Liberty	OPM Selection	Accelerated Repair	Heat Pump		-	-	-	-
2025	202502810140	Springfield	Mary M Lynch	OPM Selection	Accelerated Repair	Heat Pump		-	-	-	-
2024	202402810145	Springfield	Mary O Pottenger	Construction	Accelerated Repair	Windows / Doors		The Vertex Companies, LLC	Johnson Roberts Associates, Inc.	-	Building Enclosure Associates, LLC (VPC)
2022	202202810023	Springfield	Milton Bradley School	Closeout	Accelerated Repair	Boiler	DBB	Arcadis U.S., Inc.	NV5 (fka Joslin, Lesser + Associates Inc.)	N & T Mechanical Contractors, Inc.	Van Zelm Heywood & Shadford, Inc.
2024	202402810023	Springfield	Milton Bradley School	Construction	Accelerated Repair	Windows / Doors		The Vertex Companies, LLC	Johnson Roberts Associates, Inc.	-	Building Enclosure Associates, LLC (VPC)
2022	202202810055	Springfield	Rebecca M Johnson	Closeout	Accelerated Repair	Boiler	DBB	Arcadis U.S., Inc.	NV5 (fka Joslin, Lesser + Associates Inc.)	Adams Plumbing and Heating, Inc.	Van Zelm Heywood & Shadford, Inc.
2024	202402810055	Springfield	Rebecca M Johnson	Construction	Accelerated Repair	Windows / Doors		The Vertex Companies, LLC	Johnson Roberts Associates, Inc.	-	Building Enclosure Associates, LLC (VPC)
2024	202402810020	Springfield	Samuel Bowles	Design Development	Accelerated Repair	Roof		LiRo-Hill, Corp. (fka Hill International)	Raymond Design Associates, Inc.	-	Building Enclosure Science
2025	202502810355	Springfield	South End Middle School	OPM Selection	Accelerated Repair	Heat Pump		-	-	-	-
2021	202102810500	Springfield	Springfield Central High	Closeout	Accelerated Repair	Boiler	DBB	Colliers Project Leaders NE, LLC	Johnson Roberts Associates, Inc.	B-G Mechanical, Inc.	Van Zelm Heywood & Shadford, Inc.
2024	202402810500	Springfield	Springfield Central High	Design Development	Accelerated Repair	Windows / Doors		LiRo-Hill, Corp. (fka Hill International)	Raymond Design Associates, Inc.	-	Building Enclosure Science LLC
2024	202402810160	Springfield	Sumner Avenue	Design Development	Accelerated Repair	Roof		LiRo-Hill, Corp. (fka Hill International)	Raymond Design Associates, Inc.	-	Building Enclosure Science
2021	202102810015	Springfield	Thomas M Balliet	Closeout	Accelerated Repair	Windows / Doors	DBB	Colliers Project Leaders NE, LLC	Johnson Roberts Associates, Inc.	D.A. Sullivan & Sons, Inc.	Simpson Gumpertz & Heger Inc.
2025	202502810480	Springfield	Van Sickle Prep	Eligibility Period	Accelerated Repair	Roof		-	-	-	-
2025	202502810185	Springfield	Washington	Eligibility Period	Core Program			-	-	-	-
2024	202402810190	Springfield	White Street	Eligibility Period	Core Program			-	-	-	-
2016	201602810045	Springfield	William N. DeBerry	Closeout	Core Program	New Construction	CM@R	Skanska USA Building, Inc	DiNisco Design, Inc.	Fontaine Brothers, Inc.	Horizon Engineering Associates, LLP

Date of Report: 3/24/2026

Total Projects: 436

SOI	MSBA ID	District	School	Project Phase	Project Type	Project Scope	Procurement Type	OPM	Designer	CM/GC	Commissioning Consultant
2018	201802840505	Stoneham	Stoneham High	Construction	Core Program	New Construction	CM@R	Symmes Maini & McKee Associates, Inc.	Perkins+Will	Consigli Construction Company, Inc.	NV5 (RDK)
2020	202002850015	Stoughton	South Elementary	Design Development	Core Program	New Construction	DBB	Compass Project Management, Inc.	Drumme Rosane Anderson, Inc.	-	Ico Energy and Engineering, inc.
2013	201302850505	Stoughton	Stoughton High	Final Audit Approved	Core Program	New Construction	CM@R	Compass Project Management, Inc.	Drumme Rosane Anderson, Inc.	Consigli Construction Company, Inc.	Fitzmeyer & Tocci Associates, Inc.
2024	202402880025	Sudbury	General John Nixon Elementary	Design Development	Accelerated Repair	Roof	-	NV5 (fka Joslin, Lesser + Associates Inc.)	CIVITECTS PC	-	Fitzmeyer & Tocci Associates, Inc.
2024	202402880010	Sudbury	Josiah Haynes	Design Development	Accelerated Repair	Roof	-	NV5 (fka Joslin, Lesser + Associates Inc.)	CIVITECTS PC	-	Fitzmeyer & Tocci Associates, Inc.
2025	202502900003	Sutton	Sutton Early Learning	Eligibility Period	Accelerated Repair	Heat Pump, Roof	-	-	-	-	-
2017	201702910010	Swampscott	Hadley	Building Complete	Core Program	New Construction	DBB	LiRo-Hill, Corp. (fka Hill International)	LaVallee Brensinger Architects	CTA Construction Co., Inc.	WSP USA
2022	202202920305	Swansea	Joseph Case Jr High	Schematic Design	Core Program	New Construction	-	PMA Consultants, LLC	Finegold Alexander Architects	-	-
2020	202002930057	Taunton	H H Galligan	Final Audit Approved	Accelerated Repair	Windows / Doors, Boiler	DBB	LiRo-Hill, Corp. (fka Hill International)	Tighe & Bond, Inc.	Lambrian Construction Corp.	WSP USA
2025	202502930305	Taunton	John F Parker Middle	OPM Selection	Accelerated Repair	Windows / Doors	-	-	-	-	-
2018	201802930525	Taunton	Taunton Alternative High School	Closeout	Accelerated Repair	Roof, Windows / Doors	DBB	NETCO Construction Project Managers, Inc.	Simpson Gumpertz & Heger Inc.	J.J. Cardosi, Inc.	Building Enclosure Associates, LLC (VPC)
2015	201502950025	Tewksbury	Louise Davy Trahan	Closeout	Core Program	New Construction	CM@R	Turner & Townsend Heery	Flansburgh Associates, Inc.	Consigli Construction Company, Inc.	Consulting Engineering Services, LLC
2019	201908780605	Tri County	Tri-County Regional Vocational Technical	Construction	Core Program	New Construction	CM@R	Dore & Whittier Management Partners, Inc.	Drumme Rosane Anderson, Inc.	Consigli Construction Company, Inc.	Consulting Engineering Services, LLC
2024	202407730505	Triton	Triton Regional High School	Designer Selection	Core Program	-	-	PMA Consultants, LLC	-	-	-
2018	201803010305	Tyngsborough	Tyngsborough Middle	Building Complete	Core Program	New Construction	CM@R	Leftfield, LLC	JCJ Architecture, PC	Fontaine Brothers, Inc.	NV5 (RDK)
2024	202408790605	Upper Cape Cod Regional Voc Tech	Upper Cape Cod Vocational Technical	OPM Selection	Core Program	-	-	-	-	-	-
2019	201903050505	Wakefield	Wakefield Memorial High	Construction	Core Program	New Construction	CM@R	Leftfield, LLC	Symmes Maini & McKee Associates, Inc.	Bond Building Construction, Inc.	Bard, Rao + Athanas Consulting Engineers, LLC
2018	201803070305	Walpole	Bird Middle	Building Complete	Core Program	New Construction	CM@R	Compass Project Management, Inc.	Tappe Architects, Inc.	Fontaine Brothers, Inc.	Horizon Engineering Associates, LLP
2025	202503080040	Waltham	Northeast Elementary School	Eligibility Period	Accelerated Repair	Roof	-	-	-	-	-
2014	201403080505	Waltham	Waltham Sr High	Building Complete	Core Program	New Construction	CM@R	Leftfield, LLC	Symmes Maini & McKee Associates, Inc.	Consigli Construction Company, Inc.	Fitzmeyer & Tocci Associates, Inc.
2021	202103100305	Wareham	Wareham Middle	Closeout	Accelerated Repair	Roof	DBB	Leftfield, LLC	CGKV Architects, Inc.	Capeway Roofing Systems, Inc.	Socotec AE Consulting, LLC fka. CBI Consulting LLC
2021	202103100505	Wareham	Wareham Senior High	Closeout	Accelerated Repair	Boiler	DBB	Leftfield, LLC	CGKV Architects, Inc.	D.D.S. Industries, Inc.	Bard, Rao + Athanas Consulting Engineers, LLC
2017	201703140505	Watertown	Watertown High	Construction	Core Program	New Construction	DBB	The Vertex Companies, LLC	Ai3 Architects LLC	Brait Builders Corp.	Fitzmeyer & Tocci Associates, Inc.
2019	201903150020	Wayland	Loker School	Closeout	Accelerated Repair	Roof	DBB	Architectural Consulting Group, LLC	Tighe & Bond, Inc.	Tower Construction Corporation	Gale Associates, Inc.
2018	201803160505	Webster	Bartlett High School	Construction	Core Program	Addition / Renovation	DBB	Colliers Project Leaders NE, LLC	Flansburgh Associates, Inc.	Brait Builders Corp.	Van Zelm Heywood & Shadford, Inc.
2017	201703170050	Wellesley	Ernest F Upham	Closeout	Core Program	New Construction	CM@R	Compass Project Management, Inc.	Symmes Maini & McKee Associates, Inc.	Shawmut Design and Construction	Fitzmeyer & Tocci Associates, Inc.
2022	202203230003	West Bridgewater	Rose L Macdonald	Approved Project Vote Pending	Core Program	New Construction	-	PMA Consultants, LLC	HMFH Architects, Inc.	-	-
2024	202403320005	West Springfield	John Ashley	OPM Selection	Core Program	-	-	-	-	-	-
2016	201603210010	Westborough	Annie E Fales	Closeout	Core Program	New Construction	CM@R	The Vertex Companies, LLC	HMFH Architects, Inc.	Gilbane Building Company	Fitzmeyer & Tocci Associates, Inc.
2018	201803250015	Westfield	Franklin Ave	Building Complete	Core Program	New Construction	DBB	P3 Inc.	Caolo & Bieniek Associates, Inc.	Fontaine Brothers, Inc.	Van Zelm Heywood & Shadford, Inc.

Date of Report: 3/24/2026

Total Projects: 436

SOI	MSBA ID	District	School	Project Phase	Project Type	Project Scope	Procurement Type	OPM	Designer	CM/GC	Commissioning Consultant
2021	202103260310	Westford	Blanchard Middle	Closeout	Accelerated Repair	Roof	DBB	P3 Inc.	CIVITECTS PC	J.D. Rivet & Co., Inc.	3IVE LLC
2023	202303260025	Westford	Col John Robinson	Feasibility Study	Core Program			The Vertex Companies, LLC	LaVallee Brensinger Architects	-	-
2020	202003300505	Weston	Weston High	Closeout	Accelerated Repair	Roof	DBB	P3 Inc.	BWA Architecture, Inc	Young Developers LLC	Socotec AE Consulting, LLC fka. CBI Consulting LLC
2025	202503300505	Weston	Weston High	Eligibility Period	Core Program			-	-	-	-
2019	201903310030	Westport	Westport Elementary	Closeout	Accelerated Repair	Roof	DBB	The Vertex Companies, LLC	The S/L/A/M Collaborative	Capeway Roofing Systems, Inc.	Simpson Gumpertz & Heger Inc.
2014	201403310305	Westport	Westport Middle-High School	Building Complete	Core Program	New Construction	CM@R	CHA Consulting, Inc.	Jonathan Levi Architects LLC	Agostini Construction Co., Inc.	BVH Integrated Services, P.C.
2017	201703350015	Westwood	Paul Hanlon	Closeout	Core Program	New Construction	DBB	Compass Project Management, Inc.	Dore & Whittier Architects, Inc.	Brait Builders Corp.	Jacobs Engineering Group Inc.
2015	201503360020	Weymouth	Maria Weston Chapman Middle School	Closeout	Core Program	Addition / Renovation	CM@R	LiRo-Hill, Corp. (fka Hill International)	HMFH Architects, Inc.	Bond Brothers, Inc.	WSP USA
2019	201907800310	Whitman-Hanson	Whitman Middle	Construction	Core Program	New Construction	DBB	Colliers Project Leaders NE, LLC	Ai3 Architects LLC	Fontaine Brothers, Inc.	Jacobs Engineering Group Inc.
2024	202408850605	Whittier Voc	Whittier Regional Vocational	Eligibility Period	Core Program			-	-	-	-
2020	202003420015	Wilmington	Wildwood	Design Development	Core Program	New Construction	CM@R	Leftfield, LLC	Dore & Whittier Architects, Inc.	-	Ico Energy and Engineering, inc.
2024	202403430040	Winchendon	Memorial	Approved Project Vote Pending	Accelerated Repair	Roof, Windows / Doors		PCA 360	CGKV Architects, Inc.	-	-
2024	202403430505	Winchendon	Murdock Middle/High	Approved Project Vote Pending	Accelerated Repair	Roof		PCA 360	CGKV Architects, Inc.	-	-
2024	202403430050	Winchendon	Toy Town Elementary	Approved Project Vote Pending	Accelerated Repair	Roof		PCA 360	CGKV Architects, Inc.	-	-
2019	201903440020	Winchester	Lynch Elementary	Building Complete	Core Program	New Construction	DBB	LiRo-Hill, Corp. (fka Hill International)	Tappe Architects, Inc.	Brait Builders Corp.	Jacobs Engineering Group Inc.
2025	202503440040	Winchester	Muraco Elementary	Eligibility Period	Core Program			-	-	-	-
2025	202503480020	Worcester	Belmont Street Community	OPM Selection	Accelerated Repair	Roof		-	-	-	-
2023	202303480503	Worcester	Burncoat Senior High	Designer Selection	Core Program			Dore & Whittier Management Partners, Inc.	-	-	-
2016	201603480512	Worcester	Doherty Memorial High	Closeout	Core Program	New Construction	CM@R	Tishman Construction Corporation of MA	Lamoureux Pagano Associates Architects, Inc.	Fontaine Brothers, Inc.	BVH Integrated Services, P.C.
2025	202503480215	Worcester	Rice Square	OPM Selection	Accelerated Repair	Roof, Windows / Doors		-	-	-	-
2014	201403480520	Worcester	South High Community	Closeout	Core Program	New Construction	CM@R	Turner & Townsend Heery	Lamoureux Pagano Associates Architects, Inc.	Fontaine Brothers, Inc.	Horizon Engineering Associates, LLP
2020	202003480225	Worcester	Worcester Arts Magnet School	Closeout	Accelerated Repair	Roof	DBB	Architectural Consulting Group, LLC	Russo Barr Associates, Inc.	J.D. Rivet & Co., Inc.	3IVE LLC
2022	202203500010	Wrentham	Charles E Roderick	Schematic Design	Core Program	New Construction		The Vertex Companies, LLC	TSKP Studio, LLC	-	-

APPENDIX B
2026-28 ESTIMATED BID DATES

2026 ESTIMATED BID DATES

Note bid dates are Estimates ONLY. Please contact Districts for exact information.

April 3, 2026

District	School Type	Enrollment	Project Type	Project Budget	Start	Finish	Construction Budget	Notes	Qtr 3, 2025	Qtr 4, 2025	Qtr 1, 2026	Qtr 2, 2026	Qtr 3, 2026	Qtr 4, 2026	Qtr 1, 2027
Berkley	ES	385	New	\$ 89.9	Mon 11/24/25	Wed 1/21/26	\$ 74.2	NTP targeted: January 2026			Berkley Community School 11/24 — 1/21 1/14				
Burlington	ES	325	New	\$ 100.5	Tue 12/2/25	Tue 2/10/26	\$ 68.7	NTP targeted: February 2026			Burlington - Fox Hill Elementary School 12/2 — 2/10 1/14				
Revere	HS	2450	New	\$ 497.5	Tue 12/23/25	Mon 4/27/26	\$ 412.5	GMP targeted: April 2026			Revere High School 12/23 — 4/27 2/17				
Stoughton	ES	515	New	\$ 114.4	Mon 3/9/26	Tue 9/1/26	\$ 92.3	GMP targeted: September 2026			Stoughton - South Elementary School 3/9 — 9/1 7/15				
Reading	ES	455	New	\$ 130.0	Tue 4/7/26	Tue 5/19/26	\$ 101.5	NTP targeted: May 2026			Reading - J. Warren Killam Elementary School 4/7 — 5/19 5/6				
Canton	MS	1,020	New	\$ 241.8	Mon 6/8/26	Mon 8/10/26	\$ 195.7	GMP targeted: August 2026			Canton - William H. Galvin Middle School 6/8 — 8/10 7/10				
South Shore	HS	900	New	\$ 276.4	Mon 6/8/26	Wed 9/30/26	\$ 223.9	GMP targeted: September 2026			South Shore Vocational Technical High School 6/8 — 9/30 7/8				
Leominster	ES	610	New	\$ 114.8	Wed 6/10/26	Fri 10/16/26	\$ 89.8	NTP targeted: October 2026			Leominster - Fall Brook Elementary School 6/10 — 10/16 8/11				
East Bridgewater	ES	510	New	\$ 125.2	Wed 7/1/26	Thu 1/7/27	\$ 101.1	GMP targeted: January 2027			East Bridgewater - Central Elementary School 7/1 — 1/7 12/16				
Longmeadow	MS	665	New	\$ 151.6	Mon 7/13/26	Mon 11/30/26	\$ 119.1	GMP targeted: November 2026			Longmeadow - Glenbrook Middle School 7/13 — 11/30 10/5				
North Attleborough	HS	1025	New	\$ 287.9	Mon 8/24/26	Mon 10/26/26	\$ 234.1	GMP targeted: October 2026			North Attleborough High School 8/24 — 10/26 9/25				
Wilmington	ES	755	New	\$ 173.3	Thu 10/8/26	Sat 2/27/27	\$ 138.1	GMP targeted: February 2027			Wilmington - Wildwood Elementary School 10/8 — 2/27 11/30				
Total		9615		\$ 2,303.3			\$ 1,851.0								

Construction Manager at Risk Project — Design Bid Build Project — CMR Project Pending Local Approval — DBB Project Pending Local Approval — Filed Sub Bids — GC Bids/GMP Execution

Projects represented by a single black diamond have not completed a Schematic Design Submission.

Project Budget denotes total District costs, not the basis of the MSBA Total Facilities Grant. Projects without budget information have not received Project Scope and Budget approval. Note: Budget values are in millions.

2027 ESTIMATED BID DATES

Note bid dates are Estimates ONLY. Please contact Districts for exact information.

April 3, 2026

District	School Type	Enrollment	Project Type	Project Budget	Start	Finish	Construction Budget	Notes	Half 1, 2026	Half 2, 2026	Half 1, 2027	Half 2, 2027	Half 1, 2028
Lexington	HS	2395	Add/Reno	\$ 659.7	Thu 4/9/26	Fri 8/20/27	\$ 534.9	GMP targeted: August 2027	4/9	Lexington High School			8/20
Old Colony	HS	776	New	\$ 288.7	Mon 8/10/26	Mon 3/22/27	\$ 226.2	NTP targeted: March 2027	Old Colony Regional Vocational Technical High School			8/10	3/22
Berkshire Hills	HS	485	New	\$ 152.1	Tue 9/8/26	Fri 4/23/27	\$ 125.1	NTP targeted: April 2027	Berkshire Hills - Monument Mountain Regional High School			9/8	4/23
Millis	MHS	645	Add/Reno	\$ 125.0	Thu 9/17/26	Thu 3/25/27	\$ 98.6	GMP targeted: March 2027	Millis Middle High School			9/17	3/25
West Bridgewater	ES	1075	New	\$ 169.6	Mon 12/21/26	Tue 7/6/27	\$ 131.9	GMP targeted: July 2027	West Bridgewater - Rose L. MacDonald Elementary School			12/21	7/6
Littleton	ES	435	New	\$ 99.7	Tue 2/9/27	Mon 5/3/27	\$ 82.0	GMP targeted: May 2027	Littleton - Shaker Lane Elementary School			2/9	5/3
Martha's Vineyard	HS	805	Add/Reno	\$ 333.5	Mon 4/19/27	Thu 10/21/27	\$ 266.9	GMP targeted: October 2027	Martha's Vineyard Regional High School			4/19	10/21
North Andover	ES	335	New	\$ 79.8	Wed 7/7/27	Fri 9/10/27	\$ 63.2	NTP targeted: September 2027	North Andover - Kittredge Elementary School			7/7	9/10
Dracut	ES	860	New	\$ 177.3	Fri 8/6/27	Fri 9/24/27	\$ 139.6	NTP targeted: September 2027	Dracut - Campbell Elementary School			8/6	9/24
Wrentham	ES	595	New		Tue 8/17/27	Tue 9/28/27		GMP targeted: September 2027	Wrentham - Charles E. Roderick School			8/17	9/28
Marlborough	ES	950	New		Fri 10/1/27	Fri 10/1/27		NTP targeted: October 2027	Marlborough - Richer Elementary School				10/1
Franklin County	HS	600	New		Fri 10/15/27	Fri 11/19/27		NTP targeted: November 2027	Franklin County Regional Vocational Technical High School			10/15	11/19
Chicopee	ES	340	New		Thu 11/18/27	Thu 11/18/27		NTP targeted: November 2027	Chicopee - Barry Elementary School				11/18
Total		10296		\$ 2,085.4			\$ 1,668.4						

Construction Manager at Risk Project CMR Project Pending Local Approval Filed Sub Bids Design Bid Build Project DBB Project Pending Local Approval GC Bids/GMP Execution

The project start date represents the Filed-Sub bid solicitation date, the gray diamond Filed-Sub bid date, and the black diamond GC Bids / GMP Execution.

Projects represented by a single black diamond have not completed a Schematic Design Submission.

Project Budget denotes total District costs, not the basis of the MSBA Total Facilities Grant. Projects without budget information have not received Project Scope and Budget approval. Note: Budget values are in millions.

2028 ESTIMATED BID DATES

Note bid dates are Estimates ONLY. Please contact Districts for exact information.

April 3, 2026

District	School Type	Enrollment	Project Type	Project Budget	Start	Finish	Construction Budget	Notes	January 2028	February 2028	March 2028	April 2028	May 2028	June 2028
Salem	HS	1000	New	\$ 447.4	Thu 2/3/28	Thu 3/30/28	\$ 372.5	GMP targeted: March 2028		2/3	Salem High School ◆ 3/1	◆ 3/30		
Swansea	HS	510	New		Fri 2/11/28	Fri 2/11/28		NTP targeted: February 2028		Swansea - J Case J High School ◆ 2/11				
Blackstone-Millville	HS	580	New		Wed 3/1/28	Wed 3/1/28		NTP targeted: March 2028			Blackstone-Millville Regional High School ◆ 3/1			
Needham	MS	1335	Add/Reno		Tue 4/25/28	Tue 4/25/28		GMP targeted: April 2028				Needham - Pollard Middle School ◆ 4/25		
Total		3425		\$ 447.4			\$ 372.5							

Construction Manager at Risk Project CMR Project Pending Local Approval Filed Sub Bids ◆

Design Bid Build Project DBB Project Pending Local Approval GC Bids/GMP Execution ◆

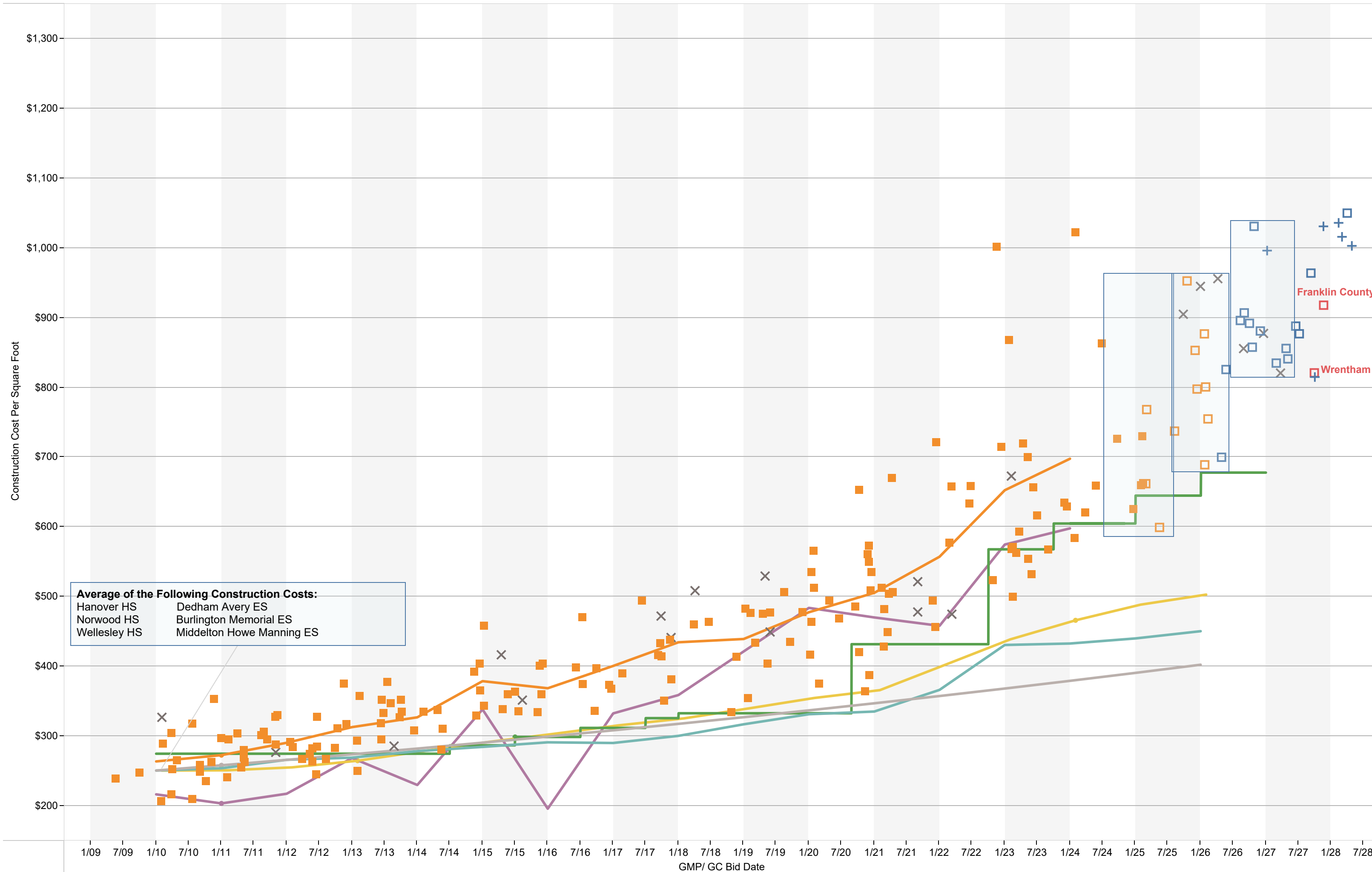
The project start date represents the Filed-Sub bid solicitation date, the gray diamond Filed-Sub bid date, and the black diamond GC Bids / GMP Execution.

Projects represented by a single black diamond have not completed a Schematic Design Submission.

Project Budget denotes total District costs, not the basis of the MSBA Total Facilities Grant. Projects without budget information have not received Project Scope and Budget approval. Note: Budget values are in millions.

APPENDIX C
SCHOOL CONSTRUCTION COSTS COMPARED
TO COMMON ECONOMIC INDICATORS

New Construction Costs Compared to Common Economic Indicators | April 3, 2026



Legend

- New Construction PSR +
- New Construction SD □
- New Construction SD Board Vote □
- New Construction Vote Failed ×
- New Construction Bid □
- New Construction PFA Amended ■
- Average- New Construction Projects —
- Average \$/SF for Add/Reno —
- MSBA Construction Building & Site Funding Limit —
- RLB Comparative Cost- Boston —
- BLS PPI New School Construction - National —
- 3% Escalation —

The information and data contained in this chart is based on the MSBA's review of construction cost estimates, contracts and other documentation provided by cities, towns, and regional school districts.

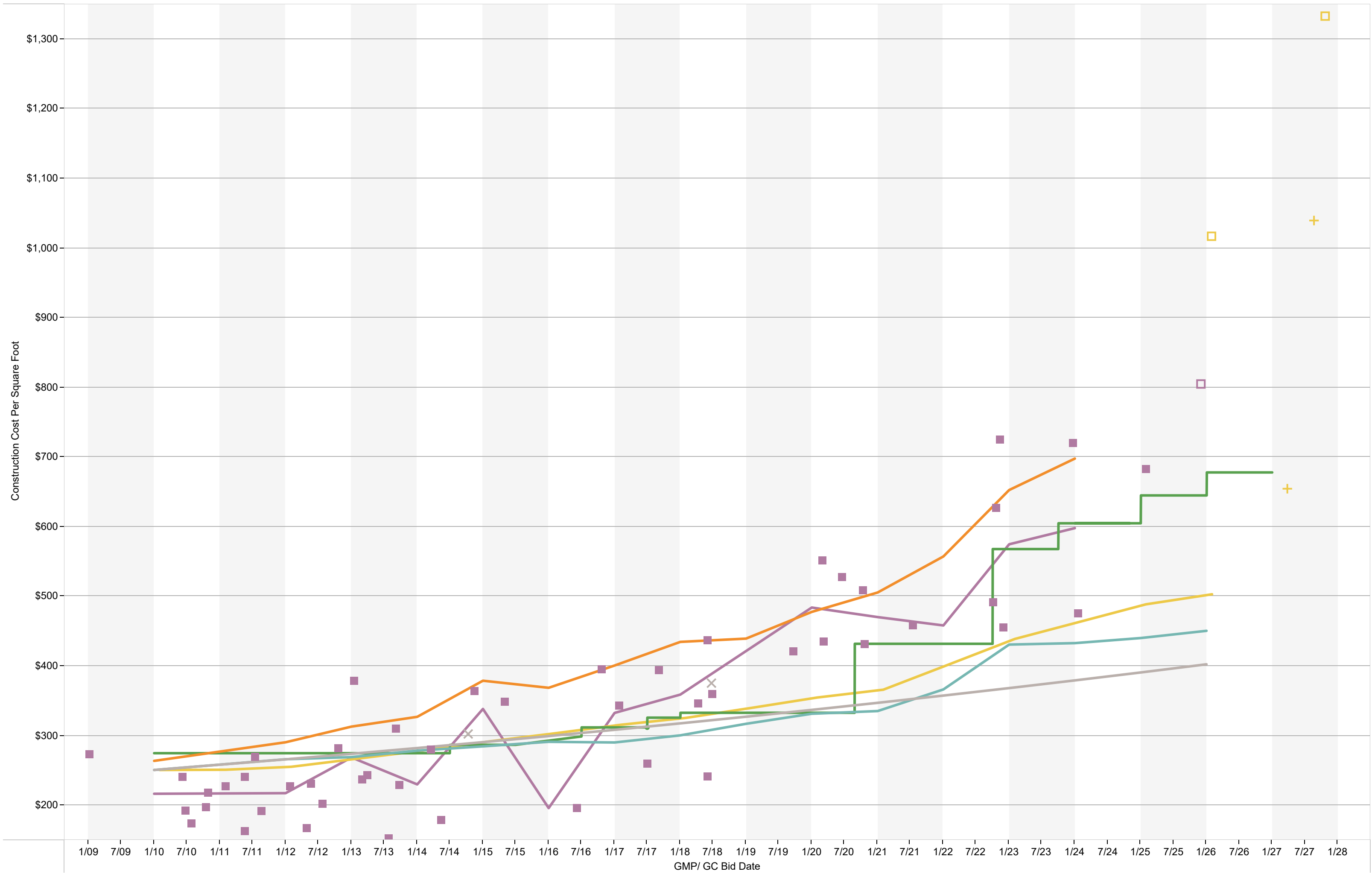
This information and data is intended for informational purposes only. The data may have changed based on actual construction bids or contract amendments, for example, and the MSBA shall have no responsibility or duty to update any of the information.

Please contact the Districts for the most current information. The MSBA hereby disclaims any and all liability and responsibility that may arise in connection with the information contained in this chart. (Updated April 2026)

Franklin County

Wrentham

Addition/Renovation Costs Compared to Common Economic Indicators | April 3, 2026



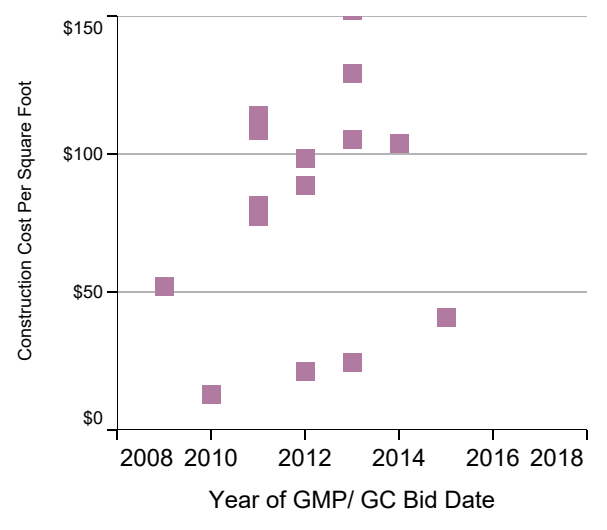
- Legend**
- Addition / Renovation PSR +
 - Addition / Renovation SD □
 - Addition / Renovation Bid □
 - Addition / Renovation PFA Amended ■
 - Addition / Renovation Vote Failed ×
 - Average- New Construction Projects —
 - Average \$/SF for Add/Reno —
 - MSBA Construction Building & Site Funding Limit —
 - RLB Comparative Cost- Boston —
 - BLS PPI- New School Construction - National —
 - 3% Escalation —

The information and data contained in this chart is based on the MSBA's review of construction cost estimates, contracts and other documentation provided by cities, towns, and regional school districts.

This information and data is intended for informational purposes only. The data may have changed based on actual construction bids or contract amendments, for example, and the MSBA shall have no responsibility or duty to update any of the information.

Please contact the Districts for the most current information. The MSBA hereby disclaims any and all liability and responsibility that may arise in connection with the information contained in this chart. (Updated April 2026)

Projects Below \$150/ SF



APPENDIX D
CONSTRUCTION STATUS REPORT

**Projects in Construction
MSBA Grant Basis and Maximum Grant Amount
Data Reported as of March 19, 2026**

Core Program and Waitlist Totals			\$6,343,700,952																*Includes Alternates	\$3,244,201,877
Project	Grade	Contractor	Total Construction Cost*	Projected Enrollment	PFA or Bid Data	SD Gross Sq.Ft.	Construction Cost/Sq.Ft.	Building Cost	Building Cost/Sq.Ft.	Procurement Type	Construction Start Date	Substantial Completion Date *	Building Construction Complete **	Schedule Variance (days) ***	Physical Progress	Change Orders	Change Orders %	Construction Status	Est Max Total Facilities Grant	
CAPITAL PIPELINE PROJECTS IN CONSTRUCTION																				
Core Program Totals			\$6,343,700,952																\$3,244,201,877	
Amherst Fort River Elementary	Elementary School	CTA Construction Co., Inc.	\$81,337,167	575	Bid	105,750	\$769	\$50,004,336	\$473	Design/Bid/Build	13-Jan-25	31-Jul-26			70%	\$1,514,804	1.862%	Building exterior activities include window and curtainwall installation. Building interior activities include drywall and insulation installation, painting, wall and floor tile installation, and mechanical, electrical and plumbing rough-in work.	\$48,434,659	
Berkley Berkley Community	Elementary School	Brait Builders Corp.	\$70,390,503	385	PFA	84,620	\$832	\$42,427,647	\$501	Design/Bid/Build	30-Jan-26	02-Jun-27			1%	\$0	0.000%	Site work activities include excavation and backfill in preparation for the installation of building footings and foundations.	\$38,869,560	
Braintree South Middle	Middle School	Bacon Construction Co, Inc.	\$69,181,416	800	Bid	145,846	\$474	\$47,780,677	\$328	Design/Bid/Build	10-Jan-22	01-Sep-23	01-Sep-23		99%	\$1,744,160	2.521%	Building interior and exterior activities include punch list work, electrical and drainage work.	\$30,967,468	
Bristol-Plymouth Regional Voc Tech Bristol-Plymouth Voc Tech	Vocational/Technical	Consigli Construction Company, Inc.	\$238,460,831	1,434	Bid	419,765	\$568	\$170,872,397	\$407	Design/Bid/Build	27-Nov-23	26-May-26			78%	\$6,832,351	2.865%	Building exterior activities include penthouse door installations, and ongoing work on roof edge. Building interior activities include continued installation of finishes, painting, and millwork throughout the building, terrazzo flooring and floor tile, auditorium stage floor installation, gymnasium bleachers, and ongoing elevator installation.	\$142,441,041	
Burlington Fox Hill	Elementary School	CTA Construction Co., LLC	\$80,269,500	325	PFA	91,000	\$882	\$46,184,800	\$508	Design/Bid/Build	24-Mar-26	10-Nov-28			0%	\$0	0.000%	Exterior activities include site work and mobilization of equipment and project trailers and connecting temporary utilities.	\$30,919,834	
Dennis-Yarmouth Dennis-Yarmouth Middle	Middle School	Commodore Builders Corporation	\$83,843,640	940	Bid	186,500	\$451	\$69,813,633	\$376	Design/Bid/Build	02-Apr-21	14-Oct-22	16-Feb-23	125 behind	99%	\$8,046,107	9.597%	Site work activities are limited to ongoing work to replace the turf fields due to drainage issues.	\$44,383,043	
Fitchburg Crocker Elementary	Elementary School	Fontaine Brothers, Inc.	\$57,872,519	845	Bid	115,788	\$500	\$47,116,510	\$407	Design/Bid/Build	23-Mar-23	05-Jun-25	27-Jun-25	22 behind	95%	\$4,994,629	8.691%	Building interior activities include work on punch list items.	\$46,986,350	
Haverhill Consentino	Middle School	Brait Builders Corp.	\$125,097,100	1,080	Bid	183,128	\$683	\$80,291,800	\$438	Design/Bid/Build	08-Apr-24	18-Mar-26			88%	\$1,572,891	1.257%	Site work activities include paving and concrete placements. Building interior activities include the installation of tile, terrazzo, door and hardware installation, flooring, lighting, painting, and heat piping.	\$99,762,686	
Hingham Wm L Foster Elementary	Elementary School	Bacon Construction Co, Inc.	\$89,428,625	605	Bid	126,385	\$708	\$66,203,295	\$524	Design/Bid/Build	30-Dec-22	23-Aug-24	31-Dec-24	130 behind	98%	\$2,717,444	3.039%	Building exterior and interior activities include work on final punch list items.	\$28,053,151	
Holyoke William R. Peck	K-8	Fontaine Brothers, Inc.	\$70,580,780	550	Bid	107,475	\$657	\$46,911,739	\$436	Design/Bid/Build	16-Feb-24	15-Aug-25			99%	\$1,811,412	2.566%	Building interior activities include addressing punch list items and change order work.	\$54,195,424	
Hopkinton Elmwood	Elementary School	Brait Builders Corp.	\$124,954,689	1,195	PFA	175,002	\$714	\$77,057,218	\$440	Design/Bid/Build	29-Aug-25	21-Oct-27			29%	\$53,974	0.043%	Site work activities include test geothermal drilling, underground utility installations including electrical, sanitary and work on the storm detention system. Building interior activities include steel detailing, concrete slab on deck placement, mechanical ductwork installation, metal framing, and interior masonry construction.	\$60,607,875	
Lawrence Francis M Leahy	Elementary School	J & J Contractors, Inc.	\$93,191,000	1,000	Bid	173,520	\$537	\$73,031,314	\$421	Design/Bid/Build	18-Sep-23	17-Jun-25	25-Aug-25	69 behind	99%	\$3,950,333	4.239%	Building interior activities include completion of outstanding punch list items, commissioning, owner training, and building turnover activities.	\$65,260,852	
Maynard Green Meadow	Elementary School	CTA Construction Managers, LLC	\$66,900,000	395	Bid	90,300	\$741	\$40,729,300	\$451	Design/Bid/Build	09-Apr-25	06-Aug-27			43%	\$703,312	1.051%	Site work activities include installation of underground utilities, granite curb installation, and placement of generator and exterior transformers. Building exterior activities include installation of brick veneer, air vapor barrier, and roof metal fascia installation. Building interior activities include ceramic wall tile installation, ceiling grid, drywall, and mechanical, electrical and plumbing rough-in work.	\$35,446,334	
Nauset Nauset Regional High	High School	Brait Builders Corp.	\$134,384,000	905	Bid	214,250	\$627	\$114,215,984	\$533	Design/Bid/Build	13-Jan-23	01-Oct-25			99%	\$7,708,544	5.736%	Site work activities include demolition of the modular classrooms. Interior building activities include completing miscellaneous punch list items.	\$43,635,295	
New Bedford John B Devalles	Elementary School	J & J Contractors, Inc.	\$96,578,877	760	PFA	124,160	\$778	\$64,585,149	\$520	Design/Bid/Build	06-Mar-25	23-Nov-26			36%	\$199,354	0.206%	Site work activities include the installation of underground utilities, foundations, and geothermal site work. Building exterior activities include roofing and façade construction. Building interior activities include the installation of mechanical rough-in work, insulation, drywall and metal stairs construction.	\$70,053,514	
Newton Countryside	Elementary School	CTA Construction Managers, LLC	\$60,315,100	465	Bid	76,000	\$794	\$35,706,700	\$470	Design/Bid/Build	04-Feb-25	31-May-27			42%	\$34,712	0.058%	Site activities include geothermal well drilling. Building exterior activities include exterior sheathing, air vapor barrier, brick veneer, roofing, and curtain wall installation. Building interior activities include the installation of insulation, mechanical, electrical, and plumbing rough-in work and metal framing.	\$20,214,455	
North Adams Greylock	Elementary School	Fontaine Brothers, Inc.	\$53,405,500	240	PFA	73,600	\$726	\$31,727,600	\$431	Design/Bid/Build	19-Feb-26	30-Jul-27			0%	\$0	0.000%	Site work activities include the installation of erosion control measures and mobilization.	\$41,557,218	
Randolph North Randolph Elementary	Elementary School	Agostini Construction Co., Inc.	\$42,461,700	315	Bid	74,720	\$568	\$31,038,338	\$415	Design/Bid/Build	01-Mar-23	28-Jul-24	29-Jul-24	1 behind	99%	\$1,591,959	3.749%	Punch list activities are ongoing and include the replacement of electrical components and correction to lighting controls.	\$31,274,899	
Scituate Hatherly Elementary	Elementary School	Brait Builders Corp.	\$94,922,834	460	PFA	106,084	\$895	\$56,090,666	\$529	Design/Bid/Build	3-Sep-25	01-Mar-27			20%	\$109,847	0.116%	Building exterior activities include steel erection and steel detailing, decking, waterproofing, rebar, storm trap, sewer installation, framing and vapor barrier.	\$35,134,823	
Swampscott Hadley	Elementary School	CTA Construction Co., Inc.	\$80,609,000	900	Bid	153,855	\$524	\$65,310,428	\$424	Design/Bid/Build	21-Nov-22	09-Aug-24	09-Aug-24		100%	\$3,261,377	4.046%	Construction is limited to photo voltaic panel installation.	\$39,040,332	
Watertown Watertown High	High School	Brait Builders Corp.	\$147,961,000	720	Bid	258,914	\$571	\$124,569,513	\$481	Design/Bid/Build	17-Jul-23	02-Mar-26			94%	\$6,224,398	4.207%	Site work activities include underground utility installations including geo-thermal wells. Building exterior activities include masonry and window installation. Building interior activities include installation of slab on deck, interior masonry, mechanical, electrical, plumbing, and finishes.	\$50,206,983	
Webster Bartlett High	High School	Brait Builders Corp.	\$77,065,000	445	Bid	161,436	\$477	\$58,833,760	\$364	Design/Bid/Build	31-Dec-24	17-Apr-26			79%	\$2,963,052	3.845%	Site work activities include the installation of new curbs and sidewalks. Building interior activities include mechanical, electrical, plumbing rough-in work and metal framing installation.	\$59,398,265	
Westfield Franklin Ave	Elementary School	Fontaine Brothers, Inc.	\$52,542,787	395	Bid	88,495	\$594	\$43,243,814	\$489	Design/Bid/Build	10-Apr-23	01-Nov-24	15-Nov-24	14 behind	99%	\$679,791	1.294%	Remaining site work activities include the completion of the playground and ball field.	\$35,619,128	
Whitman-Hanson Whitman Middle	Middle School	Fontaine Brothers, Inc.	\$91,899,792	675	Bid	138,605	\$663	\$67,281,186	\$485	Design/Bid/Build	27-Feb-25	03-May-27			44%	\$885,639	0.964%	Site work activities include underground utility connections. Building exterior activities include masonry, roofing, windows, and air vapor barrier system installation. Building interior activities include concrete stair placement, drywall, mechanical, electrical and plumbing rough-in work.	\$57,640,949	
Winchester Lynch Elementary	Elementary School	Brait Builders Corp.	\$68,216,500	520	Bid	103,523	\$659	\$52,165,555	\$504	Design/Bid/Build	06-Dec-23	02-Sep-25			99%	\$2,339,996	3.560%	Building work includes remaining punch list activities.	\$24,875,396	
Agawam Agawam High	High School	Fontaine Brothers, Inc.	\$186,951,887	955	PFA	232,725	\$803	\$111,179,181	\$478	CM-at-Risk	6-Jun-25	16-Jun-28			16%	\$0	0.000%	Site work activities include utility installation and underground electrical. Building exterior activities include roofing deck installation and penetrations, exterior metal framing and sheathing. Building interior activities include plumbing rough-in work and underground piping and light gauge metal framing.	\$96,854,000	
Andover West Elementary	Elementary School	Gilbane Building Company	\$136,311,316	925	Bid	191,028	\$714	\$90,186,163	\$472	CM-at-Risk	02-Jun-22	16-Aug-24	16-Aug-24		98%	(\$1,567,073)	-1.150%	Building exterior activities include site work and continue punch list of items. Building interior activities include punch list items.	\$45,078,165	
Arlington Arlington High	High School	Consigli Construction Company, Inc.	\$234,287,346	1,755	Bid	408,590	\$573	\$161,482,636	\$395	CM-at-Risk	09-Apr-19	14-Feb-25	14-Feb-25		99%	\$5,974,909	2.550%	Building Exterior activities include final punch list. Building Interior activities include punch list.	\$82,637,254	
Ashland David Mindess	Elementary School	Shawmut Design and Construction	\$68,794,041	635	Bid	104,885	\$656	\$43,006,840	\$410	CM-at-Risk	29-Nov-21	07-Aug-23	07-Aug-23		99%	\$2,238,405	3.254%	Site work activities include ongoing field repairs.	\$31,237,293	
Boston Carter Developmental Center	Middle/High School	Bond Brothers, Inc.	\$87,407,376	60	Bid	86,130	\$1,015	\$64,692,701	\$751	CM-at-Risk	29-Aug-22	20-Jun-25	25-Aug-25	66 behind	99%	\$3,596,654	4.115%	Building activities include punch list work.	\$29,493,112	
Boston Quincy Upper	Middle/High School	Turner Construction Company	\$177,600,000	650	Bid	178,024	\$998	\$127,763,779	\$718	CM-at-Risk	17-Jan-22	30-Aug-24	30-Aug-24		99%	\$2,001,702	1.127%	Building activities include punch list work and final testing.	\$60,649,603	
Brookline Pierce	K-8	Consigli Construction Company, Inc.	\$168,022,660	725	Bid	246,123	\$683	\$109,839,146	\$446	CM-at-Risk	10-Feb-25	29-Oct-27			29%	\$0	0.000%	Site work activities include geothermal well drilling. Building exterior activities include framing, masonry and underground utility installation. Building interior activities include temporary electrical and heating and spray fireproofing.	\$42,405,908	
Clinton Clinton Middle	Middle School	Fontaine Brothers, Inc.	\$114,295,892	700	PFA	136,000	\$840	\$65,470,730	\$481	CM-at-Risk	25-Aug-25	27-May-27			20%	\$0	0.000%	Site work activities include underground utility work. Building exterior activities include the installation of roof blocking and roofing materials. Building interior activities include slab-on-grade placement, the layout and installation of mechanical, electrical and plumbing hangers and mobilization to begin installation of spray-on fireproofing.	\$75,715,723	
East Longmeadow East Longmeadow High	High School	Fontaine Brothers, Inc.	\$147,537,913	800	PFA	191,796	\$769	\$88,489,367	\$461	CM-at-Risk	04-Nov-24	30-Jul-26			52%	\$1,204,629	0.817%	Site work activities include installing electrical and security connections to the press box at the athletic fields. Building exterior activities include ongoing masonry, metal panel and window installation. Building interior activities include framing, mechanical, electrical and plumbing installation, painting, casework and flooring installation.	\$80,967,085	
Greater Fall River Regional Voc Tech Diman Regional Voc Tech High	Vocational/Technical	Suffolk Construction Company	\$240,514,943	1,500	Bid	394,650	\$609	\$164,163,713	\$416	CM-at-Risk	30-Oct-23	01-Jul-26			71%	\$5,045,675	2.115%	Building exterior activities include weather protection. Building interior activities include drywall and taping, painting, ceramic tile, ceiling grid, plumbing work, fire protection piping, ductwork, and electrical work.	\$162,785,640	
Lawrence Henry K Oliver	K-8	Consigli Construction Company, Inc.	\$117,148,369	1,000	Bid	162,000	\$723	\$78,650,504	\$485	CM-at-Risk	12-Jan-22	10-Jun-25	10-Jun-25		99%	(\$1,340,224)	-1.144%	Building interior activities include the completion of change order work and commissioning activities.	\$69,753,224	

**Projects in Construction
MSBA Grant Basis and Maximum Grant Amount
Data Reported as of March 19, 2026**

Core Program and Waitlist Totals			\$6,343,700,952																*Includes Alternates	\$3,244,201,877
Project	Grade	Contractor	Total Construction Cost*	Projected Enrollment	PFA or Bid Data	SD Gross Sq.Ft.	Construction Cost/Sq.Ft.	Building Cost	Building Cost/Sq.Ft.	Procurement Type	Construction Start Date	Substantial Completion Date *	Building Construction Complete **	Schedule Variance (days) ***	Physical Progress	Change Orders	Change Orders %	Construction Status	Est Max Total Facilities Grant	
CAPITAL PIPELINE PROJECTS IN CONSTRUCTION																				
Core Program Totals			\$6,343,700,952																	\$3,244,201,877
Lowell Lowell High	High School	Suffolk Construction Company	\$305,210,277	3,520	Bid	622,777	\$490	\$232,731,186	\$374	CM-at-Risk	02-Mar-21	04-May-26			85%	\$21,578,103	7.070%	Site work activities include the installation of sidewalks and drainage Building exterior activities include masonry work. Building interior activities include the installation of stairs, elevator, terrazzo, drywall, millwork, fireproofing, mechanical, plumbing, electrical, finishes, commissioning and punch list items.	\$246,994,495	
Lynn Pickering Middle	Middle School	Consigli Construction Company, Inc.	\$133,993,738	1,100	PFA	183,084	\$732	\$86,767,276	\$474	CM-at-Risk	26-Jun-24	03-Dec-27			32%	\$0	0.000%	Site work activities include excavation for the generator power conduit. Building exterior activities include rebar installation at the elevated slabs and pouring the Level 2 and 3 slabs. Building interior activities include the installation of underground plumbing and electrical conduit for interior utilities and backfill.	\$102,922,982	
Nashoba Nashoba Regional	High School	Consigli Construction Company, Inc.	\$199,134,701	925	PFA	209,529	\$950	\$111,318,868	\$531	CM-at-Risk	27-Aug-24	13-Aug-27			36%	\$24,768	0.012%	Building exterior activities include the installation of storefront and windows, stone facade and metal panels. Building interior activities include wall framing and drywall, overhead installation and rough-in of electrical, mechanical, and plumbing systems, continuation of spray-on fireproofing, firestopping, and the installation of door frames and ceiling grids.	\$78,086,529	
Northeast Metropolitan Regional Voc Tech Northeast Metro Reg Voc	Vocational/Technical	Gilbane Building Company	\$243,591,092	1,600	Bid	386,630	\$630	\$135,512,106	\$350	CM-at-Risk	25-Oct-23	29-May-26			64%	\$3,548,074	1.457%	Site work activities include the excavation and installation of conduits within roadways. Building exterior activities include the installation of exterior panels, and piping insulation for rooftop units. Building interior activities include painting, rough-ins for mechanical, electrical, and plumbing, and installation of gym equipment, ceiling grids, flooring, millwork, and interior finishes.	\$159,916,302	
Norwood Dr. Philip O. Coakley Middle	Middle School	W. T. Rich Company Inc.	\$115,583,497	1,070	Bid	187,840	\$615	\$82,173,201	\$437	CM-at-Risk	08-Jun-23	18-Aug-25	25-Aug-25	7 behind	99%	\$3,342,666	2.892%	Building exterior and interior activities include punch list work.	\$51,946,704	
Quincy Squantum	Elementary School	Lee Kennedy	\$81,196,053	380	PFA	79,801	\$1,017	\$47,257,239	\$592	CM-at-Risk	6-Nov-25	22-Apr-27			0%	\$0	0.000%	Site work activities include excavating foundations, installing rebar, pouring concrete foundations, and applying vapor barrier.	\$38,346,953	
Somerset Somerset Middle	Middle School	Brait Builders Corp.	\$69,674,235	590	Bid	124,200	\$561	\$52,152,647	\$420	CM-at-Risk	22-Dec-22	16-Aug-24	16-Aug-24		99%	\$7,092,638	10.286%	Building exterior and interior activities include punch list and warranty work.	\$37,691,050	
Spencer-E Brookfield David Prouty High	High School	Fontaine Brothers, Inc.	\$91,183,005	305	Bid	126,823	\$719	\$60,077,984	\$474	CM-at-Risk	26-Jun-23	14-Aug-26			84%	\$6,079,177	6.665%	Building exterior activities include the installation of exterior framing, insulated concrete form walls, and roofing. Building interior activities include the installation of concrete slabs, masonry walls, manufactured wood beams, and mechanical, electrical and plumbing rough-in work.	\$50,710,082	
Stoneham Stoneham High	High School	Consigli Construction Company, Inc.	\$175,983,887	695	Bid	207,077	\$850	\$115,602,780	\$558	CM-at-Risk	13-Oct-22	31-Jul-24			96%	\$6,197,208	3.522%	Building exterior and interior activities include completing punch list items.	\$55,306,745	
Tri County Tri County Reg Voc Tech	Vocational/Technical	Consigli Construction Company, Inc.	\$233,267,235	1,000	PFA	281,500	\$829	\$134,356,081	\$477	CM-at-Risk	08-Jan-25	14-Jul-27			31%	\$0	0.000%	Building exterior activities include the installation of the courtyard air vapor barrier, roofing, and underground utilities. Building interior activities include interior wall framing, drywall installation, drywall taping, mechanical, electrical and plumbing rough-in work and variable refrigerant flow system installation.	\$100,797,738	
Tyngsborough Tyngsborough Middle	Middle School	Fontaine Brothers, Inc.	\$70,775,071	480	Bid	112,784	\$628	\$49,672,857	\$440	CM-at-Risk	06-Jan-23	15-May-25	25-Jul-25	70 behind	99%	\$1,423,574	2.165%	Building exterior and interior activities include completing punch list and resolving commissioning items.	\$32,677,983	
Wakefield Wakefield Memorial High	High School	Bond Building Construction, Inc.	\$223,897,740	1,000	Bid	259,847	\$862	\$145,417,589	\$560	CM-at-Risk	18-Mar-24	03-Dec-26			64%	\$0	0.000%	Site work activities include site grading. Building exterior activities include masonry and window and curtain wall installation. Building interior activities include metal framing, drywall, painting, tiling, ceiling grid installation, sunshade installation, casework, ductwork, heating, ventilation and air conditioning installations, rough-in electrical and installation of electrical finishes.	\$78,203,281	
Walpole Bird Middle	Middle School	Fontaine Brothers, Inc.	\$92,568,764	905	Bid	162,193	\$571	\$66,906,015	\$413	CM-at-Risk	26-Oct-22	16-Jul-24	16-Jul-24		99%	\$2,597,731	2.805%	Site work activities include completing site punch list and remediation work at drainage basin.	\$42,245,529	
Waltham Waltham Sr High	High School	Consigli Construction Company, Inc.	\$298,923,790	1,830	Bid	414,854	\$721	\$192,973,827	\$465	CM-at-Risk	03-Jun-21	24-May-24	16-Aug-24	84 behind	99%	\$9,733,457	3.256%	Building interior activities include completing adjustments to the heating, ventilation and air conditioning systems, hot water system, audio systems and warranty work.	\$118,207,106	
Westport Westport Middle-High	Middle/High School	Agostini Construction Co., Inc.	\$77,976,264	860	Bid	187,100	\$417	\$53,720,577	\$287	CM-at-Risk	15-Oct-18	30-Aug-21	02-Sep-21	3 behind	99%	\$3,486,378	4.471%	Building exterior activities include resolving building envelope issues. Building interior activities include resolving commissioning items.	\$37,591,857	

Substantial Completion Date *
* Contract Substantial Completion Date. Field will remain blank until a contract/GMP has been executed.

Building Construction Complete **
** Field represents actual Substantial Completion date (date of Certificate of Completion).

Variance***
*** Variance is the difference between "Building Construction Completion" date and "Substantial Completion" Date. The number zero (0) will appear in this column until actual certificate of Substantial Completion is achieved.