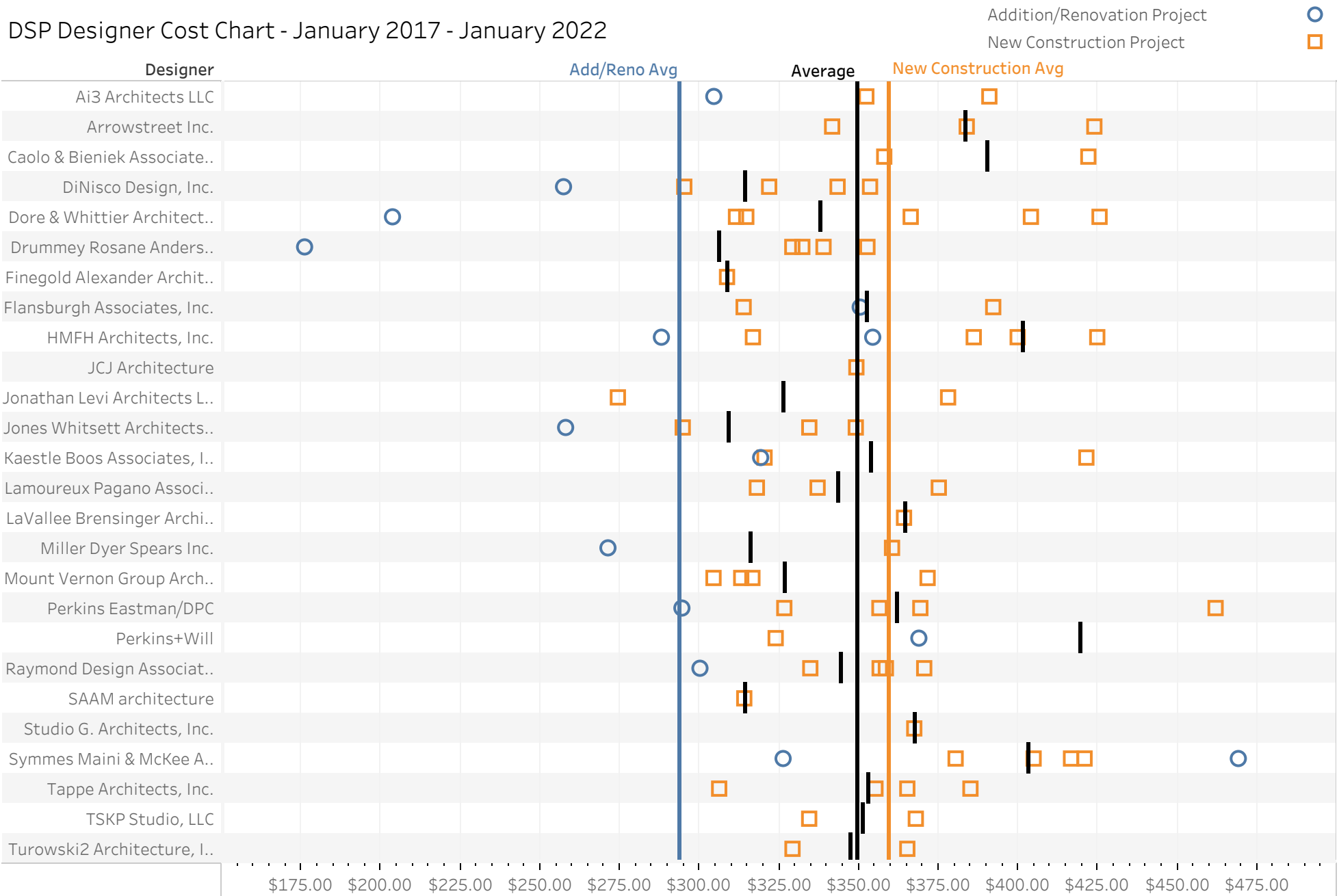


# DSP Designer Cost Chart - January 2017 - January 2022



This chart includes projects approved by the MSBA Board of Directors between January 2017 and January 2022 and is based on reconciled construction budgets submitted by districts at the conclusion of schematic design.

The direct construction costs per square foot above includes estimated direct building costs plus the applicable portion of the design and pricing contingency. The following is not included in the direct building cost: Special Construction, demolition, hazardous materials abatement, sitework, subcontractor bonds, insurance, general conditions, overhead and profit, GMP fee, GMP contingency, escalation to mid-point of construction, and alternates, if applicable.

The black line associated with each designer represents the average direct building cost for MSBA approved projects between January 2017 and January 2022 for that designer.

The direct building cost for two projects, the Boston Josiah Quincy Upper School by HMFH and Boston Carter School by Perkins + Will, are not shown as their direct building cost is greater than \$500/sf.