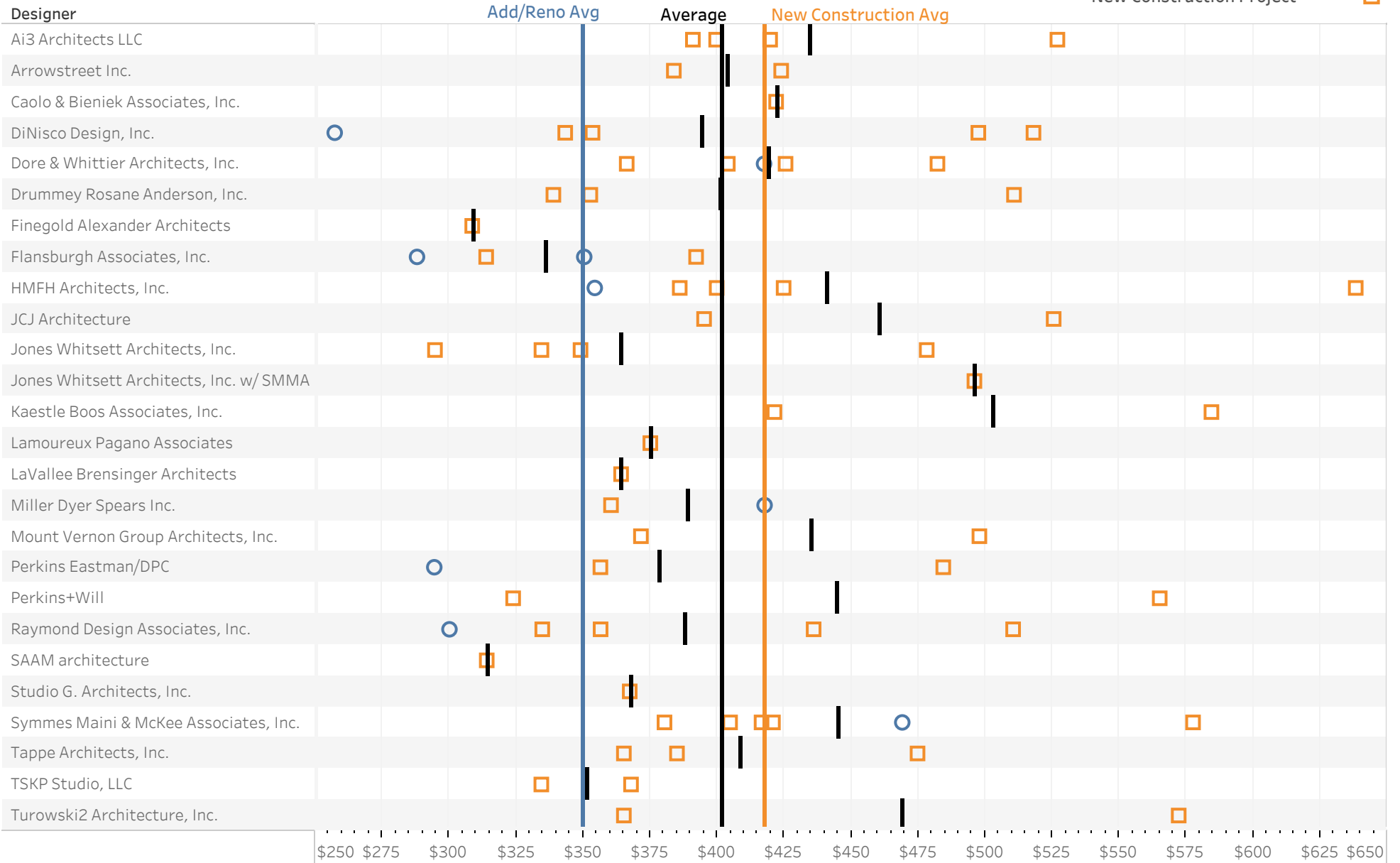


# DSP Designer Cost Chart - January 2019 - December 2023

Project Scope  
All

Year of PS&B Date  
All

Addition/Renovation Project ○  
New Construction Project □



This chart includes projects approved by the MSBA Board of Directors between January 1, 2019 and December 31, 2023 and is based on reconciled construction budgets submitted by districts at the conclusion of schematic design. The direct construction costs per square foot above includes estimated direct building costs plus the applicable portion of the design and pricing contingency. The following is not included in the direct building cost: Special Construction, demolition, hazardous materials abatement, sitework, subcontractor bonds, insurance, general conditions, overhead and profit, GMP fee, GMP contingency, escalation to mid-point of construction, and alternates, if applicable.

The black line associated with each designer represents the average direct building cost for MSBA approved projects between January 2019 and December 2023 for that designer.