



The Needs Survey

Statewide School Facilities and Findings



Buildings and Square Footage

- There are 1,757 schools, composed of 1,831 school-related permanent buildings and totaling 173,366,462 GSF.
 - 60 fewer schools than in 2005
- The schools serve 927,252 students in 329 school districts
 - An additional 28,311 students are enrolled in schools that are not eligible for MSBA funding
- About 1% of the state's 62,397 classrooms are in temporary spaces



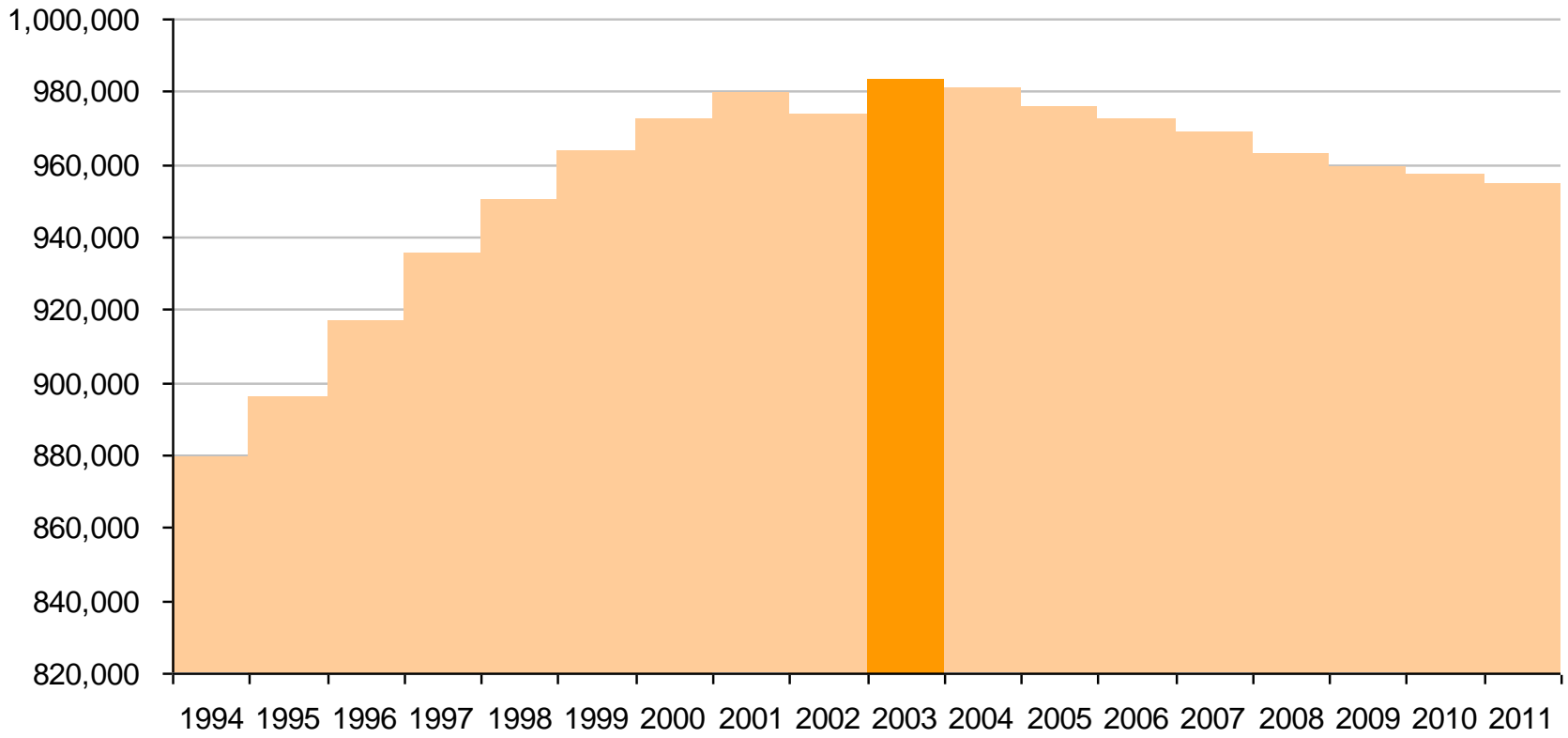
Enrollment

- Enrollment declined by 2.8% statewide from its peak in 2003
- No region of the state has been unaffected
- MSBA and DESE predict that enrollment will continue to decline for the near future
- More than 80 public schools have closed since the 2005 Needs Survey
 - 7 have closed since the Needs Survey visits were concluded in July 2010
 - Districts cited lack of enrollment as a factor in 50% of closings
- Approximately 150 buildings are no longer being used as public schools



Massachusetts K-12 Enrollment

Student Enrollment by Year

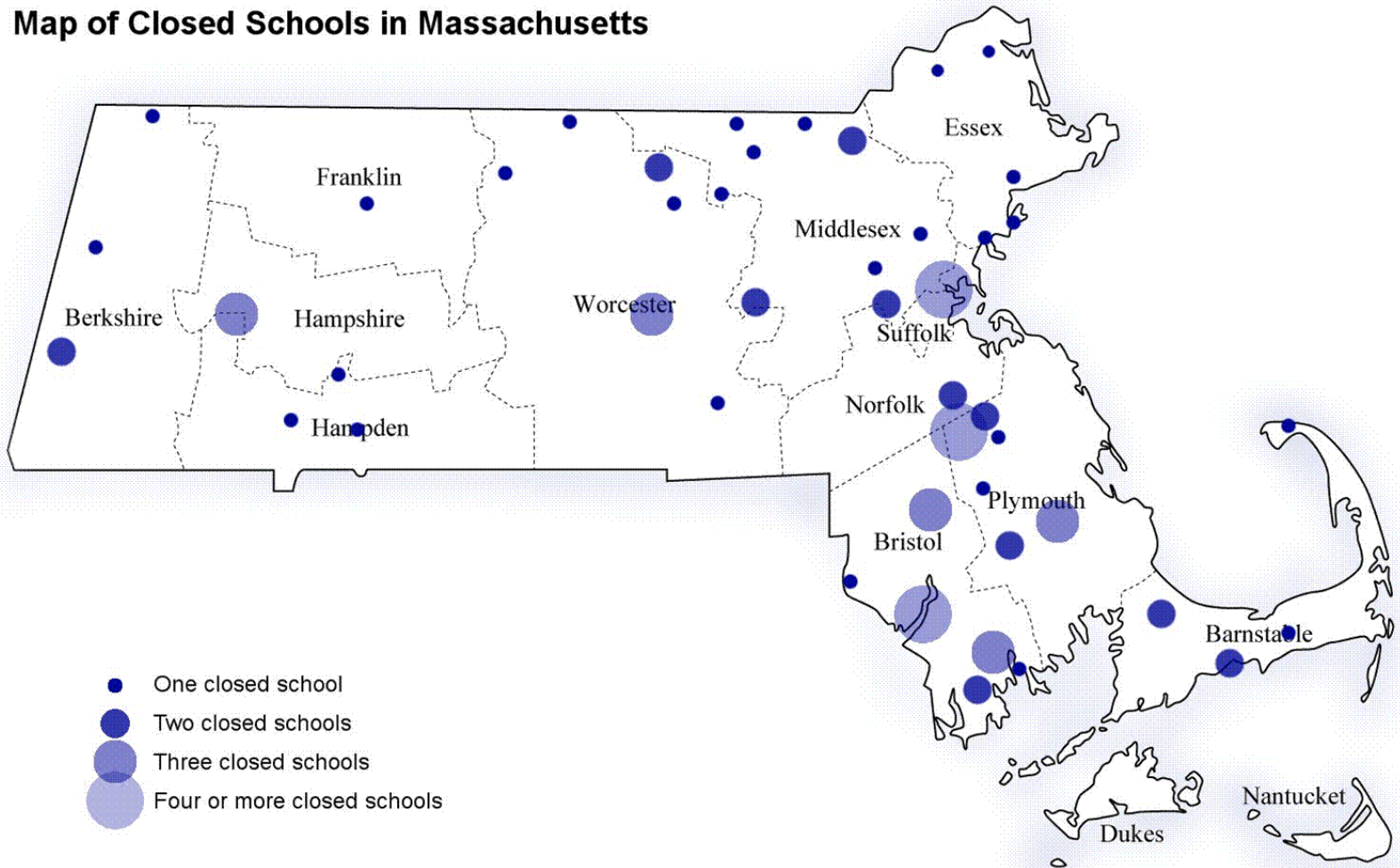


* 2003 was the peak enrollment year.



Enrollment – Closed Schools

Map of Closed Schools in Massachusetts



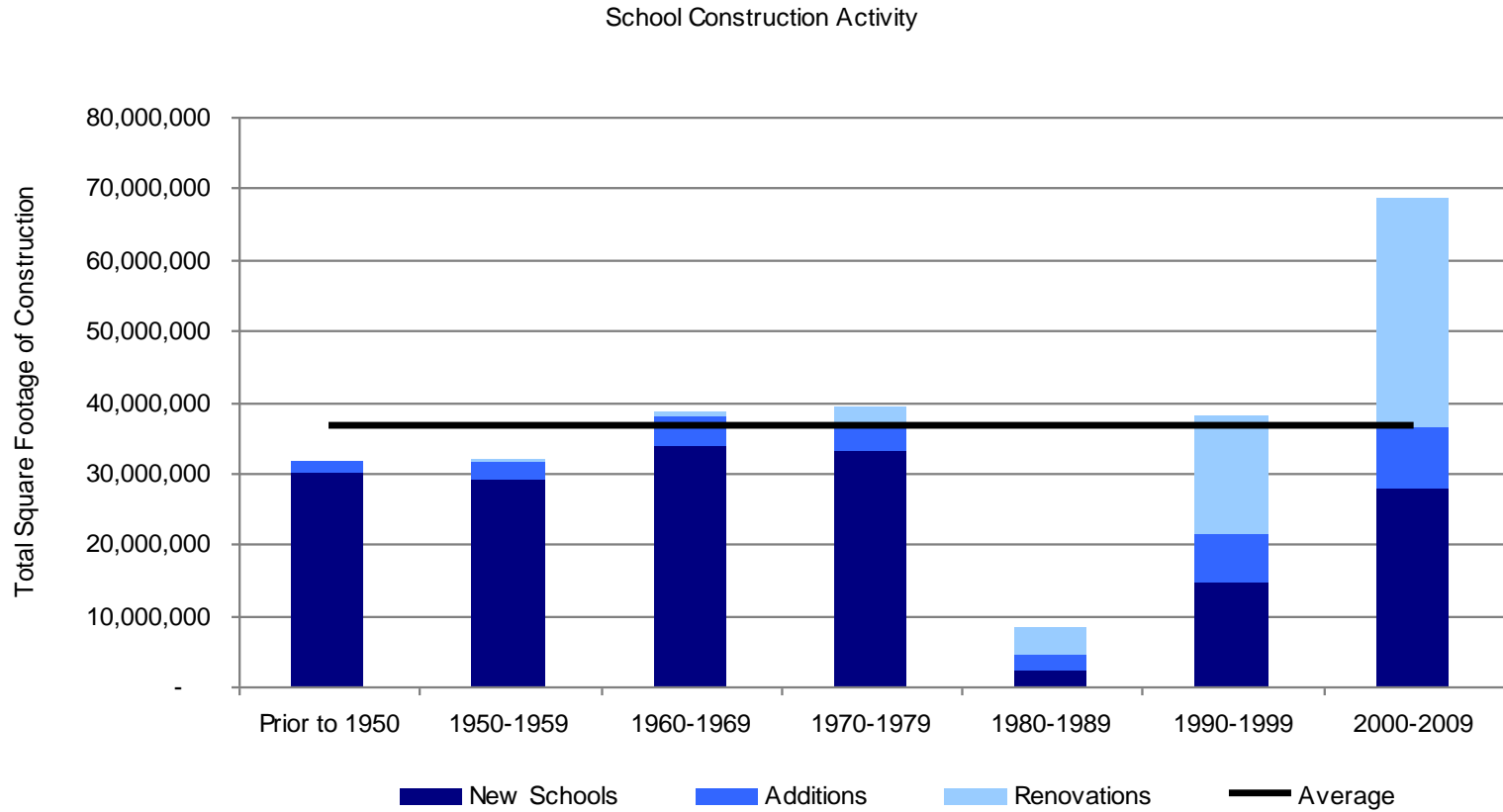


School Construction Boom

- Between 2000 and 2010, nearly 70 million GSF of school facility space was built new or renovated.
- About 40% of school GSF has been built new or renovated since 2000
- Includes projects funded under the former school building assistance program and new projects in the MSBA Capital Pipeline



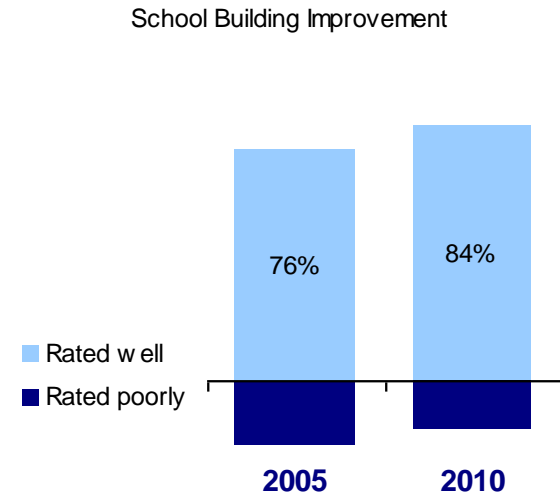
Construction Activity by Decade





Summary of Conditions

- Massachusetts school facilities are generally in good condition and provide a good physical environment for learning.
- **84%** received top scores for building conditions
- **97%** received top scores for general physical environment
- **92%** have adequate space to support their educational program and enrollment

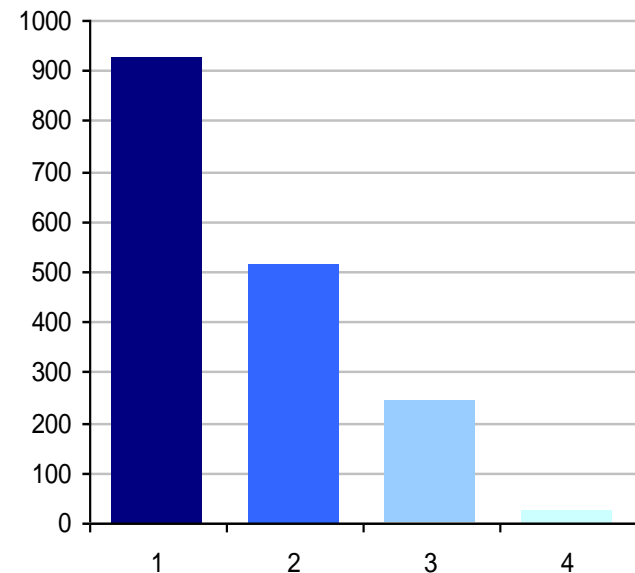




Buildings Systems - Findings

- 84.3% of public schools received a rating of 1 or 2, meaning that their site and building systems are in generally good condition.
- Less than 1.5%, 23 schools, received a rating of 4, meaning that they are in poor condition.

Number of Schools with each Building Systems Condition Score

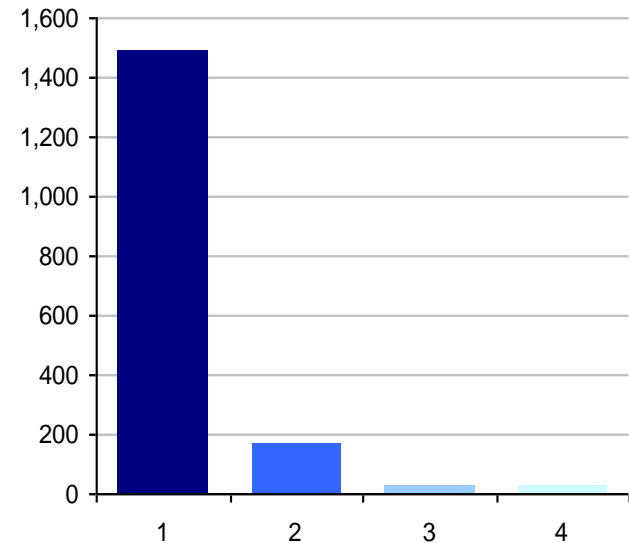




General Environment - Findings

- 97% of schools received a rating of 1 or 2, meaning that the school has a generally good environment for learning and teaching
- Only 1.5%, 27 schools, have a rating of 4, while 30 schools received a 3

Number of Schools with each General Environment Score





Space Utilization - Findings

- Nearly 24% of schools are oversized for their current enrollment and educational program
- Less than 8.0% of schools may be inadequately sized

Capacity Rating: Number of Schools with Each Score

